



Birmingham Research Unit

Communicable and Respiratory Disease Report for England and Wales

Key Statistics:

Week Number/Year..... 50/2006
Week Starting – Ending.....11/12/06-17/12/06
No. of Practices.....92
No. of Doctors.....520
Population.....856302

Key Messages:

National (England & Wales)

- **Common cold:** increased from **157.9** in week 49 to **167.1** in week 50.
- **Influenza-like illness:** decreased from **10.1** in week 49 to **8.1** in week 50.
- **Respiratory system diseases:** increased from **430.2** in week 49 to **451.8** in week 50.
- **Upper respiratory tract infections:** increased from **288.3** in week 49 to **306.6** in week 50.

Regional (North, Central and South)

- **Common cold:** increased in the North from **141.6** in week 49 to **159.2** in week 50 and increased in the South from **164.6** in week 49 to **190.2** in week 50.
- **Respiratory system disease:** increased in the South from **415.3** in week 49 to **482.8** in week 50.
- **Upper respiratory tract infections:** increased in the South from **290.6** in week 49 to **343.0** in week 50.

Comments:

Acute bronchitis has increased over the last few weeks in the <1 year age group but this is within expected seasonal levels.

Winter Focus 2006/2007:

During the winter (weeks 40 to 20) a special focus on influenza-like illness and acute bronchitis is provided below. Each weekly incidence rate is presented per 100,000 population. All presentations are for males and females in all age groups unless otherwise stated.

Weekly influenza and influenza-like illness incidence rates per 100,000 persons

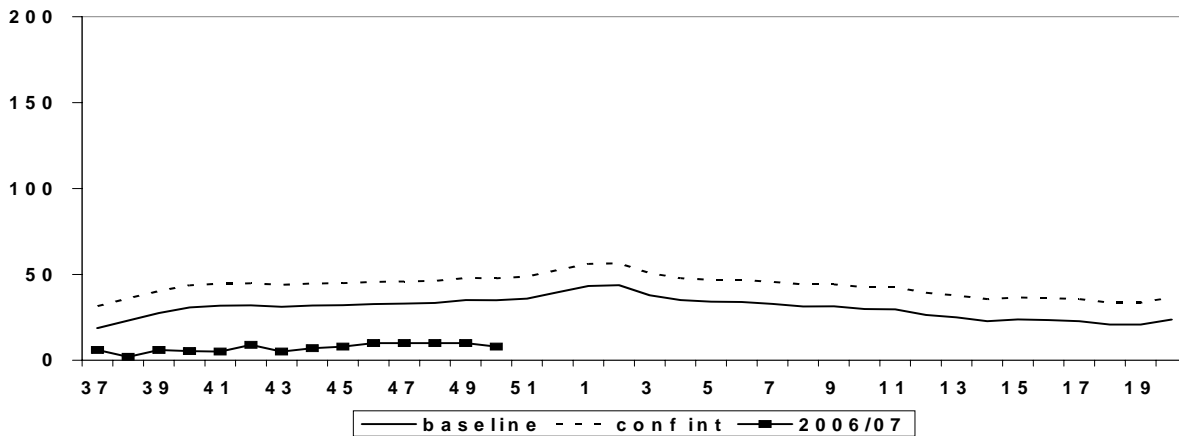
All Regions

	Influenza-like illness	Bronchitis
0-4	2.10	373.38
5-14	3.88	54.38
15-44	11.79	66.51
45-64	5.96	103.15
65+	6.86	219.52
All Ages	8.06	114.91

Regional

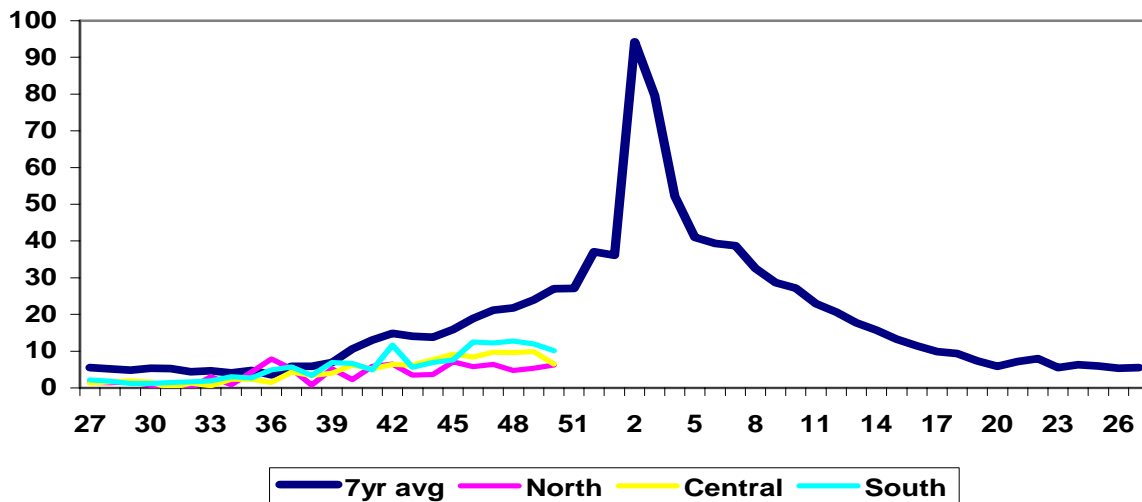
North	6.24
Central	6.54
South	10.14

(A) Influenza-like illness: national incidence rate*

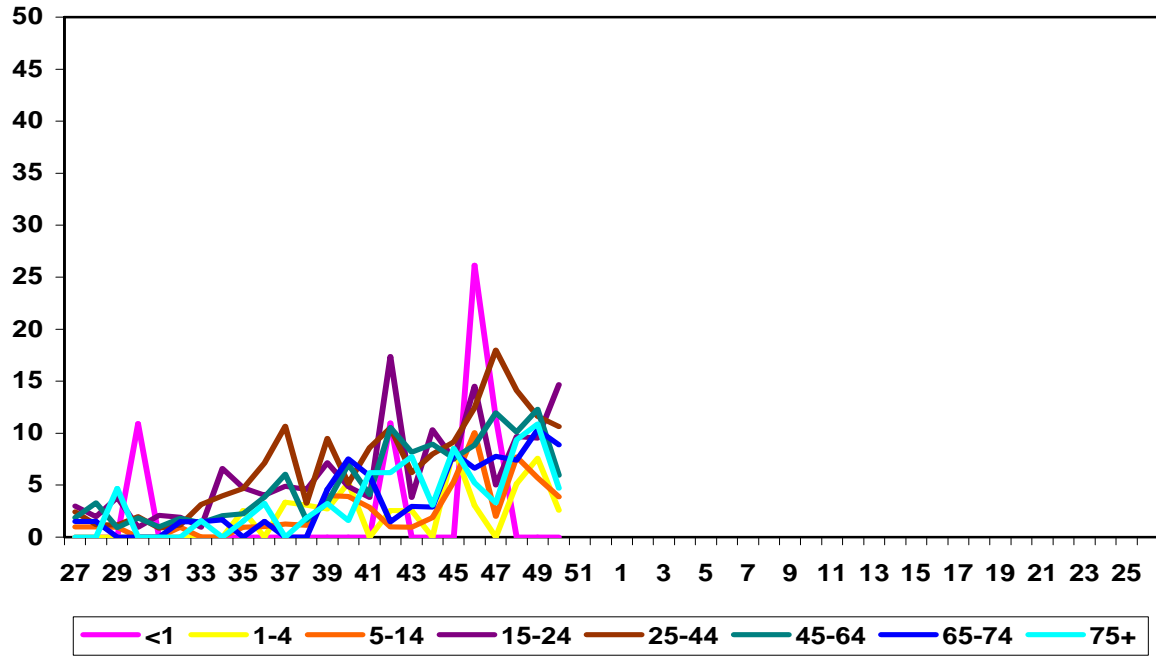


*The incidence rate is plotted against a background of the average influenza incidence during periods when influenza has not been prevalent over the last ten winters. The baseline is presented as a moving average with an upper limit of 2 standard deviations above. Incidence data for the winter of 2006/07 are superimposed. Rates less than 30 are commonplace in winter; between 30 and 100 are usual when influenza viruses are circulating; rates exceeding 100 represent above average influenza activity and above 200 are exceptional.

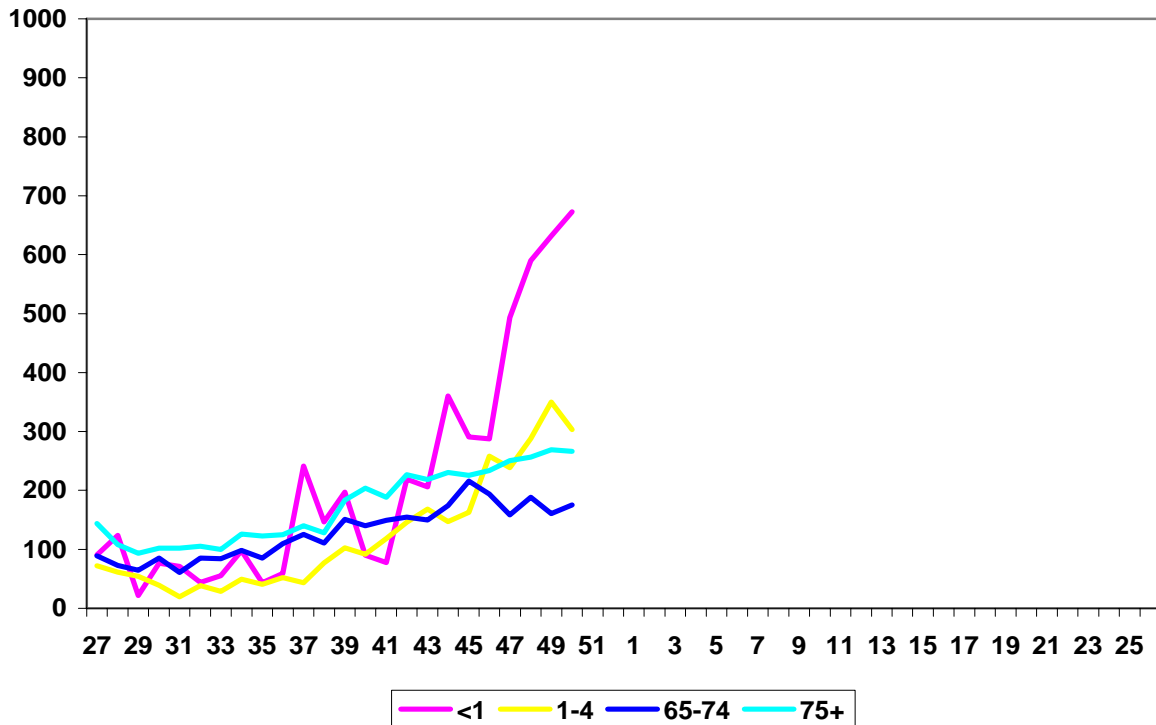
(B) Influenza-like illness: regional incidence rate against 7 year average



(C) Influenza-like illness: national incidence by age group

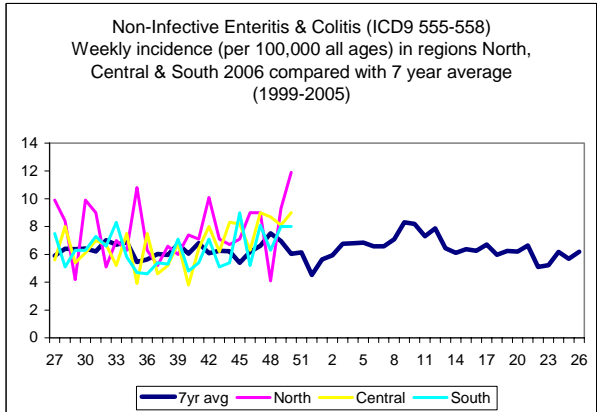
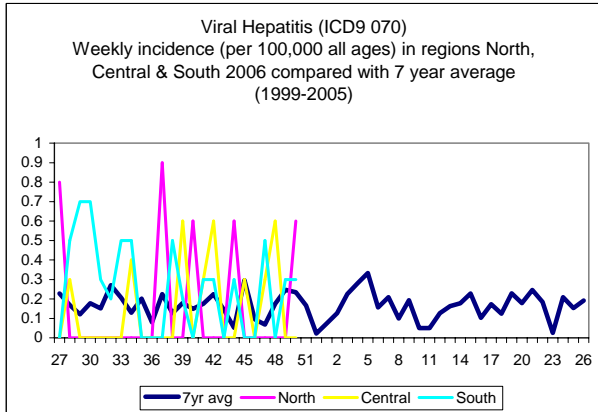
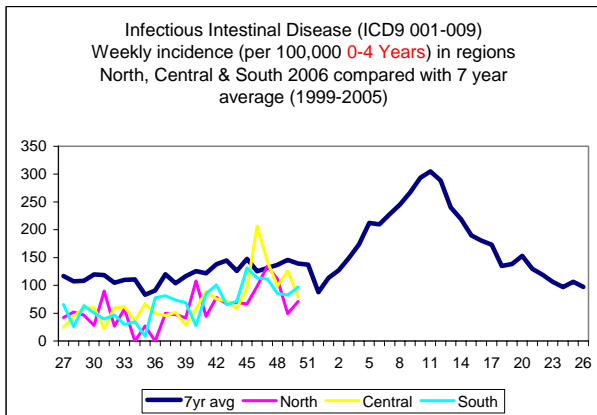
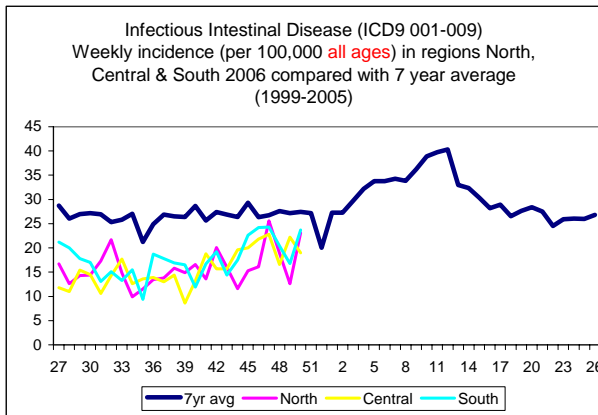


(D) Acute Bronchitis: national incidence in the young and elderly populations

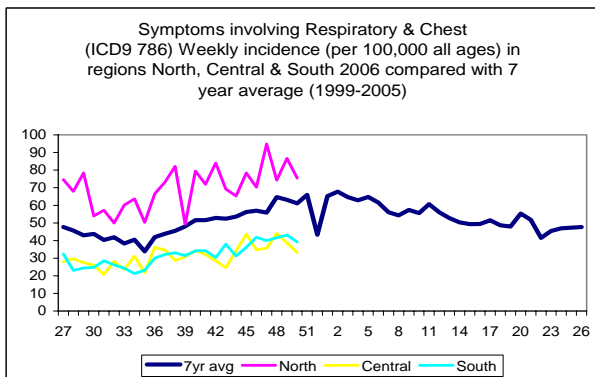
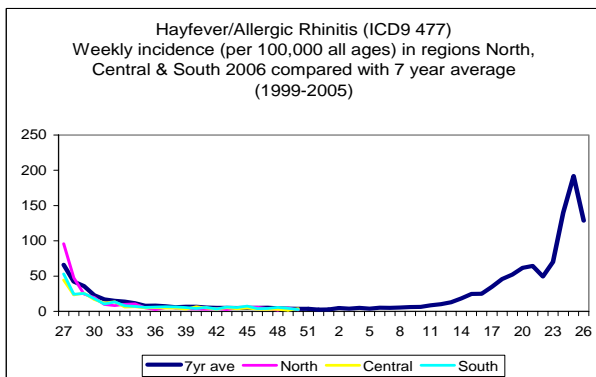
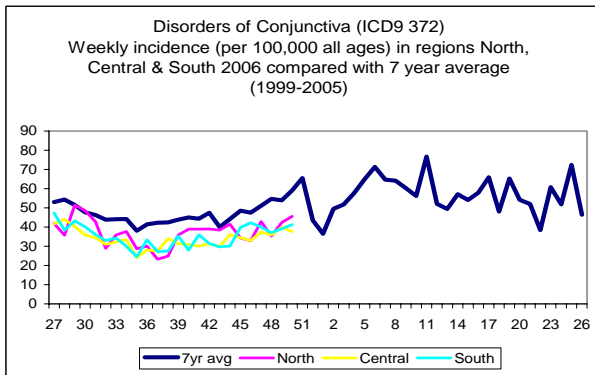
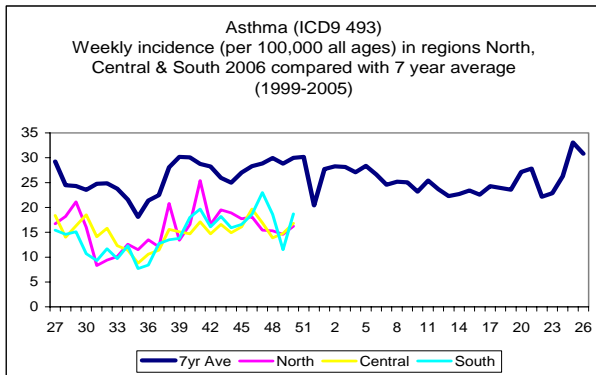


Weekly incidence data collected in the WRS (Weekly Returns Service) are presented for each disease set against the background National weekly average over the previous 7 years (1999-2005). Data are available for 3 supra-regional groupings; North, Central and South. All presentations are for males and females in all age groups unless otherwise stated.

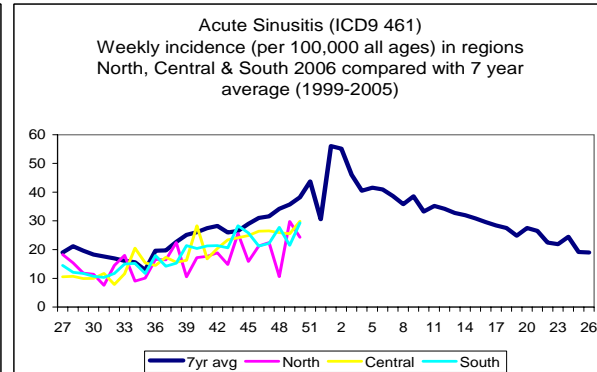
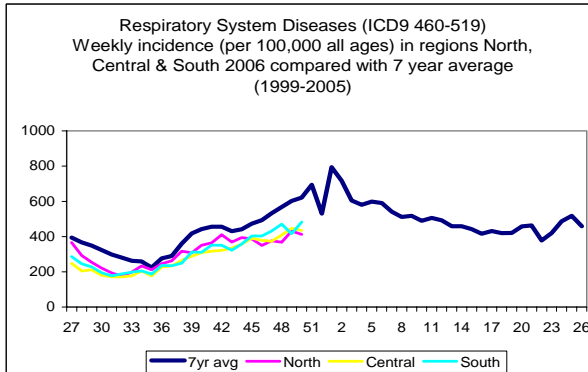
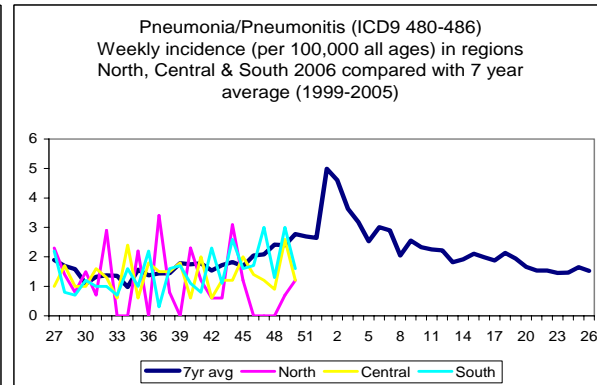
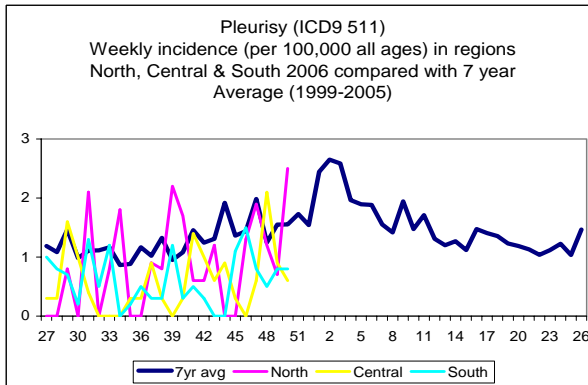
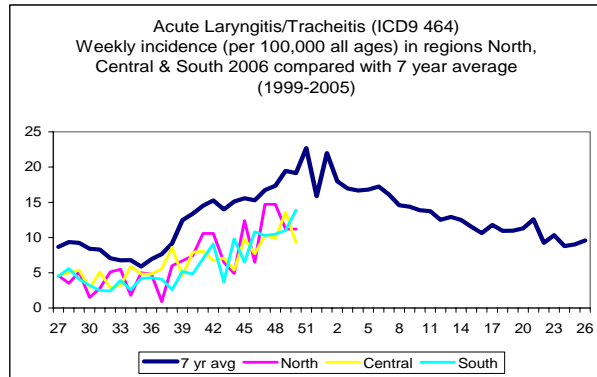
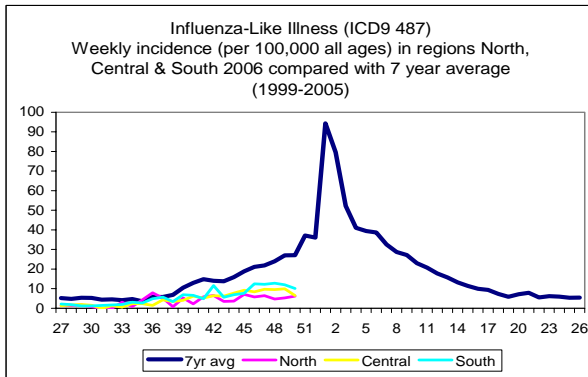
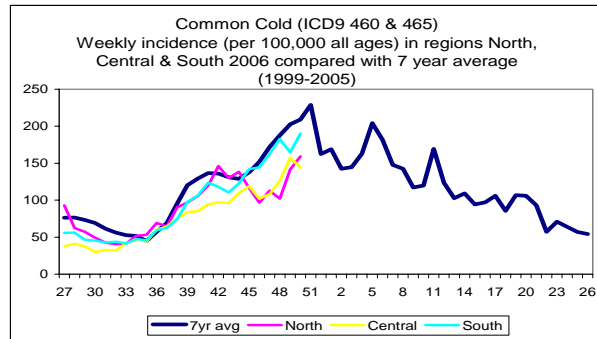
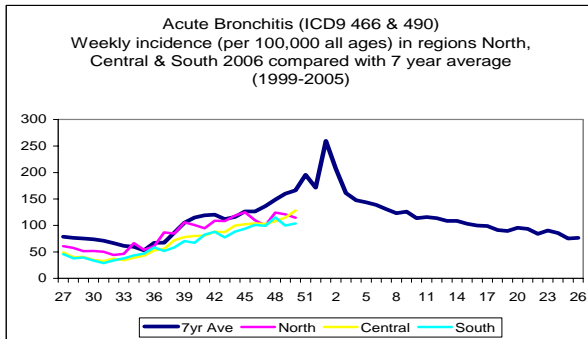
1. Water & Food Borne Disorders:



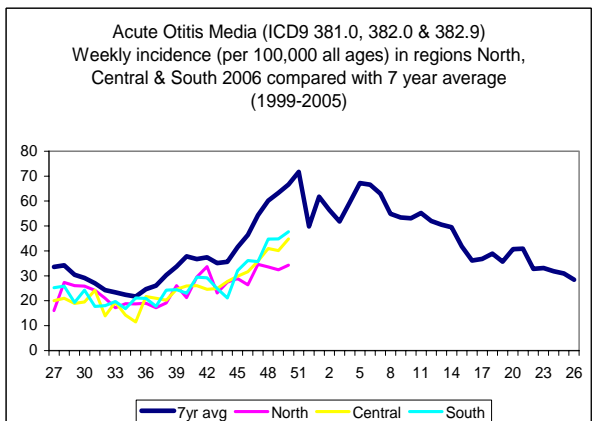
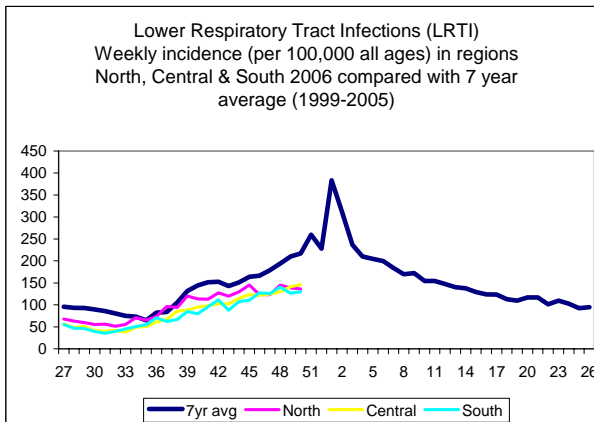
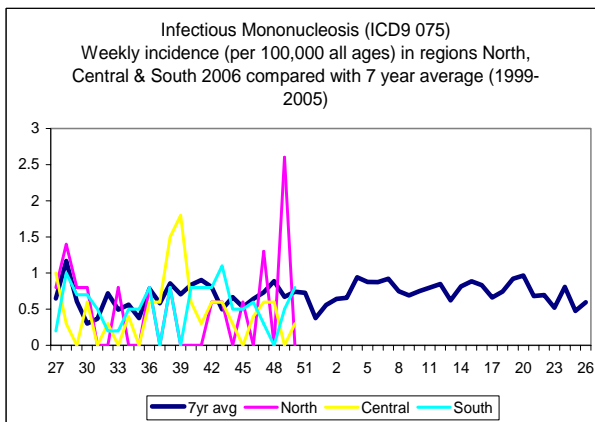
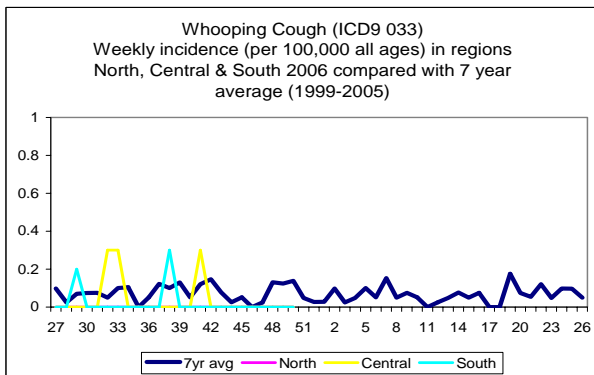
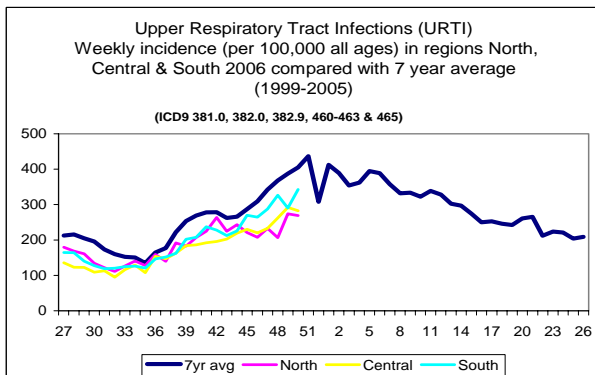
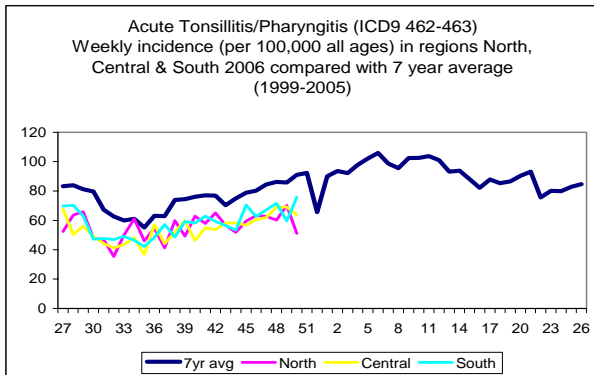
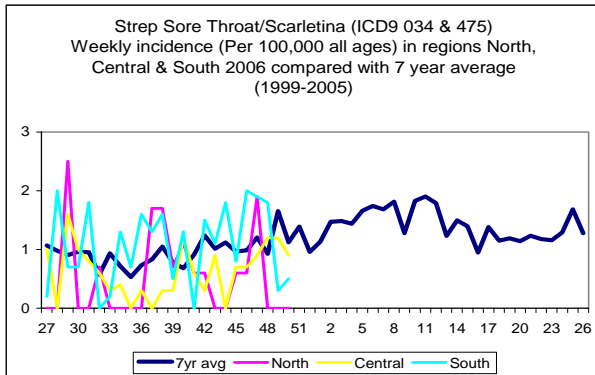
2. Environmentally Sensitive Disorders:



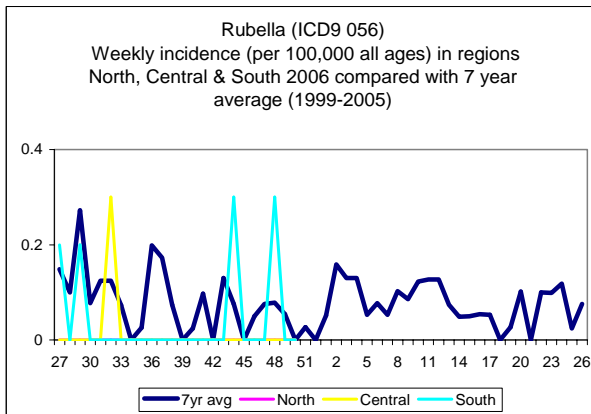
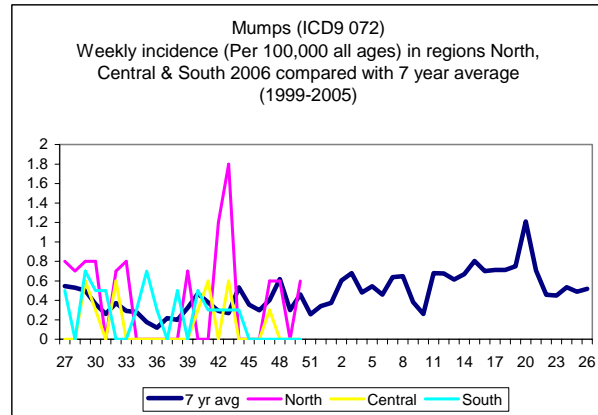
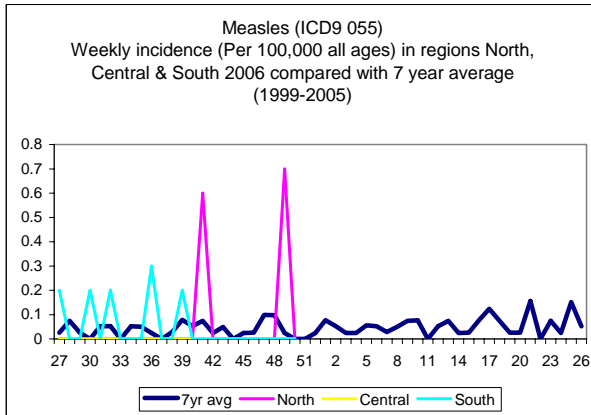
3. Respiratory Infections:



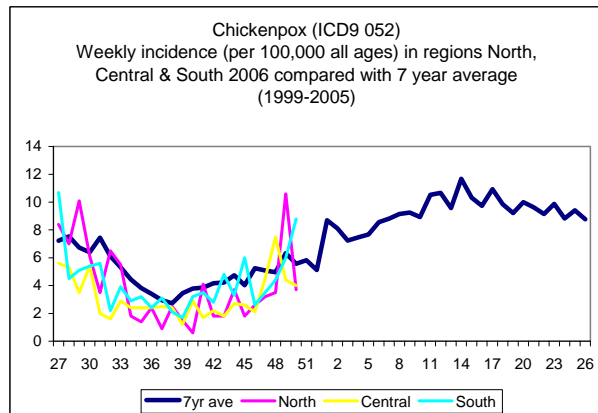
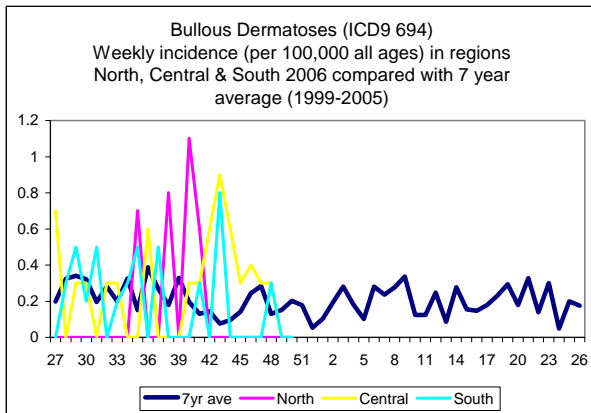
Respiratory Infections (continued):



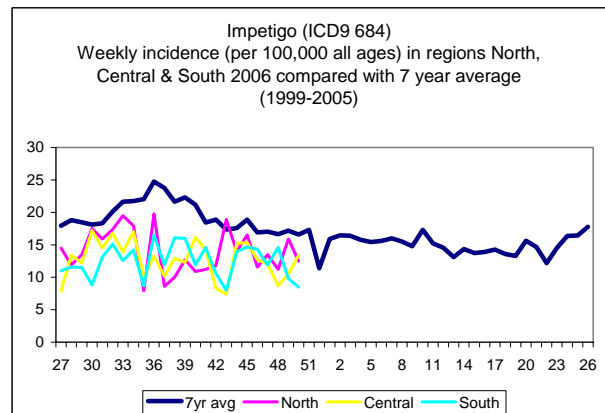
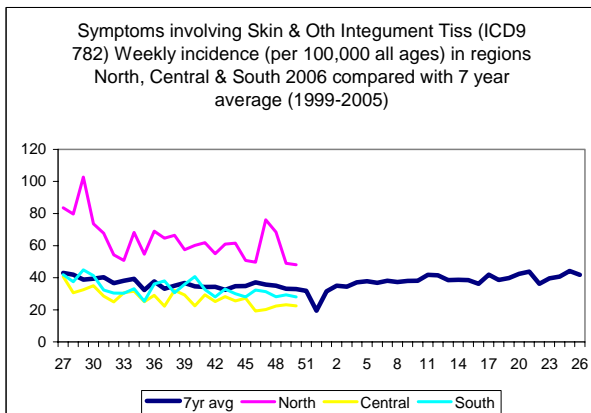
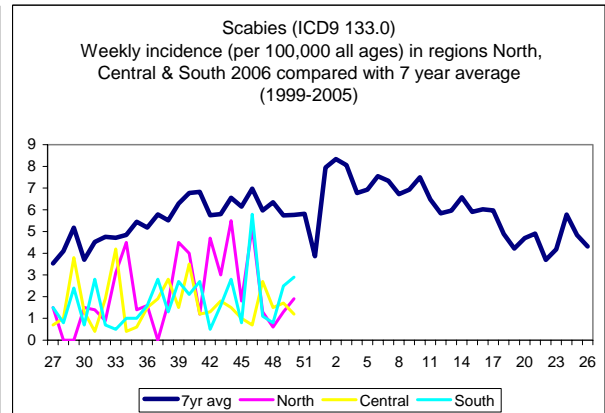
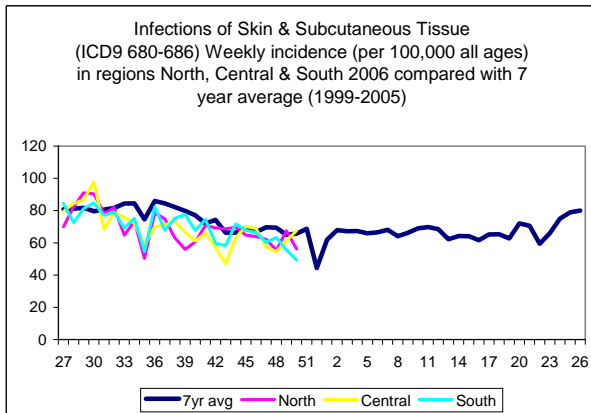
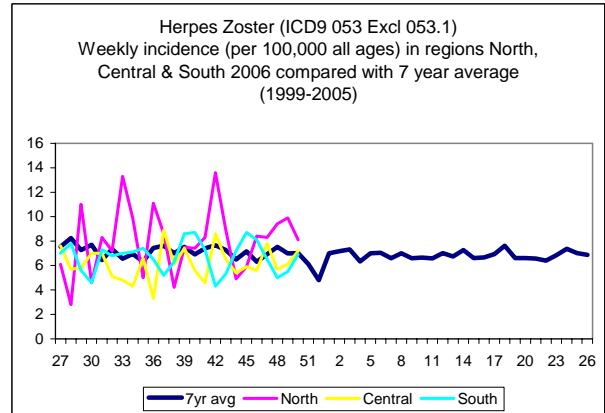
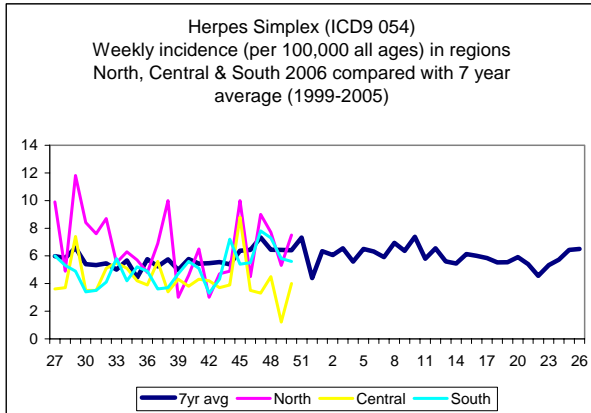
4. Vaccine Sensitive Disorders:



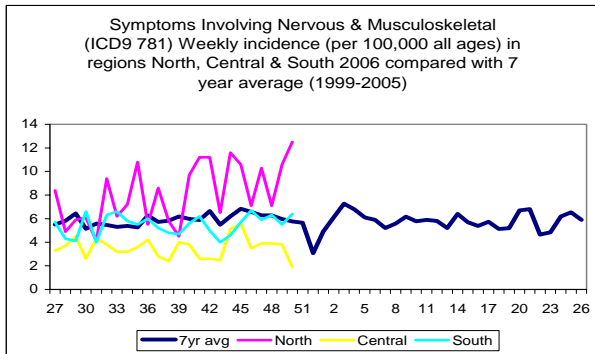
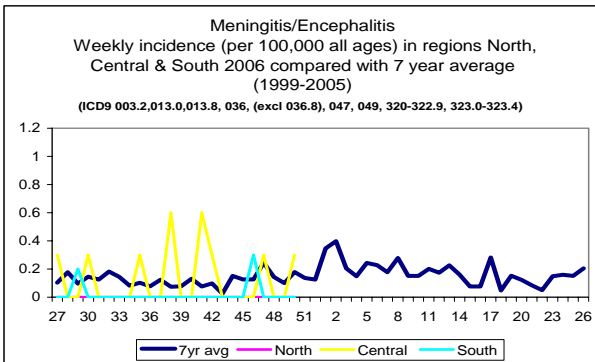
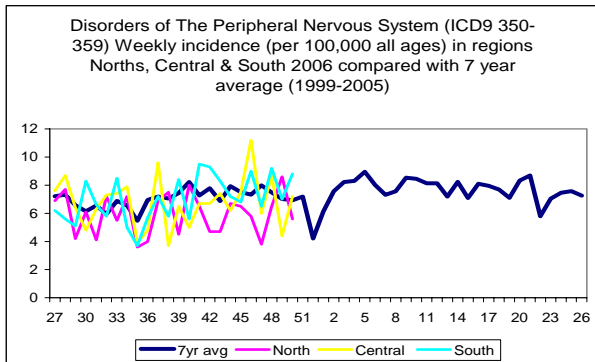
5. Skin Contagions:



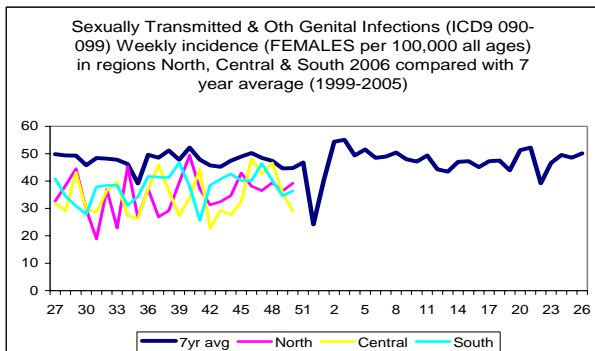
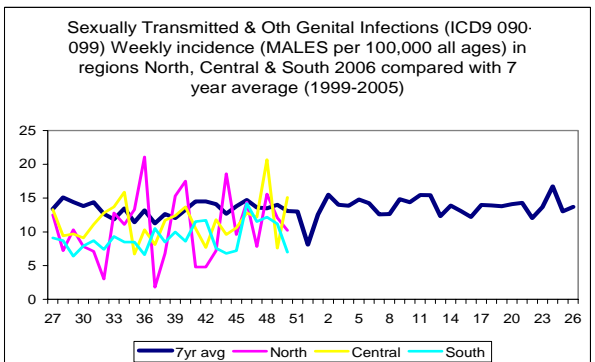
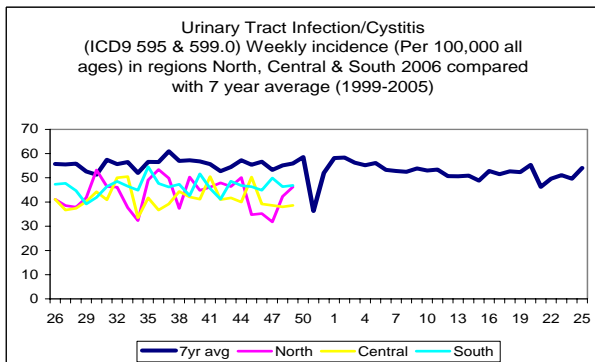
Skin Contagions (continued):



6. Disorders Affecting the Nervous System:



7. Genitourinary System Disorders:



8. Tabular Summary by Disease:

Week Beginning Ending	11/12/06 - 17/12/06 (provisional)		04/12/06 - 10/12/06		27/11/06 - 03/12/06		20/11/06 - 26/11/06	
	Rate:	Eps:	Rate:	Eps:	Rate:	Eps:	Rate:	Eps:
Allergic Rhinitis (477)	2.9	25	3.4	30	3.8	34	3.6	31
Asthma (493)	17.5	150	13.3	119	16.0	143	19.1	165
Bronchitis (466 & 490)	114.9	984	109.2	977	113.5	1012	100.0	865
Bullous Dermatoses (694)	0.0	0	0.0	0	0.2	2	0.1	1
Chickenpox (052)	6.1	52	6.1	55	5.4	48	3.8	33
Common Cold & URTI NOS (460 & 465)	167.1	1431	157.9	1413	145.5	1297	131.9	1141
Conjunctiva Disorders (372)	40.8	349	39.9	357	36.0	321	39.2	339
Herpes Simplex (054)	5.4	46	3.9	35	6.3	56	6.4	55
Herpes Zoster (053 Excl 053.1)	7.2	62	6.5	58	6.1	54	7.3	63
Impetigo (684)	11.1	95	11.1	99	11.7	104	12.1	105
Infectious Mononucleosis (075)	0.5	4	0.7	6	0.2	2	0.6	5
Influenza-Like Illness (487)	8.1	69	10.1	90	10.0	89	10.1	87
Intestinal Infectious Diseases (001-009)	21.8	187	18.1	162	18.6	166	24.0	208
Laryngitis & Tracheitis Acute (464)	11.7	100	12.1	108	11.0	98	11.0	95
Lower Respiratory Tract Infection (LRTI)	137.2	1175	134.3	1202	136.7	1218	123.8	1071
Measles (055)	0.0	0	0.1	1	0.0	0	0.0	0
Meningitis & Encephalitis	0.1	1	0.0	0	0.0	0	0.1	1
Mumps (072)	0.1	1	0.0	0	0.1	1	0.2	2
NonInfective Enteritis & Colitis (555-558)	9.1	78	8.3	74	6.7	60	8.6	74
Otitis Media Acute (381.0,382.0 & 382.9)	44.1	378	40.9	366	41.1	366	35.4	306
Peripheral Nervous System Dis (350-359)	7.6	65	6.3	56	8.8	78	5.9	51
Pleurisy (511)	1.1	9	0.8	7	1.2	11	0.9	8
Pneumonia and Pneumonitis (480-486)	1.4	12	2.5	22	0.9	8	1.7	15
Respiratory System Diseases (460-519)	451.8	3869	430.2	3850	425.8	3795	397.0	3434
Rubella (056)	0.0	0	0.0	0	0.1	1	0.0	0
Scabies (133.0)	2.1	18	2.0	18	1.0	9	1.7	15
Sinusitis Acute (461)	28.6	245	24.5	219	23.8	212	23.7	205
Skin & Subcutaneous Tiss Infections (680-686)	57.5	492	59.8	535	58.5	521	59.3	513
Strep Sore Throat & Scarl Periton Absc (034 & 475)	0.6	5	0.6	5	1.2	11	1.5	13
Symptoms Involving Nervous Musculoskeletal (781)	5.8	50	5.7	51	5.5	49	5.9	51
Symptoms Involving Respiratory & Chest (786)	43.8	375	48.7	436	48.7	434	48.0	415
Symptoms Involving Skin & Integument Tissue (782)	29.7	254	30.3	271	33.4	298	34.9	302
Tonsillitis & Acute Pharyngitis (462-463)	66.7	571	65.0	582	68.4	610	64.4	557
Upper Respiratory Tract Infections (URTI)	306.6	2625	288.3	2580	278.8	2485	255.4	2209
Urinary Tract Infection Cystitis (595 & 599.0)	43.7	374	42.5	380	42.2	376	40.7	352
Viral Hepatitis (070)	0.2	2	0.1	1	0.2	2	0.3	3
Whooping Cough (033)	0.0	0	0.0	0	0.0	0	0.0	0
Population at Risk:		856302		894871		891302		865014
Number of Practices:		92		95		96		93

Further Information:

The Weekly Returns Service (WRS) was established in 1964 at the Birmingham Research Unit of the Royal College of General Practitioners. The WRS monitors the number of patients consulting with new episodes of illness classified by diagnosis in England and Wales and provides weekly incidence rates per 100,000 population for these new episodes of illness. The WRS has archived all data since 1967 providing an unrivalled opportunity to look at long term trends of disease. The Birmingham Research Unit, run by DM Fleming (Director) is internationally renowned for its expertise on respiratory illnesses, particularly influenza and influenza-like illnesses.

For further information please contact:

Joanne Miles
Unit Manager
Birmingham Research Unit of the Royal College of General Practitioners
Lordswood House
54 Lordswood Road
Harborne
Birmingham B17 9DB

Tel: +44 (0)121 426 1125
Fax: +44 (0)121 428 2084
Email: jmiles@rcgpbhamresunit.nhs.uk

If you wish to be included on our email notification list please send your email address to jmiles@rcgpbhamresunit.nhs.uk

This bulletin can be found at www.rcgp.org.uk/bru together with further information about the Birmingham Research Unit and a selection of publications and morbidity reports.

The bulletin can also be found at www.hpa.org.uk/cdr/pages/primarycarewr.htm.