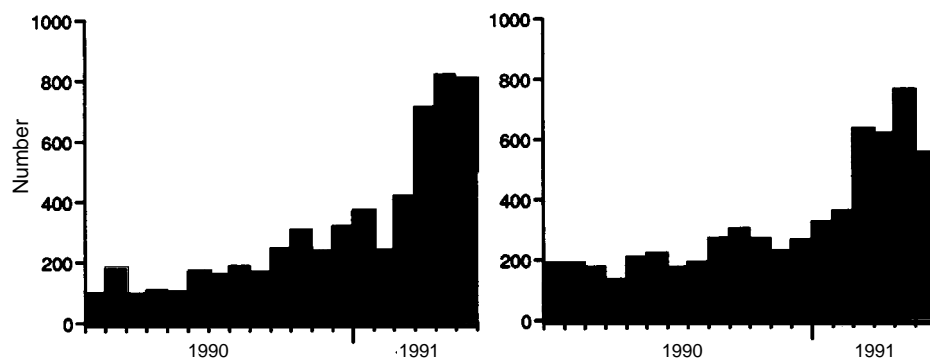


Communicable Disease Report

Dysentery surveillance

The numbers of notifications to OPCS of dysentery and laboratory reports of isolations of *Shigella sonnei* in England and Wales rose during 1990 with a further increase in recent weeks (see Figure). Large community outbreaks of dysentery have occurred in recent months in West Yorkshire, South Wales/Avon, Humberside and Greater Manchester. Most were detected initially in primary schools then spread into the wider community. Isolates from each of the outbreaks have been typed by colicin production and antibiotic resistance pattern at Guildford Public Health Laboratory. Each outbreak has been characterised by its own strain or group of strains of *S. sonnei*.

Figure Laboratory reports to CDSC of *Shigella sonnei* Notifications of dysentery to OPCS



In Humberside, the outbreak started in Immingham and subsequently spread to other parts of Greater Grimsby. The number of cases reported from Grimsby has since subsided but isolates of the same strain are now being reported from the nearby conurbations of Hull and Scunthorpe. This pattern of spread has been seen in other outbreaks: the strain of *S. sonnei* isolated from an outbreak that started in Bradford in Autumn 1990 has since been identified in Leeds, while a strain first isolated from cases in the Cardiff area has been isolated from Bristol. Several different strains have been isolated from a community outbreak that is spreading through Greater Manchester. The Communicable Disease Surveillance Centre will be grateful for the prompt reporting of further outbreaks of dysenteric infection.

Salmonella surveillance

CDSC has received preliminary reports about 10 confirmed outbreaks of salmonella infection since the beginning of June affecting between nine and 40 individuals in each incident. Nine were due to *S. enteritidis* (PT4 = 4) and one was due to *S. typhimurium*. The settings for these outbreaks was as follows: work-place or institutional canteen (4), private party or reception (4), commercial restaurant (1) and barbecue (1). Investigations are underway to determine the sources and vehicles of infection. Preliminary information suggests that, in three of these episodes, food had been stored at ambient temperature for some time before use. These incidents emphasise the need for extra care when storing food, which may be subject to warm summer temperatures for some time after cooking. The gastrointestinal disease section of CDSC welcomes early telephone reports of all outbreaks of foodborne illness on 081 200 6868 (ext 4411).

Salmonella infections:
weeks 91/24 - 27

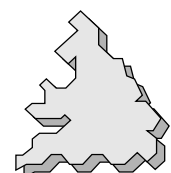
Other gastrointestinal tract infections:
weeks 91/24 - 27

AIDS and HIV-1 infection:
United Kingdom

Gastrointestinal virus infections:
weeks 91/24 - 27

Bacteraemia and bacterial meningitis:
weeks 91/24 - 27

Unusual infections



Salmonella infections, England and Wales: laboratory reports weeks 91/24 – 27

Serotype	Reports to CDSC					Reports from DEP
	91/24	91/25	91/26	91/27	Total	Total
<i>S. enteritidis</i> (PT4)	166 (124) *	196 (148) *	237 (187) *	268 (223) *	867 (682) *	1261 (1091) *
<i>S. typhimurium</i>	50	61	57	82	250	360
<i>S. bredeney</i>	3	2	8	13	26	20
<i>S. virchow</i>	4	5	3	10	22	41
<i>S. newport</i>	4	5	2	6	17	25
<i>S. heidelberg</i>	2	3	4	7	16	19
<i>S. agona</i>	2	2	5	3	12	14
<i>S. montevideo</i>	4	1	1	6	12	10
<i>S. hadar</i>	1	3	2	5	11	15
Other serotypes	25	27	30	31	113	182
Total	261	305	349	431	1346	1949

* *S. enteritidis* PT4

Less than 10 laboratory reports of the following serotypes were received by CDSC during this period:

- 8: *S. infantis*, *S. saint-paul*.
 7: *S. kedougou*.
 5: *S. anatum*, *S. blockley*, *S. braenderup*, *S. java*, *S. mbandaka*, *S. panama*, *S. thompson*.
 4: *S. derby*.
 3: *S. brandenburg*, *S. emek*, *S. indiana*, *S. ohio*, *S. san-diego*, *S. schwarzengrund*.
 2: *S. arizonae*, *S. berta*, *S. havana*, *S. javiana*, *S. muenster*, *S. poona*, *S. rubislaw*, *S. weltevreden*.
 1: *S. adelaide*, *S. bovis-morbificans*, *S. chester*, *S. colindale*, *S. gold-coast*, *S. hvittingfoss*, *S. kentucky*, *S. livingstone*, *S. london*, *S. mississippi*, *S. muenchen*, *S. nima*, *S. richmond*, *S. stanley*, *S. stanleyville*, *S. tennessee*, *S. uganda*.

Comment

***S. enteritidis* PT 4:** 4/6 guests at a dinner party had D&V the next day, all those ill had eaten chocolate mousse prepared from fresh eggs; 3/3 children who ate leftover mousse the following day were also subsequently ill. The three children and one adult were admitted to hospital. (6 persons were positive). **PT 4:** 11/11 persons had diarrhoea about 2 days after meals at a restaurant (11 persons were positive).

***Clostridium perfringens*:** 48/600 persons were ill after meals in a factory canteen (5 persons had enterotoxin detected in faeces). **Serotype 55:** 10/15 persons attending a journal club had diarrhoea 11-17 hours after a meal including chicken and rice (14 persons were positive).

Red kidney beans: 60 persons had vomiting approximately 3 hours after a meal of chilli con carne; the dried beans were said to have been soaked overnight before cooking.

Food poisoning notifications from OPCS

	Number of notifications				Total notifications 91/24–27	Cumulative total 1991
	91/24	91/25	91/26	91/27		
Formally notified §	829	797	701	756	3083	13960
Otherwise ascertained §	416	346	415	350	1527	7194

§ provisional

Other gastrointestinal tract infections: weeks 91/24 – 27

Laboratory reports	Number of reports received				Total reports 91/24–27 (acquired abroad)	Cumulative total 1991
	91/24	91/25	91/26	91/27		
<i>Campylobacter</i>	1211	920	1020	1073	4224 (284)	14357
<i>Shigella</i>	281	128	247	284	940 (92)	4332
Enteropathogenic <i>E. coli</i> (children <3 years)	12	9	9	18	48 (2)	297
<i>Aeromonas</i>	8	11	6	6	31 (6)	98
<i>Plesiomonas</i>	–	–	–	–	–	24
<i>Vibrio</i>	–	2	2	3	7 (6)	25
<i>Clostridium difficile</i>	15	10	15	20	60 (–)	471
<i>Yersinia</i>	10	6	10	5	31 (2)	193

AIDS and HIV-1 infection: United Kingdom

During June 1991, 92 new cases of AIDS were reported. Sixty-four were probably infected through sexual intercourse between men (10 died), 17 through sexual intercourse between men and women (2 died), nine through injecting drug use (3 died), and one through either injecting drug use or sexual intercourse between men (1 died). The exposure category of one case was undetermined.

Since reporting began in 1982, a total of 4758 AIDS cases (4492 men and 266 women) have been reported of whom 2747 are known to have died (Table 1). The 1337 cases reported between July 1990 and June 1991 was 26% more than the number reported during the preceding twelve month period. In women there was a 93% increase (from 58 to 112) in reports of AIDS cases in the most recent twelve months, whereas in men there was a 22% increase (from 1003 to 1225). Much of the increase in AIDS cases in women was attributable to a rise (from 10 to 28) among female injecting drug users.

Between week 45 in 1984 and week 26 in 1991, 15,712 reports of HIV-1 infected persons (13,821 males, 1756 females, and 135 whose sex was not stated) were received (Table 2). In the most recent year 459 newly recognised HIV-1 infections probably acquired through sexual intercourse transmission between men and women were reported, an increase of 36% from the previous year.

The potential for HIV-1 transmission through heterosexual intercourse is indicated by the number of known infected adults who are heterosexual (Tables 3 and 4), 847 (18%) of AIDS cases and 4769 (34%) of known HIV-1 infected

persons.

The geographical distribution of AIDS and HIV-1 for the United Kingdom, Channel Islands and Isle of Man is shown in tables 5 and 6. The ratio of reported AIDS cases to known HIV-1 infected persons in Scotland (1 : 7.8) is much lower than in England and Wales (1 : 3.1).

Surveillance data (Tables 7-9) on AIDS and HIV-1 infection in children require careful interpretation, because most children born to HIV-1 infected mothers turn out not to be infected and many children infected at or around birth do not have their infection recognised until illness develops at an older age. Moreover, at present most known HIV-1 infections in children have resulted from blood transfusion or blood factor treatment and transmission of infection from these sources has since been eliminated.

A total of 67 AIDS cases in children were reported of whom 29 are known to have died (Table 7). The relatively large number of AIDS cases in the mother to infant exposure category reported between May 1990 and April 1991 reflects enhanced reporting as a result of national case finding.

A total of 345 reports of HIV-1 infected children, who were aged 14 years or under when infection was first diagnosed have been received (Table 8). Two-thirds of children infected through blood factor treatment for haemophilia are now aged 15 years or over.

The annual numbers of children with AIDS who were born to HIV-1 infected mothers has increased since 1979 (Table 9). More children born infected between 1979 and 1991 can be expected to present with AIDS in the future.

Table 1 AIDS cases and deaths by exposure category and date of report: United Kingdom to 30 June 1991

How persons probably acquired the virus	Jul 89 - Jun 90		Jul 90 - Jun 91		Jan 82 - Jun 91			
	Male	Female	Male	Female	Male	Deaths	Female	Deaths
Sexual intercourse								
between men	815	—	956	—	3699	2164	—	—
between men and women								
"high risk" partner ¹	3	8	4	6	13	6	27	14
other partner abroad ²	50	23	82	41	187	91	88	37
other partner UK	3	5	9	8	19	10	16	6
Injecting drug use (IDU)	46	10	65	28	153	67	56	28
IDU & sexual intercourse between men	14	—	20	—	70	42	—	—
Blood								
blood factor (e.g. for haemophilia)	58	1	54	1	258	179	4	2
blood/tissue transfer (e.g. transfusion)								
abroad	2	2	2	9	14	9	26	17
UK	3	4	1	5	14	12	15	10
Mother to infant	1	2	7	12	16	6	27	12
Other/undetermined	8	3	25	2	49	31	7	4
Total	1003	58	1225	112	4492	2617	266	130

1. Includes men and women who had sex with injecting drug users, or with those infected through blood factor treatment or blood transfusion, and women who had sex with bisexual men.

2. Includes persons without other identified risks from, or who have lived in, countries where the major route of HIV-1 transmission is through sexual intercourse between men and women.

Table 2 HIV-1 infected persons by exposure category and date of report: United Kingdom to week 91/26

How persons probably acquired the virus	Weeks 89/27– 90/26			Weeks 90/27– 91/26			Weeks 84/45 – 91/26		
	Male	Female	NS ⁴	Male	Female	NS ⁴	Male	Female	NS ⁴
Sexual intercourse									
between men	1247	–	–	1470	–	–	9181	–	–
between men and women									
“high risk” partner ¹	8	43	–	4	37	–	27	200	1
other partner abroad ²	112	78	2	154	152	1	468	369	8
other partner UK	18	18	–	14	19	–	53	60	2
under investigation	28	30	–	39	38	1	138	162	1
Injecting drug use (IDU)	158	46	1	149	57	–	1415	665	30
IDU & sexual intercourse between men	21	–	–	24	–	–	172	–	–
Blood									
blood factor (e.g. for haemophilia)	35	–	–	47	–	–	1263	7	1
blood/tissue transfer (e.g. transfusion)									
abroad/UK	11	11	1	4	10	–	73	70	2
Mother to infant ³	11	15	–	14	12	–	42	47	2
Other/undetermined	83	19	6	107	28	3	989	176	88
Total	1732	260	10	2026	353	5	13821	1756	135

1 and 2. As for table 1.

3. By date of report that established infected status.

4. Sex not stated on report.

Table 3 Sexual orientation of adult (15 years or over) AIDS cases by date of report: United Kingdom to 30 June 1991

Sexual orientation	Jul 89 – Jun 90		Jul 90 – Jun 91		Jan 82 – Jun 91	
	Cases	(%)	Cases	(%)	Cases	(%)
Homosexual men	709	(68)	847	(66)	3196	(69)
Bisexual men	120	(12)	130	(10)	576	(12)
Heterosexual men and women	211	(20)	299	(23)	847	(18)
Total ¹	1040	(100)	1276	(100)	4619	(100)

1. Excludes some cases under investigation.

Table 4 Sexual orientation of adult (15 years or over) HIV-1 infected persons by date of report: United Kingdom to week 91/26

Sexual orientation	Weeks 89/27– 90/26		Weeks 90/27– 91/26		Weeks 84/45 – 91/26	
	Number	(%)	Number	(%)	Number	(%)
Homosexual men/bisexual men	1268	(68)	1494	(67)	9349	(66)
Heterosexual men and women ¹	594	(32)	722	(33)	4769	(34)
Total	1862	(100)	2216	(100)	14118	(100)

1. Includes those exposed through injecting drug use or infected through blood factor treatment or blood transfusion who were not known to be homosexual or bisexual men.

Tables 1–6 were prepared from voluntary confidential reports by clinicians and microbiologists sent directly to the PHLS AIDS Centre at CDSC (081 200 6868) and to the Communicable Diseases (Scotland) Unit (041 946 7120), from returns by Haemophilia Centre Directors to the Oxford Haemophilia Centre (0865 225316), and monthly returns by paediatricians to the British Paediatric Surveillance Unit.

Table 5 Geographical distribution of AIDS cases and deaths by date of report: to 30 June 1991

Country or region of first report	Jul 89 – Jun 90		Jul 90 – Jun 91		Cumulative total since 1982	
	Cases	Related deaths ¹	Cases	Related deaths ¹	Cases	Related deaths ¹
England:						
Northern	23	11	15	2	88	51
Yorkshire	25	16	36	13	123	77
Trent	20	8	28	12	94	55
E Anglia	12	7	10	2	50	33
NW Thames	422	196	480	91	1847	1040
NE Thames	141	54	284	73	857	450
SE Thames	128	57	139	50	520	323
SW Thames	55	35	45	10	178	115
Wessex	23	13	40	17	114	71
Oxford	24	13	32	9	103	59
S Western	21	12	20	6	89	55
W Midlands	25	12	33	7	107	59
Mersey	7	3	21	10	62	43
N Western	56	27	48	17	190	116
Wales	20	9	17	14	74	57
Northern Ireland	7	6	5	4	24	21
Scotland	52	17	84	28	238	122
United Kingdom total	1061	496	1337	365	4758	2747
Ch. Islands/Isle of Man	1	1	1	1	4	4

1. These deaths are of patients referred to in the previous column and known to have occurred at any time up to 30 June 1991. Reporting of recent deaths is incomplete.

Table 6 Geographical distribution and exposure category of HIV-1 infected persons: to week 91/26

Country or region of first report	Sexual intercourse											Cumulative total Weeks 84/45–91/26
	between men	between men and women			Injecting ¹ drug use			Blood	Other/Undetermined			
		M	F	NS ²	M	F	NS ²		M	F	NS ²	
England:												
Northern	154	23	14	–	46	11	1	100	12	–	–	361
Yorkshire	217	27	30	–	30	20	–	74	11	2	–	411
Trent	213	29	20	–	43	15	–	77	5	5	–	407
E Anglia	95	17	7	–	27	12	–	38	9	2	–	207
NW Thames	3718	122	183	–	286	94	2	69	214	35	17	4740
NE Thames	1637	122	133	7	133	73	2	195	313	43	26	2684
SE Thames	1077	70	85	1	143	61	–	149	111	27	2	1726
SW Thames	240	37	49	2	31	10	–	31	63	7	1	471
Wessex	206	14	19	–	31	8	–	35	22	6	3	344
Oxford	177	22	37	1	45	14	–	119	9	2	–	426
S Western	194	28	22	–	37	6	–	32	10	3	–	332
W Midlands	226	25	30	–	23	4	–	157	46	8	–	519
Mersey	87	11	6	–	9	7	–	48	19	1	–	188
N Western	442	38	19	–	45	24	–	124	21	9	–	722
Wales	113	22	17	–	9	2	–	62	10	1	–	236
Northern Ireland	43	6	10	–	2	3	–	17	2	–	–	83
Scotland	342	73	110	1	647	301	25	89	154	72	41	1855
United Kingdom total	9181	686	791	12	1587	665	30	1416	1031	223	90	15712
Ch. Islands/Isle of Man	12	2	2	–	4	2	–	2	2	1	–	27

1. Includes 172 male drug users who also had sexual intercourse with other men.

2. Sex not stated on report.

Table 7 AIDS cases and deaths in children¹ by exposure category: to 30 April 1991

How children probably acquired the virus	May 89 - Apr 90		May 90 - Apr 91		Total Jan 82 - Apr 91		15 years or over at death or by 30 April 1991	
	Diagnosis ²	Report ²	Diagnosis ²	Report ²	Cases	Deaths	Cases	Deaths
Mother to infant	9	3	12	20	42	18	–	–
Blood								
blood factor (e.g. for haemophilia)	4	4	5	7	19	9	6	1
blood/tissue transfer (e.g. transfusion)		–	1	1	6	2	–	–
Other/undetermined		–		–	–	–	–	–
Total	13	7	18	28	67	29	6	1

1. All were aged 14 years or under when AIDS was first diagnosed.

2. Differences between timing of diagnosis and timing of report are due to reporting delay.

Table 8 HIV-1 infection¹ and deaths² in children³ by sex and exposure category: cumulative to 30 April 1991

How children probably acquired the virus	England, Wales and N. Ireland			Scotland			Total		15 years or over at death or by 30 April 1991	
	Male	Female	NS	Male	Female	NS	Cases	Deaths	Cases	Deaths
Mother to infant	35	37	1	7	10	1	91	18	–	–
Blood										
blood factor (e.g. for haemophilia)	213	–	–	17	–	–	230	13	144	4
blood/tissue transfer (e.g. transfusion)	9	7	1	2	–	–	19	2	3	–
Other/undetermined	4	–	–	1	–	–	5	–	5	–
Total	261	44	2	27	10	1	345	33	152	4

1. Includes all children with AIDS, or with virus detected, or with HIV-1 antibody at age 18 months or over.

2. Deaths in HIV-1 infected children without AIDS are included.

3. All were aged 14 years or under when infection was first diagnosed.

Table 9 HIV infection status and deaths¹ by year of birth of children born to HIV-1 infected mothers

Year of birth	Infected ²				Indeterminate ³		Not infected		Total	Deaths ¹
	England, Wales and N. Ireland		Scotland		England, Wales and N. Ireland	Scotland	England, Wales and N. Ireland	Scotland		
	AIDS	not AIDS ⁴	AIDS	not AIDS ⁴						
1979-82	4	2	–	–	–	–	–	–	6	1
1983-84	3	6	1	4	–	–	–	1	15	3
1985-86	9	11	2	6	5	13	5	27	78	8
1987-88	12	12	–	1	24	7	11	25	92	3
1989-90	10	3	1	2	43	17	3	12	91	8
1991	–	–	–	–	7	2	–	–	9	–
Not known	–	1	–	1	6	–	–	–	8	–
Total	38	35	4	14	85	39	19	65	299	23

1. Deaths in HIV-1 infected children without AIDS are included.

2. See footnote 1, table 8.

3. Aged less than 18 months when last tested positive for HIV-1 antibody and without other evidence of HIV-1 infection, or not yet

tested for HIV-1 antibody.

4. HIV-1 infected without a definitively or presumptively diagnosed AIDS indicator disease

Note: Owing to ascertainment bias the rate of vertical HIV-1 transmission from mother to infant cannot be estimated from surveillance data. Tables 7-9 were produced through collaboration between the Institute of Child Health London, the PHLS AIDS Centre at CDSC (081 200 6868) and the Communicable Diseases (Scotland) Unit (041 946 7120). Data sources include regular returns by obstetricians to the Royal College of Obstetricians and Gynaecologists register of HIV positive pregnant women, monthly returns by paediatricians to the British Paediatric Surveillance Unit, returns by Haemophilia Centre Directors to the Oxford Haemophilia Centre (0865 225316), and voluntary confidential reports by clinicians and microbiologists to the PHLS AIDS Centre and CD(S)U.

Comment

Campylobacter: one region reported more than 10% cases: Yorkshire (562 cases).

Seventy-five outbreaks were reported: 74 family outbreaks and one in a nursery.

Shigella: *S. boydii* 19 (7 abroad); *S. dysenteriae* 7 (4 abroad); *S. flexneri* 59 (39 abroad); *S. sonnei* 855 (42 abroad). *S. sonnei*: continuing community outbreaks in Yorkshire, N Western and S Western regions; 11 family outbreaks were reported.

S. boydii type 2: 3 family outbreaks were reported. *S. flexneri*, type 2: 1 family outbreak was reported.

Notifications of dysentery for this period were: 139, 170, 276 and 275 respectively; the cumulative total for 1991 is 3890.

Aeromonas: *A. caviae* 5; *A. hydrophila* 20 (4 abroad); *A. sobria* 4 (1 abroad); *Aeromonas sp* 2 (1 abroad).

Vibrio: *V. cholerae* non 01, 6 (5 abroad); *V. parahaemolyticus* 1 (abroad).

Clostridium difficile: 3 regions reported more than 10% cases: Yorkshire (19 cases), Wessex (9) and Mersey (11).

Yersinia: *Y. enterocolitica* 27 (1 abroad); *Y. pseudotuberculosis* 1; *Yersinia sp* 3 (1 abroad).

Cryptosporidium: 2 regions reported more than 10% cases: SWestern (36 cases) and NWestern (54). Eight family outbreaks were reported.

Giardia: 2 regions reported more than 10% cases: NE Thames (66 cases) and NWestern (48). 12 family outbreaks were reported.

Entamoeba histolytica: one family outbreak was reported - acquired in Tanzania.

Taenia: 9: *T. saginata* 5 (Eritrea, Ethiopia, France, one each).

Trichostrongylus 4 (Pakistan 1).

Trichuris 24 (Vietnam 3, Bangladesh 2, Bhutan, Cameroun, Central America, Comoros, Far East, Seychelles, new immigrant, one each).

Laboratory reports	Number of reports received				Total reports 91/24-27 (acquired abroad)	Cumulative total 1991
	91/24	91/25	91/26	91/27		
<i>Cryptosporidium</i>	95	69	105	83	352 (22)	2700
<i>Entamoeba histolytica</i>	12	8	48	6	74 (42)	517
<i>Giardia</i>	119	77	127	113	436 (104)	2732
<i>Blastocystis hominis</i>	3	3	5	1	12 (-)	75
<i>Dientamoeba fragilis</i>	1	-	1	-	2 (-)	27

Typhoid and paratyphoid, England and Wales: laboratory reports weeks 91/24 - 27

S. typhi: 3 cases aged 7-43 years were reported; 2 were from the Indian subcontinent and one from the Far East.

S. paratyphi A: 5 cases aged 7-35 years were reported; 4 from the Indian subcontinent and one from the Far East. One

excreter was reported (F 4y).

Notifications: 11 cases of typhoid and 5 of paratyphoid fever were statutorily notified (weeks 91/24-27).

Gastrointestinal virus infections, England and Wales: laboratory reports weeks 91/24 - 27

Laboratory reports	Number of reports received				Total reports 91/24-27	Cumulative total 1991
	91/24	91/25	91/26	91/27		
Adenovirus (EM faeces)	32	22	31	27	112	696
Adenovirus type 40/41	1	2	5	5	13	55
Astrovirus	1	4	1	4	10	181
Calicivirus	1	2	-	-	3	56
Rotavirus	225	107	146	165	643	10817
SRSV	16	8	12	9	45	400

Adenovirus (EM faeces): 3 regions reported more than 10% cases: Trent (21 cases), Mersey (18) and N Western (14).

Adenovirus 40/41: 9 cases were reported by Northern region.

Astrovirus: one region reported more than 2 cases: Mersey (3).

Rotavirus: 2 regions reported more than 10% cases: Yorkshire (86 cases) and W Midlands (93).

4 outbreaks were reported: one in a nursing home and 3 in families.

SRSV: 2 regions reported more than 5 cases: E Anglia (9 cases) and W Midlands (9).

Four outbreaks were reported: 2 in hospitals, one in a geriatric unit and one in an old peoples home.

Bacteraemia and bacterial meningitis, England and Wales: weeks 91/24 - 27

Laboratory reports	No. of reports received		Age		Total received	Cumulative total 1991
	Blood only	CSF only or CSF & blood	<1m	≥65y		
<i>Citrobacter sp</i>	12	–	–	4	12	94
<i>Enterobacter sp</i>	78	1	1	30	79	455
<i>Escherichia coli</i>	577	5	11	351	582	3820
<i>Klebsiella sp</i>	118	–	4	56	118	802
<i>Proteus sp</i>	101	–	1	73	101	670
<i>Salmonella sp</i>	19	–	–	5	19	107

Bacteraemia

Citrobacter sp. *C. freundii* 8; *C. koseri* 2.

Enterobacter sp. *E. aerogenes* 8; *E. agglomerans* 7; *E. cloacae* 56; *E. intermedius* 2; *E. sakazakii* 2.

Escherichia coli. M 70y with nasopharyngeal carcinoma had cerebral abscess (blood isolate) and F 75y had septic arthritis (blood and joint isolates).

Klebsiella sp. *K. aerogenes* 41; *K. oxytoca* 25; *K. ozaenae* 2; *K. pneumoniae* 42. *K. aerogenes*, F 63y had endocarditis. *K. ozaenae*, F 65y had septic arthritis (blood and joint isolates).

Proteus sp. *P. mirabilis* 74; *P. morgani* 9; *P. vulgaris* 2.

Salmonella sp. *S. enteritidis* 14 (PT 4, 10): 7 patients aged 50-80 years with diarrhoea and/or faecal isolate also. M 2y with Hirschsprung's disease; HIV-1 antibody positive M 40y and M 43y; F 32y with fever; M 37y with lymphoma; M 61y after visit to Thailand and M 62y with abdominal pain (all blood isolates). *S. indiana* 1: woman with gall-stones

and no gastrointestinal symptoms (blood and faeces isolates). *S. typhimurium*: 4 patients aged 1-81 years with diarrhoea and/or faecal isolate also including HIV-1 antibody positive M 46y. *S. virchow*, M 1y who suddenly died (blood isolate).

Also reported: *S. agona*, F 86y with ulcerative colitis and ileostomy wound infection (wound isolate only). *S. enteritidis* 4 (PT 4, 1): M 39y (urine and faeces isolates); M 66y with carcinoma of lung and pneumonia (sputum isolate only); F 67y with vasculitis (urine isolate only); F 70y with cystitis (urine isolate only). *S. heidelberg*, male patient (urine isolate only). *S. newport*, F 82y (urine isolate only). *S. typhimurium* 2: M 58y with aortic aneurysm (faeces and vessel wall isolates); patient from India (urine isolate only). *S. virchow*, woman with infected surgical wound after breast lumpectomy (wound isolate).

Laboratory reports	Total bacteraemia	UTI/GU surgery (pregnant)	Biliary tract disease (ERCP)	Intravascular lines	Leukaemia/bone marrow suppression (with IV-lines)
<i>Citrobacter sp</i>	12	3 (–)	1 (–)	2	2 (1)
<i>Enterobacter sp</i>	78	9 (–)	10 (–)	19	16 (8)
<i>Escherichia coli</i>	577	202 (7)	81 (3)	17	58 (8)
<i>Klebsiella sp</i>	118	28 (–)	18 (–)	10	24 (3)
<i>Proteus sp</i>	101	50 (2)	2 (–)	4	1 (–)

Meningitis

Enterobacter aerogenes. M 24y with hydrocephalus secondary to tumour had CSF shunt.

Escherichia coli. 2 neonates; M 1m (urine isolate also); M 60y

with ear infection and F 83y with urinary tract infection.

Proteus mirabilis. M 59y with cerebral abscess after cystoscopy (blood isolate only).

Unusual infections

Bacillus sp 3: F 39y after bone marrow transplant (blood isolate). *B. cereus*: two patients with leukaemia, one of whom had an IV-line (both blood isolates).

Campylobacter sp 7 (*C. jejuni*, 1): patients aged 20-76 years, all with gastrointestinal symptoms and/or faecal isolate also (all

blood isolates).

Shigella dysenteriae type 1: F 21y with diarrhoea and vomiting, recently travelled in India (blood isolate).

Yersinia enterocolitica 2: M 66y with renal transplant (blood isolate) and F 71y (urine isolate).

From week 91/01 data in CDR will be from England and Wales only, unless otherwise stated.

Weekly numbers are provisional and should not be used to indicate trends