



APPENDIX A – NHS Direct Syndromes by age-group & SHA

Data about calls to NHS Direct are collected and analysed on a daily basis by the Regional Surveillance Unit of the Health Protection Agency West Midlands / HPA Centre for Infections in collaboration with NHS Direct. This appendix presents NHS Direct syndromic calls as a proportion of total calls for 7 syndromes reported to NHS Direct: **'cold/flu', cough, diarrhoea, fever, 'eye problems', rash & vomiting**. Data about difficulty breathing calls will be added shortly.

For each syndrome data are presented as:

- 1) national proportions of calls by age group (2002-2006).
- 2) proportions of calls by Strategic Health Authority (SHA) (2006). The 10 SHA areas for England are shown in Map 1.

For further information please contact: Duncan Cooper [duncan.cooper@hpa.org.uk] or Frances Chinemana [frances.chinemana@nhsdirect.nhs.uk]

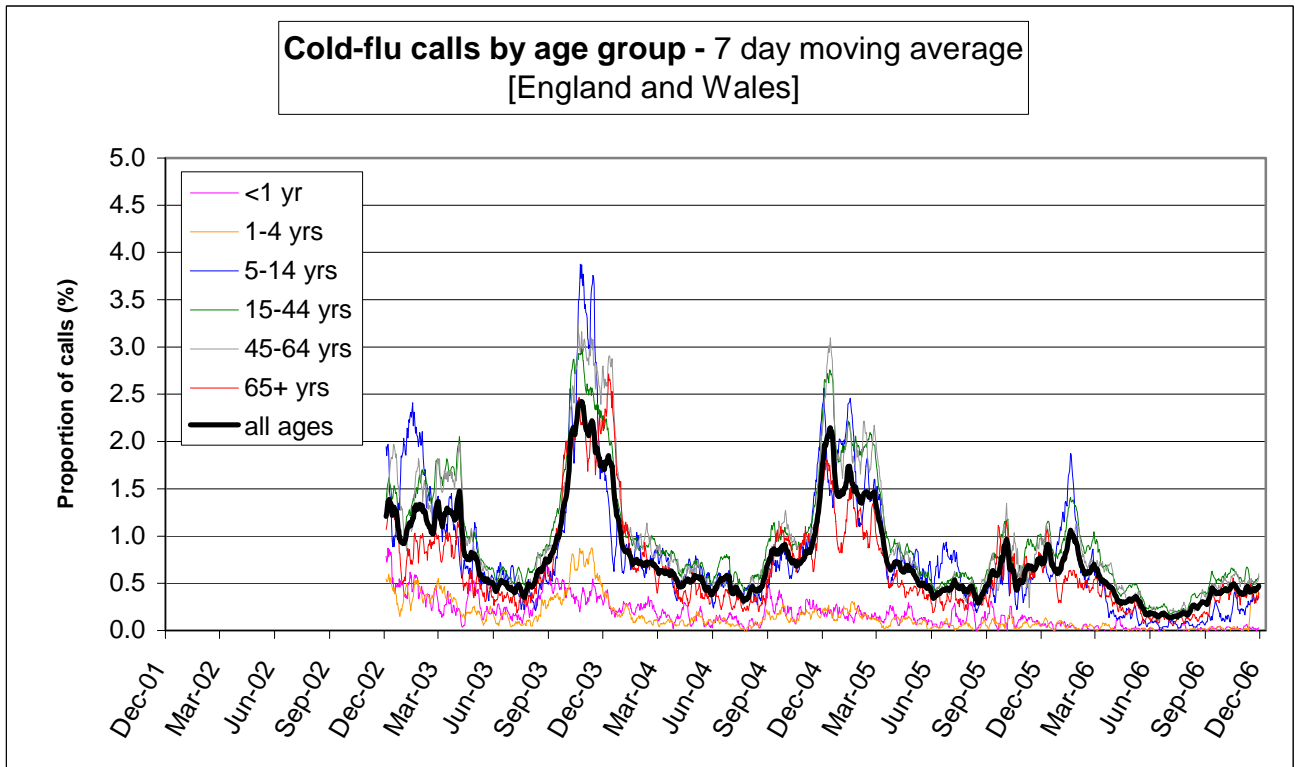
A summary of these data along with interpretation of current trends is contained within the NHS Direct Weekly Syndromic Surveillance Bulletin (<http://www.hpa.org.uk/cdr/pages/primarycarewr.htm>)

MAP 1: Strategic Health Authorities in England

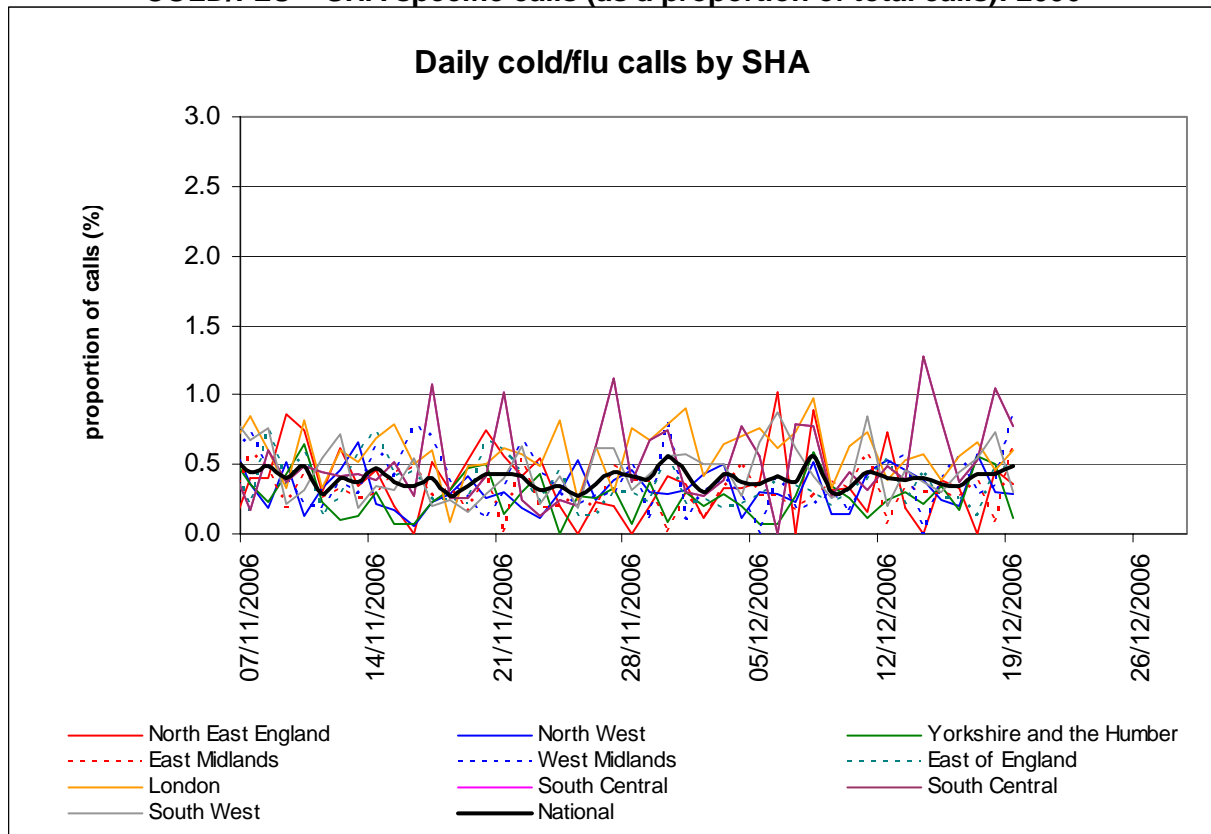


SYNDROMES

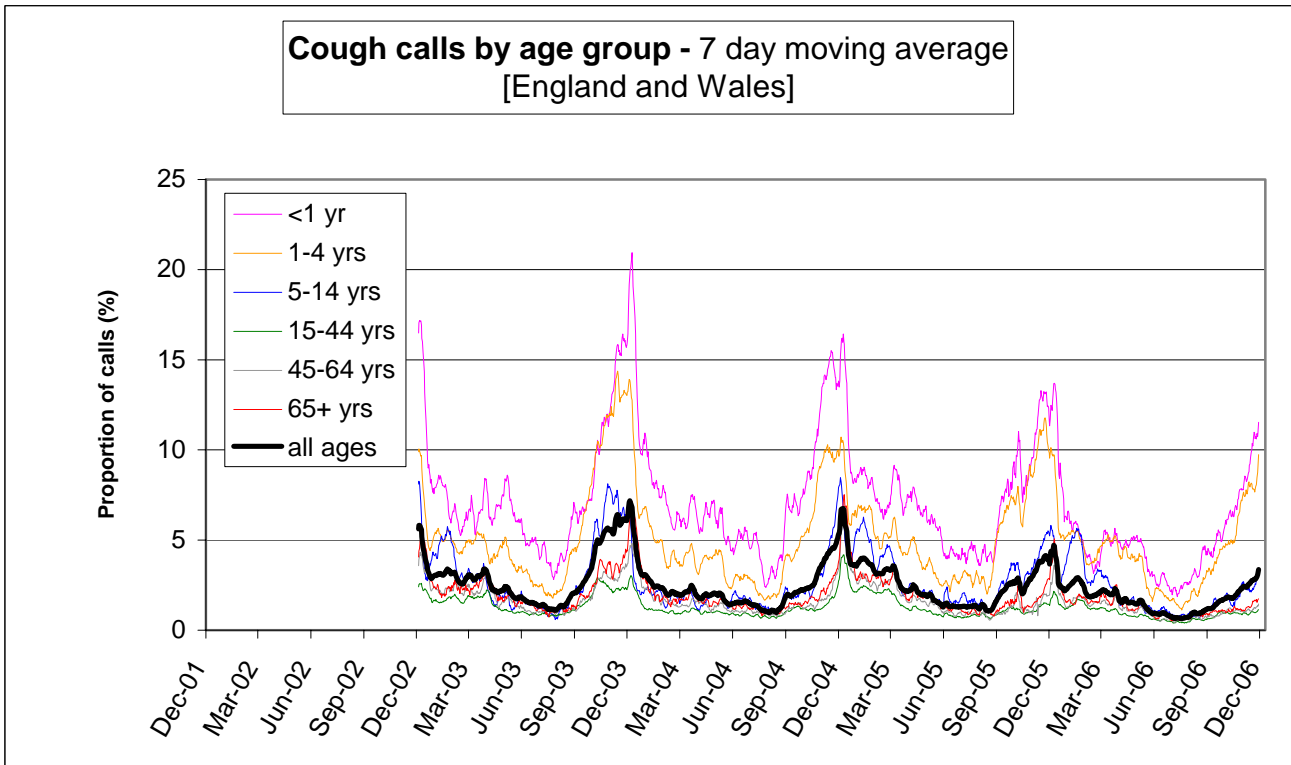
COLD/FLU – Age group specific calls (as a proportion of total calls): 2002-2006



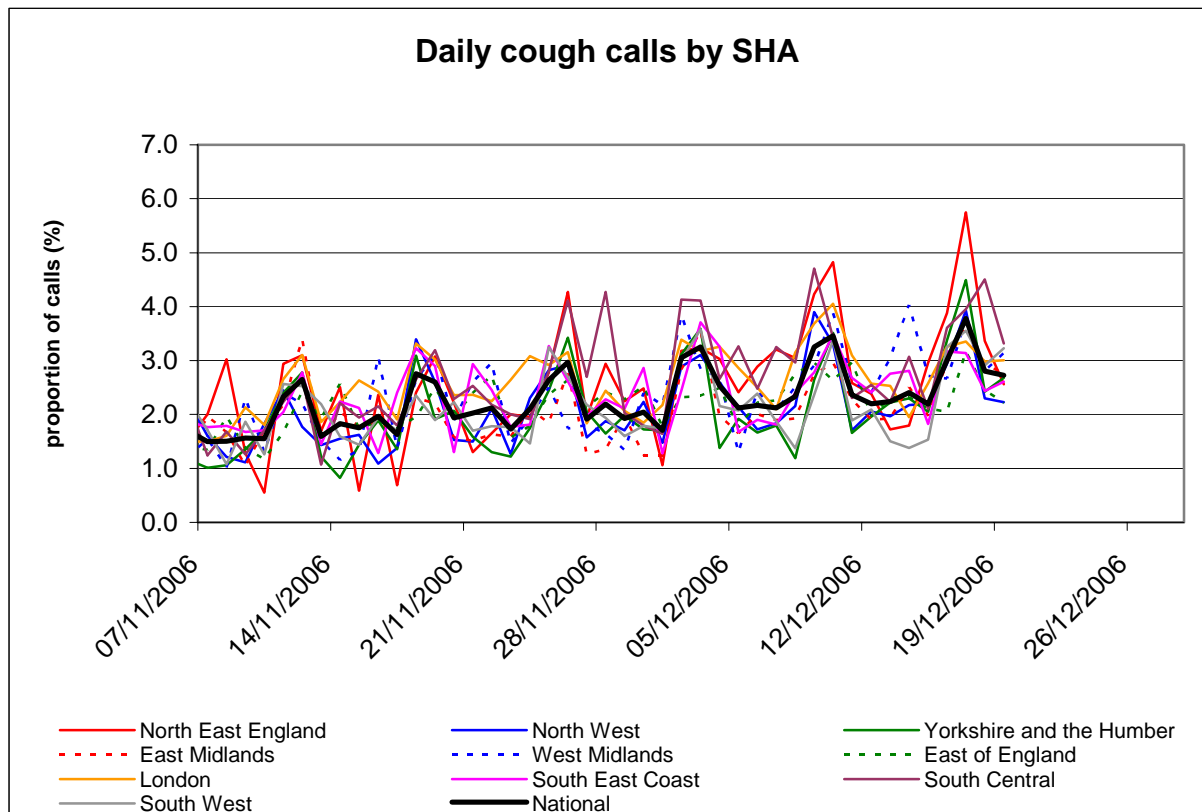
COLD/FLU – SHA specific calls (as a proportion of total calls): 2006



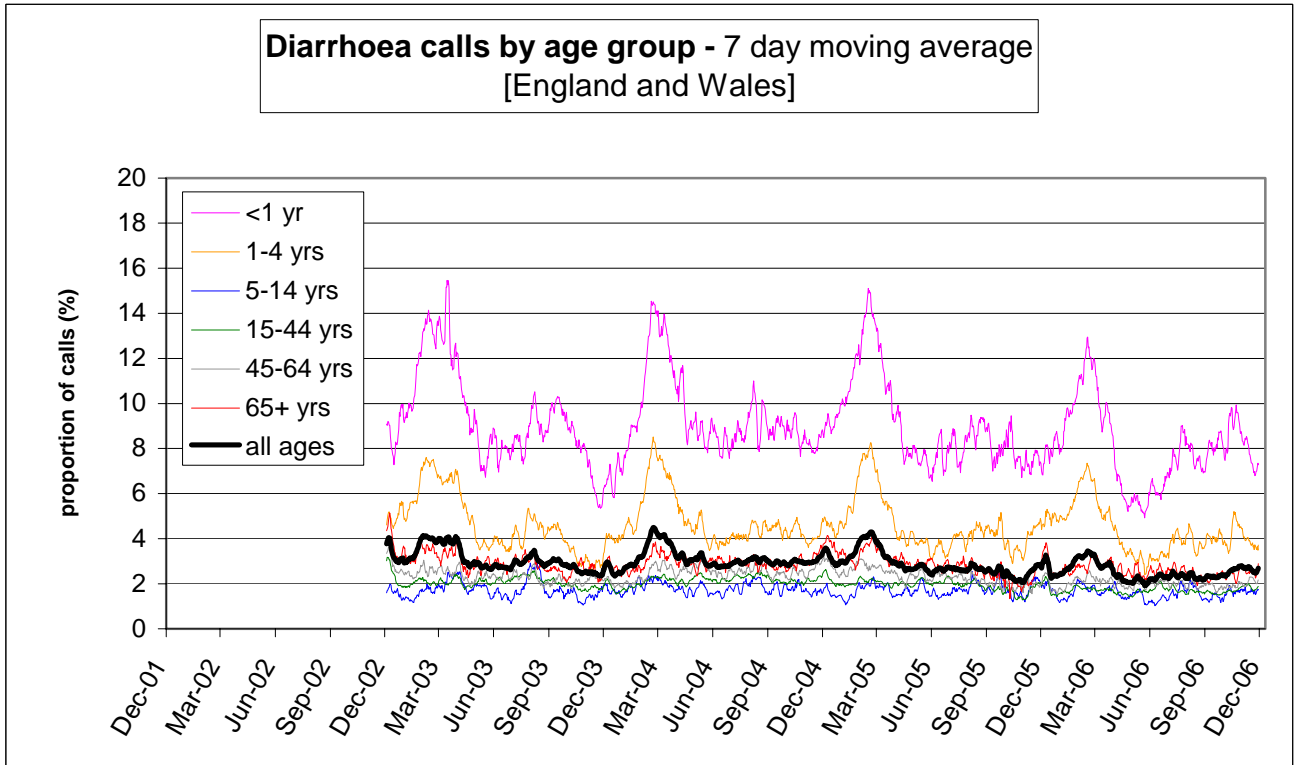
COUGH - Age group specific calls (as a proportion of total calls): 2002-2006



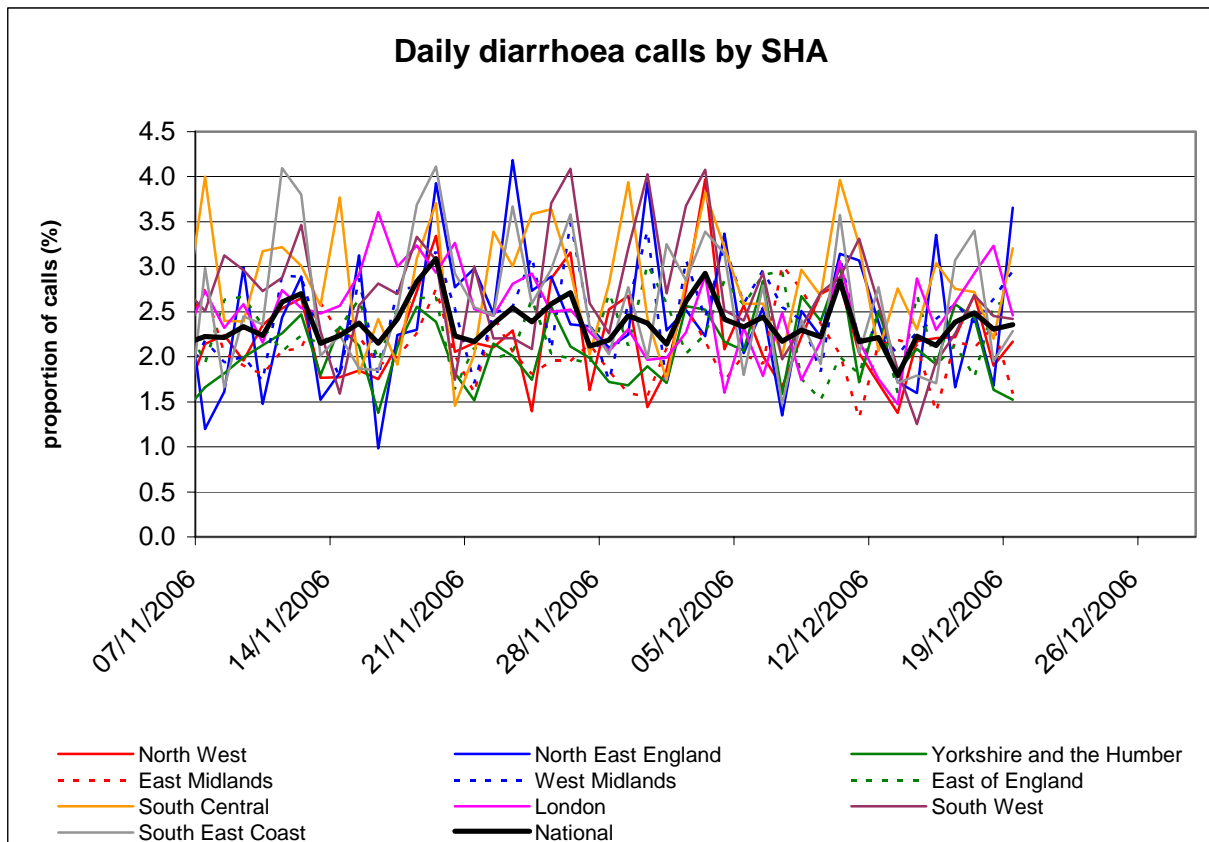
COUGH – SHA specific calls (as a proportion of total calls): 2006



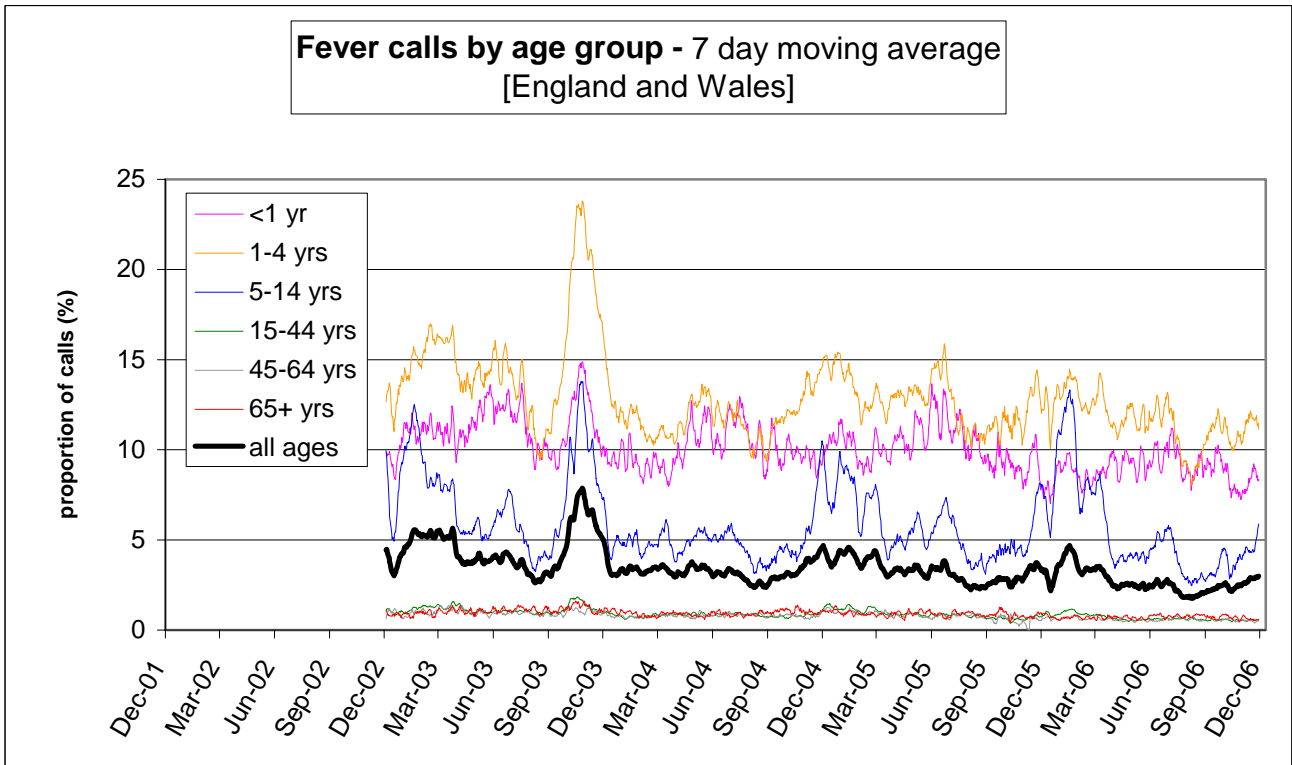
DIARRHOEA - Age group specific calls (as a proportion of total calls): 2002-2006



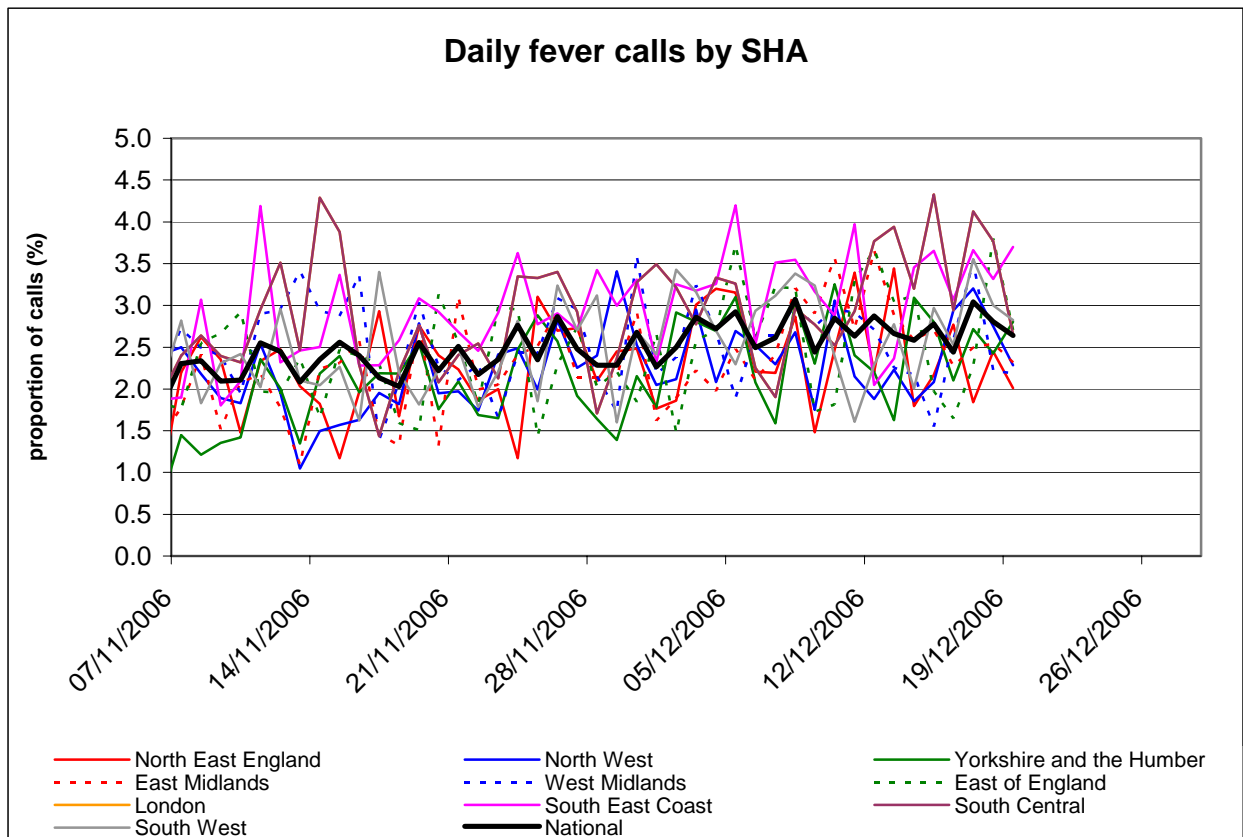
DIARRHOEA – SHA specific calls (as a proportion of total calls): 2006



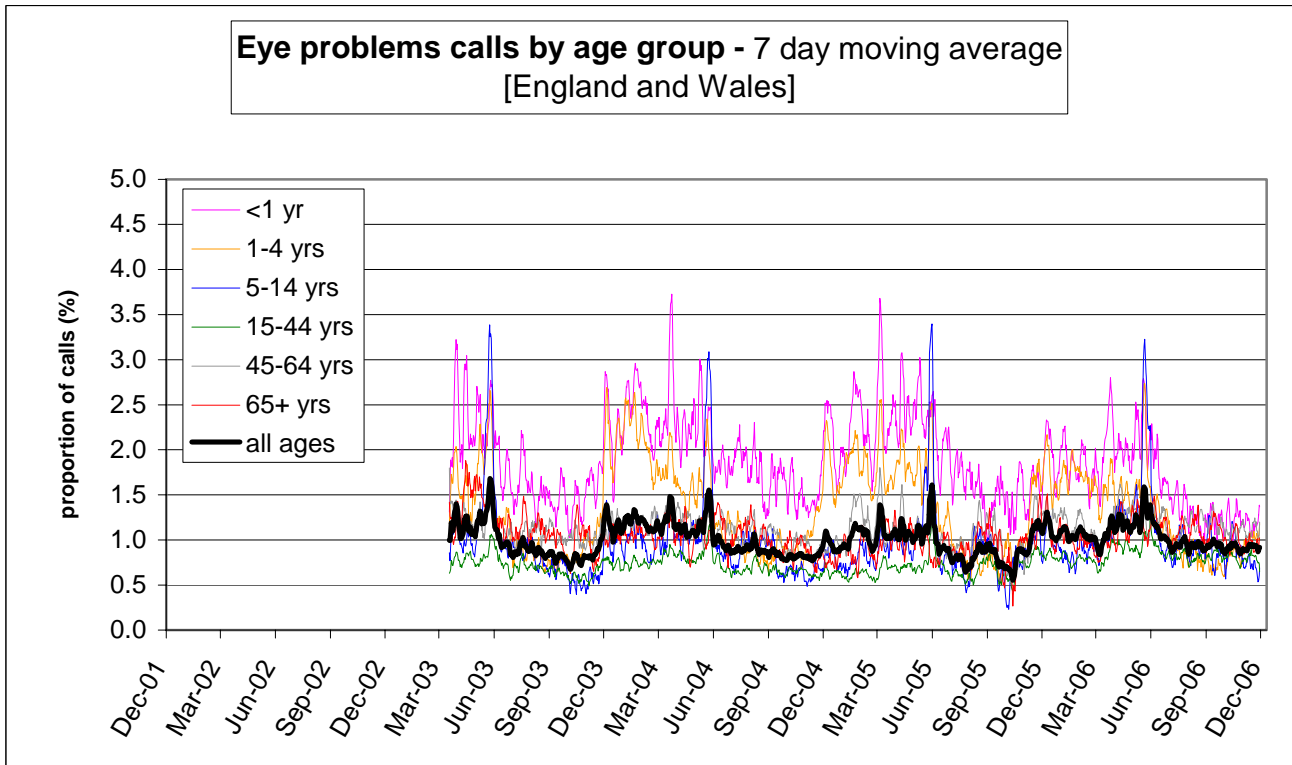
FEVER - Age group specific calls (as a proportion of total calls): 2002-2006



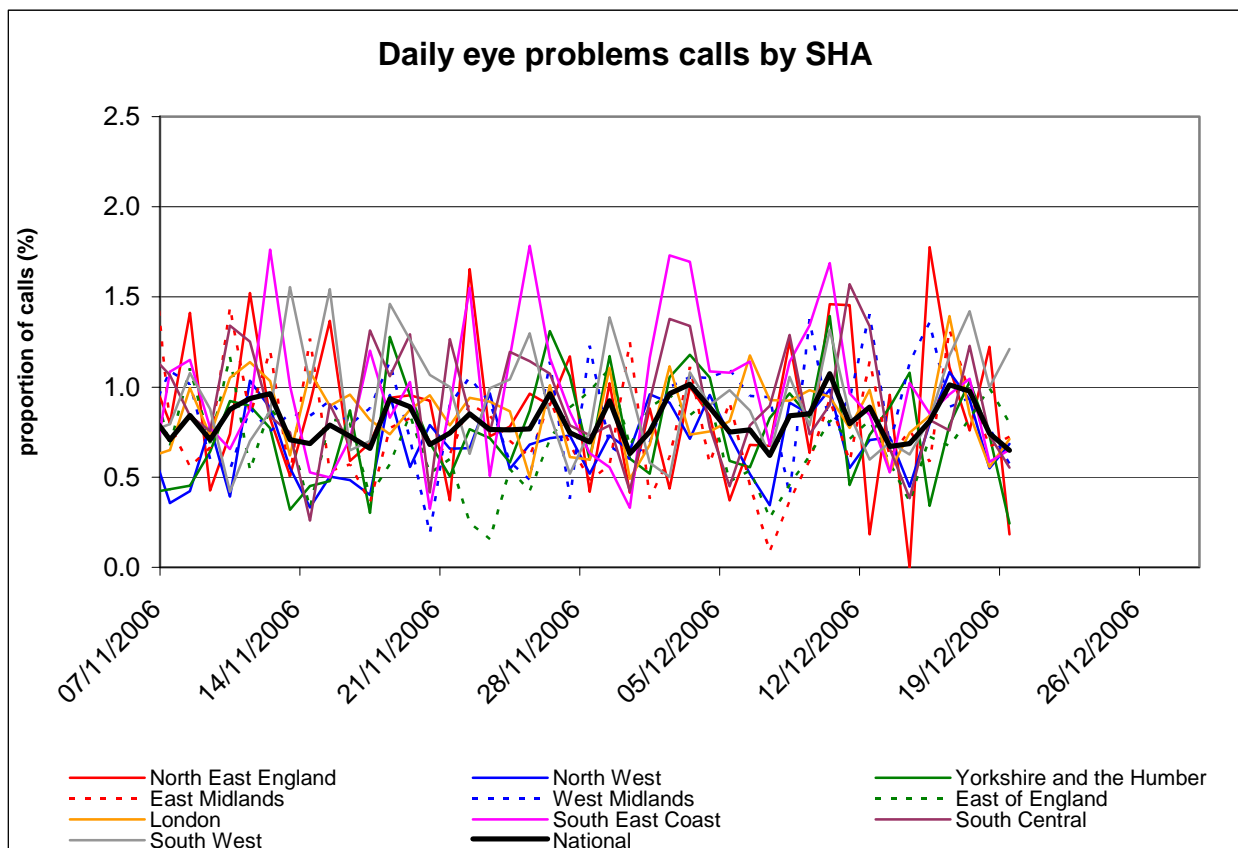
FEVER - SHA specific calls (as a proportion of total calls): 2006



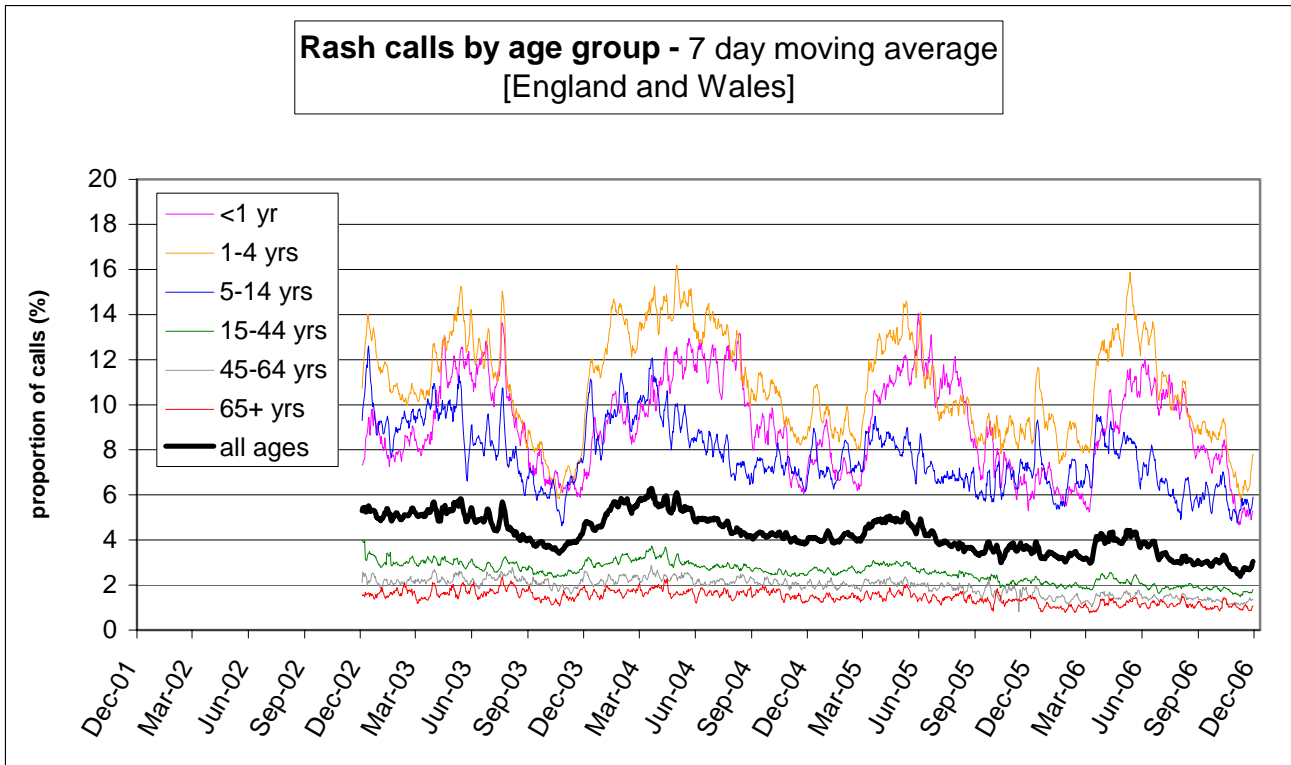
EYE PROBLEMS - Age group specific calls (as a proportion of total calls): 2002-2006



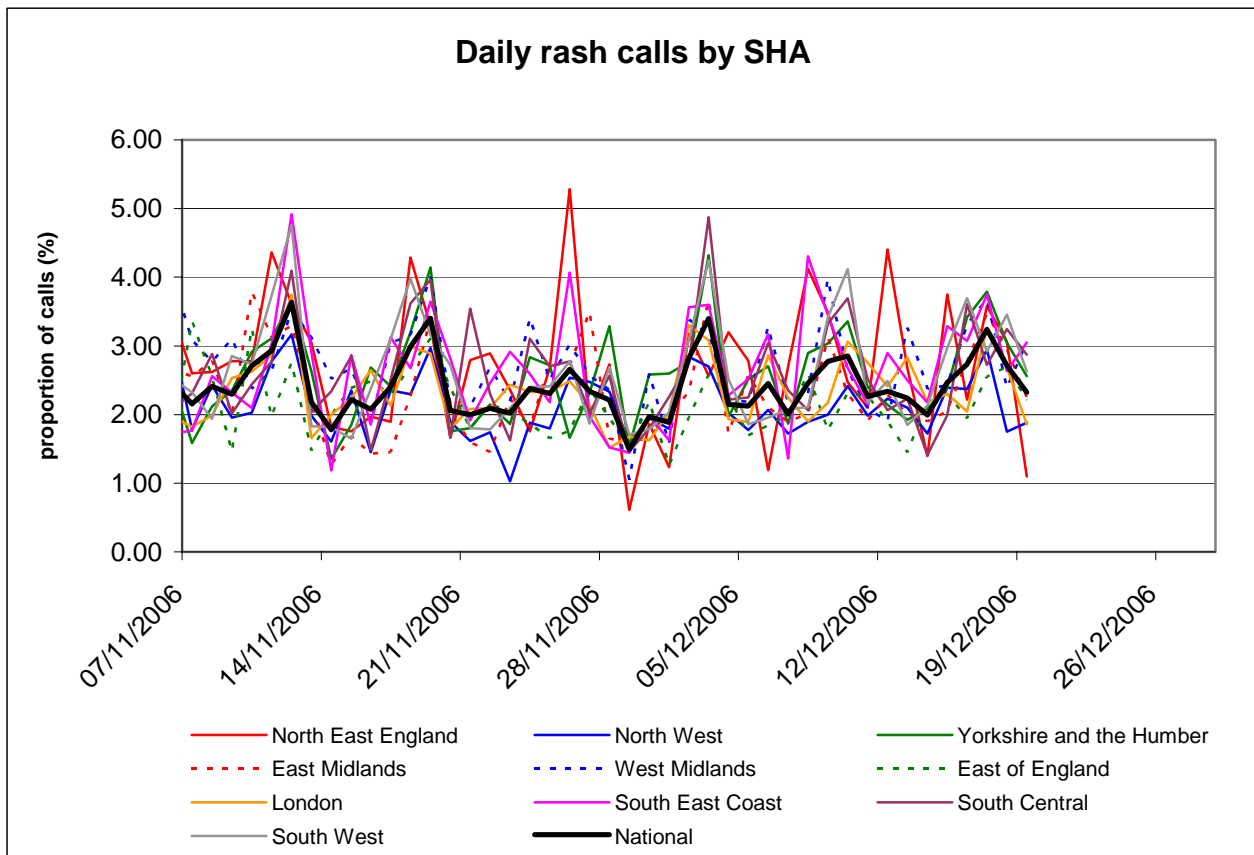
EYE PROBLEMS - SHA specific calls (as a proportion of total calls): 2006



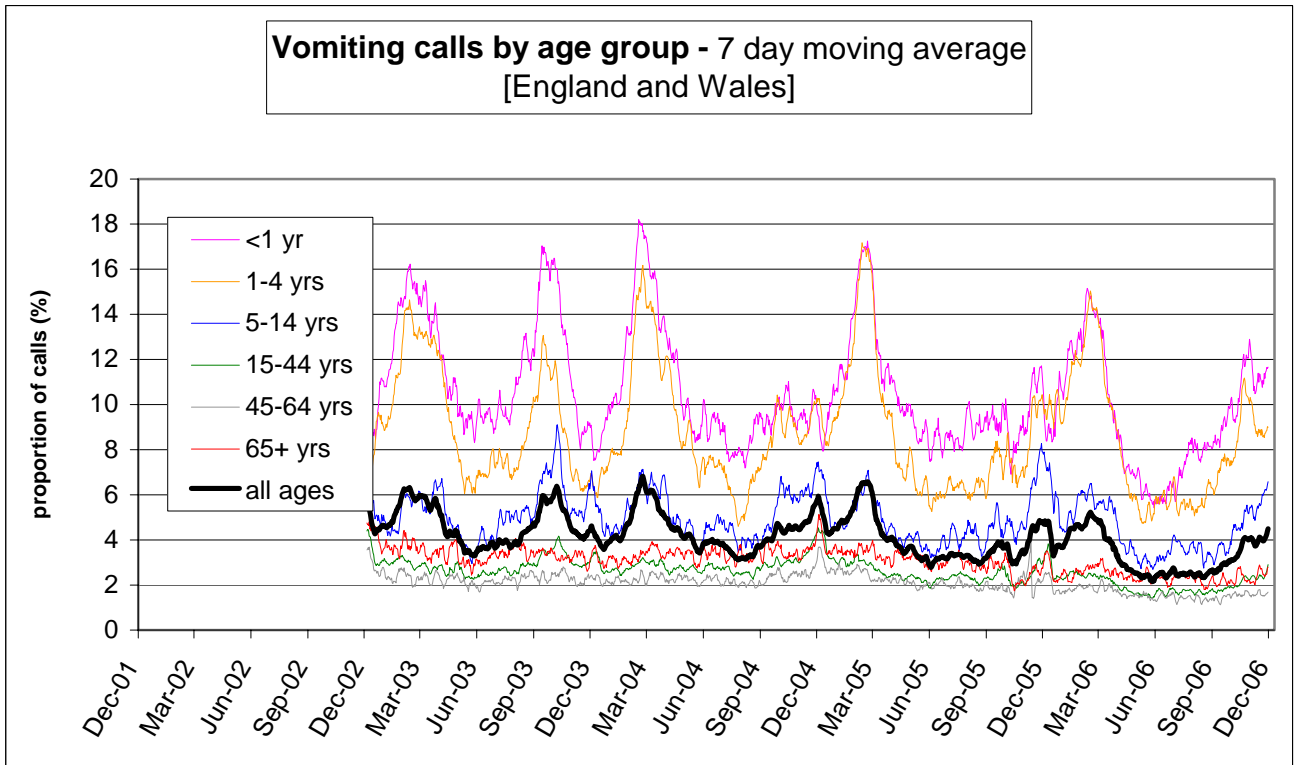
RASH - Age group specific calls (as a proportion of total calls): 2002-2006



RASH - SHA specific calls (as a proportion of total calls): 2006



VOMITING - Age group specific calls (as a proportion of total calls): 2002-2006



Vomiting - SHA specific calls (as a proportion of total calls): 2006

