

## Draft algorithm: WHO PANDEMIC ALERT PHASE 3

## Post-exposure prophylaxis (PEP) for contacts of confirmed human cases of avian influenza (H5N1) in the UK

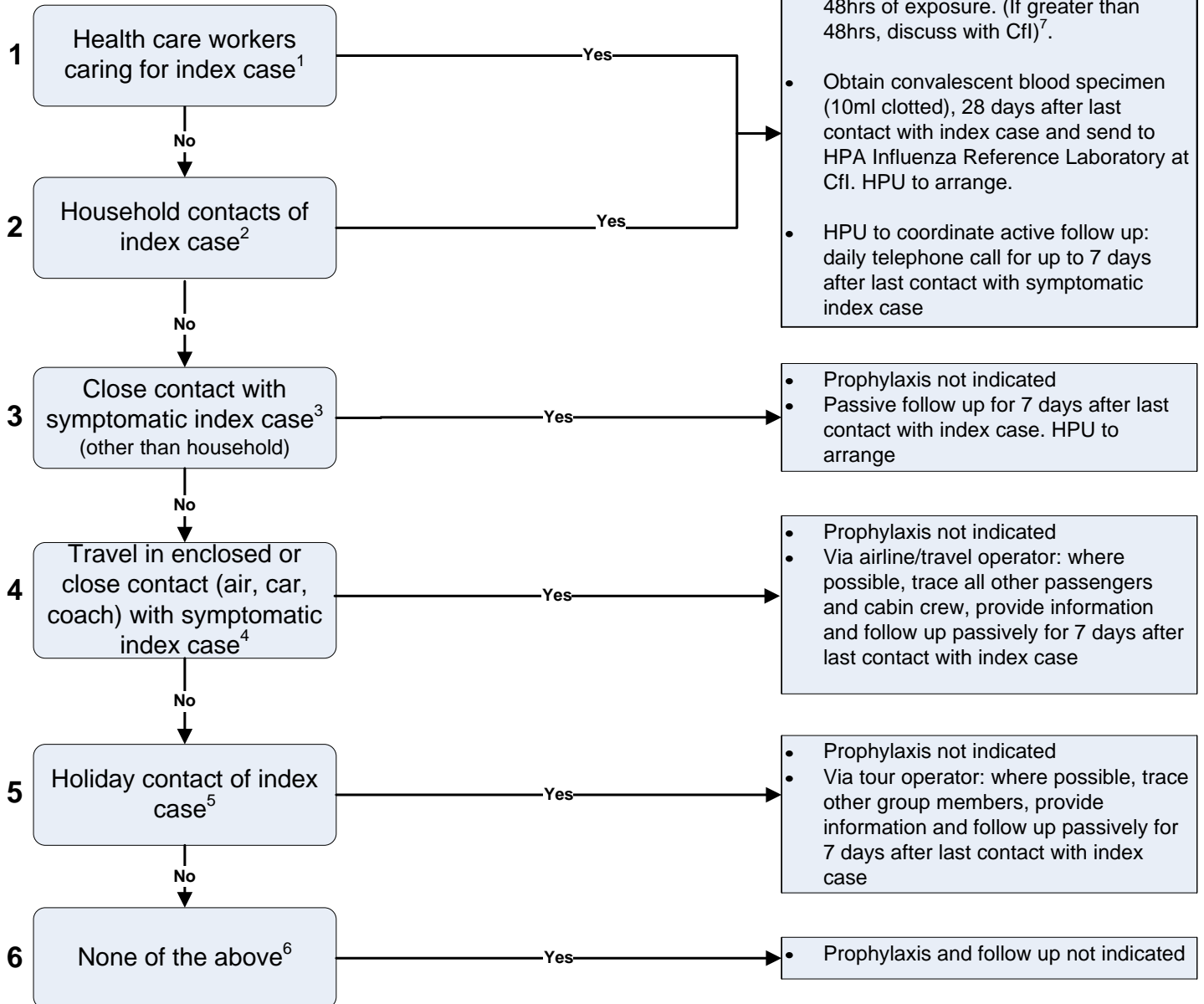


Revised on 30 August 2007. Please check HPA website for updates.

The local Health Protection Unit (HPU) **MUST** be notified immediately by the physician attending the index case. The local HPU **MUST** be involved in the assessment of contacts for post exposure prophylaxis (PEP) in community and hospital cases (liaison with infection control doctors as appropriate to setting). The local HPU will discuss with HPA Centre for Infections (Cfi) prior to initiation of PEP.

*Cascade for contact tracing, assessment and PEP by local HPU*

**CONTACT TYPE:**



\* Prophylactic dose of Oseltamivir (Tamiflu®) 75mg, 1 capsule per day for 10 days for adults (age >13 years old). Oseltamivir oral suspension, 1 dose per day for 10 days for children (1 < age < 13 years old) according to body weight [<15kg: 30mg once daily; 15kg < weight < 23kg: 45mg once daily; 23kg < weight < 40kg: 60mg once daily; >40kg: 75mg once daily (suspension or capsule)]

1. Health care worker engaged in clinical care or examination of symptomatic patient.

2. Household contact defined as any person sharing the same living accommodation or overnight stay while the index case is symptomatic.

3. Close contact defined as contact within a 1 metre distance for at least 2 hours (cumulative) with symptomatic index case.

4. Travel at a time when the index case was symptomatic. For non-enclosed travel (eg trains, ferries) follow rules on close contact (see box 3 and point 3 above). In circumstances where travel contacts cannot be identified (eg trains, buses etc) no further action is warranted.

5. Holiday contact ie: sharing same package holiday, travel tour or itinerary (risk of possible common exposures).

6. No action is required for casual contacts.

7. PEP need not be started if more than 7 days has elapsed between the last possible exposure and first opportunity to receive PEP, and the contact is no longer caring for or living with the affected individual.

**In case of uncertainty, discuss with Cfi Duty Doctor.**