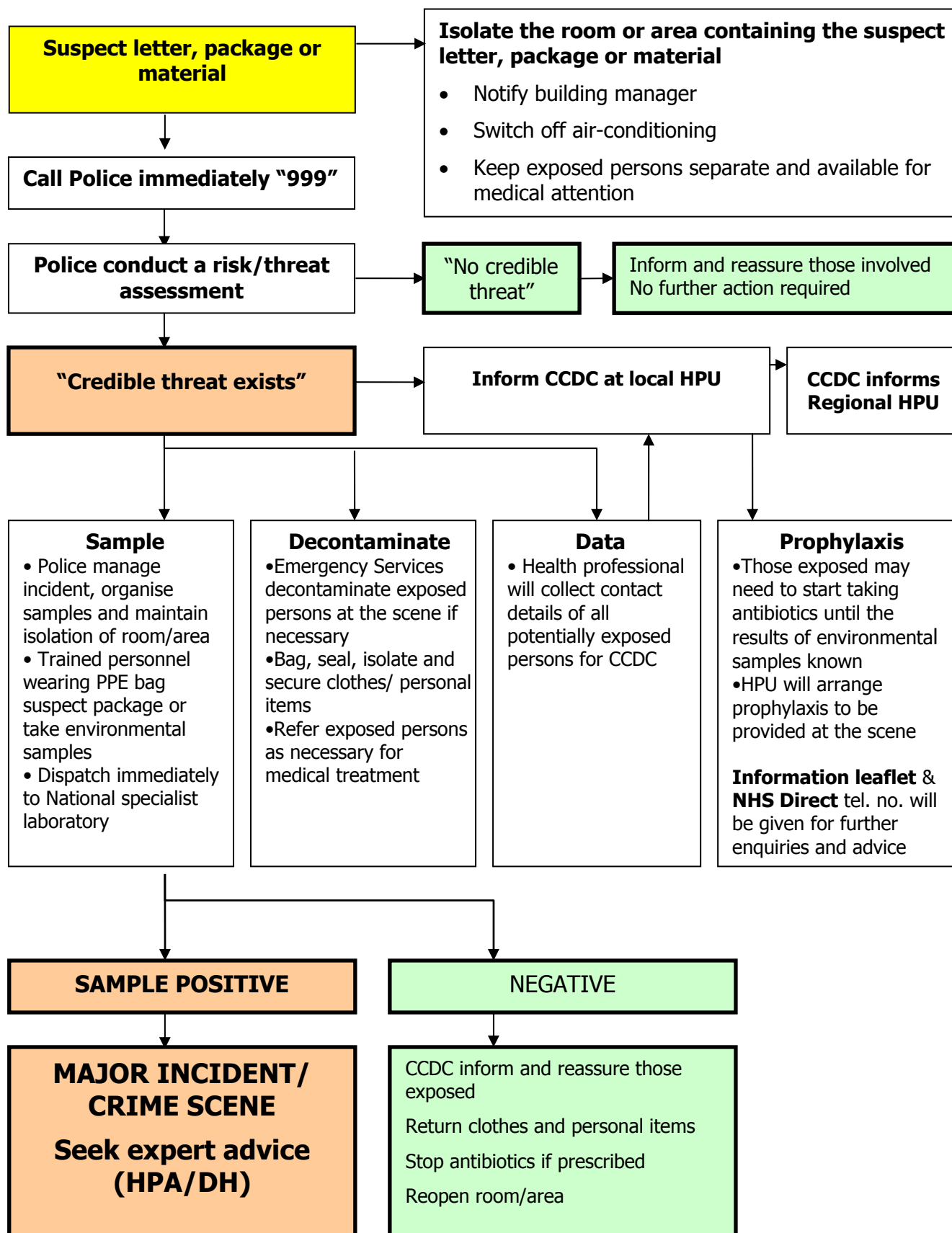


RESPONDING TO SUSPECT PACKAGES AND MATERIALS – ACTIONS TO BE TAKEN

Further details in: Guidelines for health professionals dealing with suspected packages and materials

http://www.hpa.org.uk/infections/topics_az/deliberate_release/menu.htm



Key:

CCDC=Consultant in Communicable Disease Control

DH=Department of Health

ERD=Emergency Response Division

HPA=Health Protection Agency

HPU=Health Protection Unit

PPE=Personal Protective Equipment