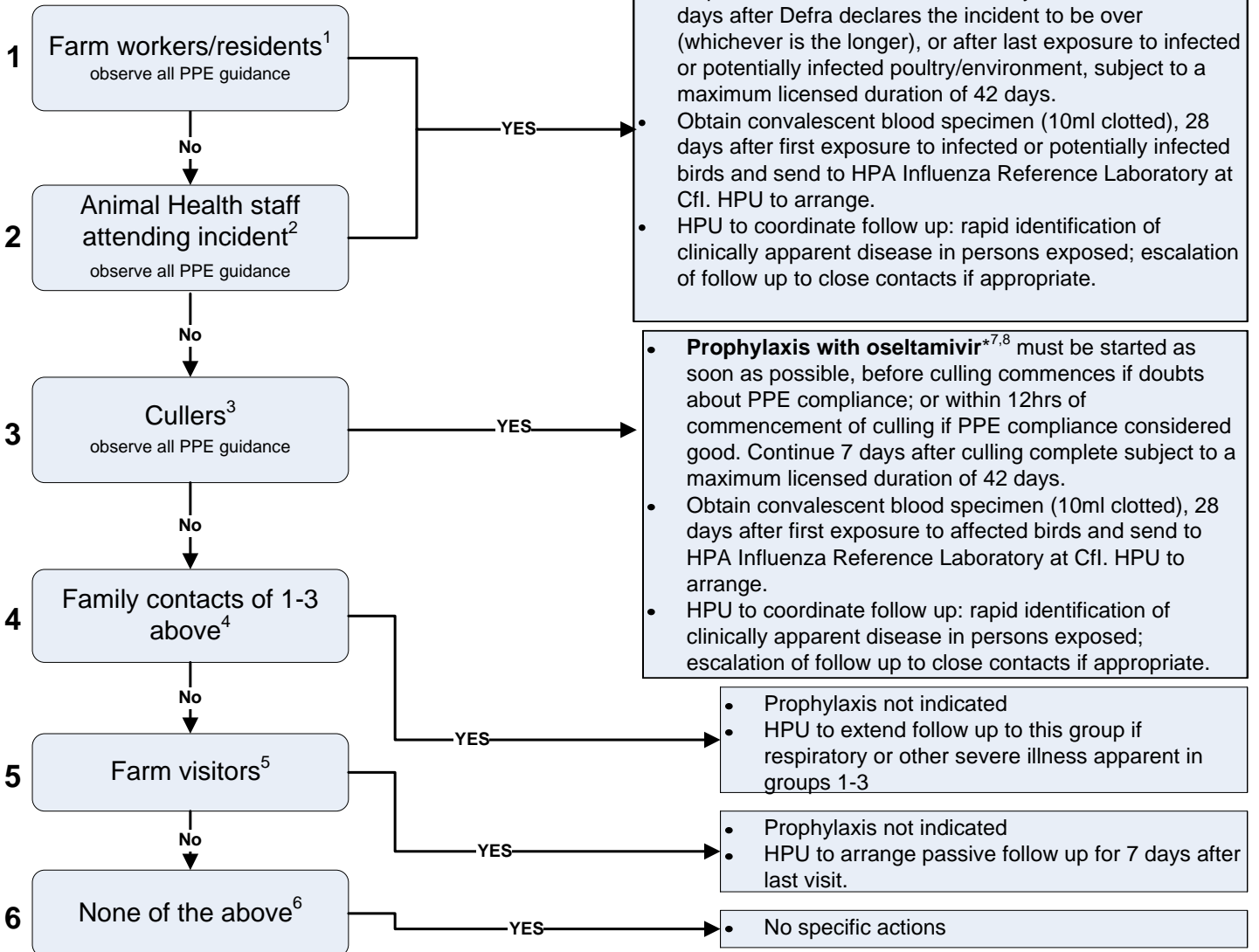


The local Health Protection Unit (HPU) MUST be notified immediately by Defra/Animal Health at Defra AMBER Level 3, at which point this guidance applies. The local HPU MUST be involved in the assessment of contacts for post exposure prophylaxis (PEP). The local HPU will discuss with HPA Centre for Infections (Cfi) prior to initiation of PEP.

Cascade for contact tracing, assessment and PEP by local HPU

CONTACT TYPE:



* Prophylactic dose of Oseltamivir (Tamiflu®) 75mg, 1 capsule per day for 10 days minimum for adults (age >13 years old) up to 42 days (maximum licensed duration). Oseltamivir oral suspension, 1 dose per day for 10 days for children (1<age<13years old) according to body weight [<15kg: 30mg once daily; 15kg<weight<23kg: 45mg once daily; 23kg<weight<40kg: 60mg once daily; >40kg: 75mg once daily (suspension or capsule)]

1. Persons of all ages who worked on, lived on or visited the affected premises and who came into close contact with poultry or poultry litter (faecal dust) in the 48 hours prior to onset of clinical signs in poultry, or at any time after this.
2. Animal Health staff engaged in examination of affected poultry, or onsite supervision of culling.
3. Persons employed specifically for culling duties associated with Defra response to the incident.
4. Family and household contacts of persons involved in the response, but who have not themselves visited the premises during the incident.
5. Persons who visited the farm in the 48 hours prior to onset of the incident, but did not come into close contact with poultry or poultry litter at any point.
6. No action is required for any other contacts.
7. Persons in whom oseltamivir PEP is recommended are also candidates to be offered seasonal influenza vaccine in due course. Although vaccine should be offered as soon as reasonably possible, this is a lower priority than rapid commencement of oseltamivir.
8. PEP need not be started if more than 7 days has elapsed between the last possible exposure and first opportunity to receive PEP, and the individual is no longer working in an at-risk area.

Close contact: less than 1 metre from poultry or their living accommodation (sheds, poultry houses, runs, cages etc)
 Personal protective equipment (PPE) advice is available at: <http://www.hse.gov.uk/biosafety/diseases/aisuspected.pdf>

In case of uncertainty, discuss with Cfl Duty Doctor.