



**Supplementary data tables of the Unlinked Anonymous
Prevalence Monitoring Programme: data to the end of 2009**

Surveillance Update: 2010

**Programme conducted by: Health Protection Agency, Health Protection Services
Health Protection Scotland**

Further Information:

Information on the Unlinked Anonymous Prevalence Monitoring Programme can be found at:
<http://www.hpa.org.uk/web/HPAweb&Page&HPAwebAutoListName/Page/1201094588821>

Information on the GUMANON survey can be found at:
http://www.hpa.org.uk/web/HPAweb&HPAwebStandard/HPAweb_C/1202115496235

Method:**Survey of Attendees at Genitourinary Medicine Clinics:**

This large scale serosurvey of GUM clinic attendees uses the unlinked anonymous technique on left-over specimens taken for syphilis tests to measure the HIV prevalence amongst all GUM attendees, including those not having voluntary confidential HIV test. The unlinked anonymous technique involves removing all identifying information from the specimens. Limited information on risk factors and whether voluntary confidential HIV testing was accepted is retained. In 2009 this survey was operational in 13 GUM clinics across the UK (six in London, and seven elsewhere in England, Wales and Northern Ireland). Men who have sex with men (MSM) who also inject drugs were included in the MSM exposure group in areas outside Scotland, as their HIV prevalence is closer to that in MSM than in men who inject drugs. For Scotland, MSM who also inject drugs were included in the injecting drug user group. In England, Wales and Northern Ireland, information on world region of birth is recorded. In Scotland, nationality is recorded.

Unlinked Anonymous Prevalence Monitoring Programme 2009

GUMANON Survey undertaken by:

***Department of microbiology and Epidemiology of Sexual Health and HIV, Centre for Infections,
Health Protection Agency***

Professor Noel Gill
Dr Emma Savage

Dr Kathy Lowndes
Ms Jacqueline Njoroge

***Sexually Transmitted and Blood Borne Viruses Laboratory, Specialist and Reference
Microbiology Division, Centre for Infections, Health Protection Agency***

Ms Sarah Nalukenge
Ms Eileen Quigley

Ms Elaine McKinney
Dr John Parry

Mr Gary Murphy
Ms Bharati Patel

Statistics Unit, Centre for Infections, Health Protection Agency

Mr Andre Charlett

Mr Tom Nichols

Health Protection Scotland

Mr Glenn Codere
Ms Louise Shaw

Professor David Goldberg
Dr Lesley Wallace

Ms Beth Cullen

Full Collaborators List

Abley J
Acharya C
Aarons E
Almeida M
Andrews N
Ashcroft T
Azadian B S
Ball D
Ball G
Birley H
Bittle H
Bowman C
Brown M
Carey P B
Carne C
Claxton A
Clow C
Coyle P
Davies D

Edgley B
Greene L
Harper C
Harrison I
Harte A
Hay P
Houghton H
Jalal H
King C
Kinghorn G
Kudesia G
Lang C
Larbi S
Laver S
Lawton M
L'esrange M
Leigh I
Leung T
Madonna S

Macrae M
Magee J
Maw R
Maxwell S
McCaughey C
McKernan S
McManus T
Mercey D
Mohamed A
Muir D
Murphy S
Nathan P M
Owen N
Payne S
Paxford-Jenkins R
Pickard G
Rice P
Rice S
Ross J

Rothburn M
Salmon M
Sankar K N
Sekar P
Shafi S
Smart D
Struthers K
Stempczyk M
Sullivan A
Sutehall G
Tenant-Flowers M
Tilsed C
Van Hagan A
Wade A
Walters A
Warren R
Watson L
Wilson P
Zuckerman M

SUPPLEMENTARY DATA TABLES

Overall tables:

Centres and districts contributing specimens each year: 1990-2009	Overall-1
Total number of specimens:1990-2009	Overall-2
Number of HIV-1 positive specimens: 1990-2009	Overall-3
Number of HIV-2 positive specimens: 1990-2009	Overall-4

Survey of genitourinary medicine clinic attendees:

Previously undiagnosed HIV infection:

All heterosexuals attending GUM clinics - prevalence of previously undiagnosed HIV infection, previously diagnosed HIV infection and overall HIV infection, England, Wales and Northern Ireland: 2000-2009	GUM-1a
All heterosexuals attending GUM clinics - prevalence of previously undiagnosed HIV infection, previously diagnosed HIV infection and overall HIV infection, Scotland: 2000-2008	GUM-1b
All heterosexuals attending GUM clinics - prevalence of previously undiagnosed HIV infection, by world region, England, Wales and Northern Ireland: 2000-2009	GUM-2
Men who have sex with men attending GUM clinics - prevalence of previously undiagnosed HIV infection, previously diagnosed HIV infection and overall HIV infection by age group, England, Wales and Northern Ireland: 2000-2009	GUM-3a
All men who have sex with men attending GUM clinics - prevalence of previously undiagnosed HIV infection, previously diagnosed HIV infection and overall HIV prevalence by age group, Scotland: 2000-2008	GUM-3b
Men who have sex with men attending GUM clinics - previously undiagnosed HIV infection by age group, England, Wales and Northern Ireland: 2000-2009	GUM-4a
Men who have sex with men attending GUM clinics - previously undiagnosed HIV infection by age group, Scotland:2000-2009	GUM-4b
GUM clinic attendees - HIV infected persons by diagnosis status, England, Wales and Northern Ireland: 2000-2009	GUM-5a
GUM clinic attendees - HIV infected persons by diagnosis status, Scotland: 2000-2008	GUM-5b
GUM clinic attendees - rate of previously undiagnosed HIV infection by category of STI diagnoses at clinic attendance, England, Wales and Northern Ireland: 2000-2009	GUM-6
GUM clinic attendees - rate of overall HIV infection by category of STI diagnoses at clinic attendance, United Kingdom: 2000-2009	GUM-7
GUM clinic attendees - knowledge of HIV status among HIV-infected persons with an acute STI by exposure category, England, Wales and Northern Ireland: 2000-2009	GUM-8
GUM clinic attendees - proportion of previously undiagnosed HIV-infected persons who remain undiagnosed, ratio of tests per new HIV diagnosis and number of further tests necessary to detect undiagnosed infections, in individuals with or without an acute STI	GUM-9a
GUM clinic attendees - uptake of voluntary confidential HIV tests among persons with or without an acute STI by HIV status, England, Wales and Northern Ireland: 2000-2009	GUM-9b
Heterosexuals attending GUM clinics - HIV diagnosis status of those attending with previously undiagnosed HIV infection by country of birth, England, Wales and Northern Ireland: 2000-2009	GUM-10

Overall HIV prevalence:

Men who have sex with men attending GUM clinics - overall HIV prevalence by age group, United Kingdom: 2000-2009	GUM-11
Heterosexuals attending GUM clinics - overall HIV prevalence by age group, London: 2000-2009	GUM-12
Heterosexuals attending GUM clinics - overall HIV prevalence by age group, England, Wales and Northern Ireland excluding London: 2000-2009	GUM-13
Heterosexuals attending GUM clinics - overall HIV prevalence by age group, Scotland: 2000-2009	GUM-14
GUM clinic attendees - overall HIV prevalence by world region of birth, England, Wales and Northern Ireland: 2008 and 2009 combined	GUM-15
GUM clinic attendees - overall HIV prevalence by nationality, Scotland: 2007 and 2008 combined	GUM-16
Injecting Drug Users attending GUM clinics - overall HIV prevalence, United Kingdom 2000-2009	GUM-17

Uptake and outcome of HIV test:

Men who have sex with men attending GUM clinics - previously undiagnosed HIV prevalence by clinical diagnosis, England, Wales and Northern Ireland: 2000-2009	GUM-18
Men who have sex with men attending GUM clinics - previously undiagnosed HIV prevalence by clinical diagnosis, Scotland: 2000-2008	GUM-19
Men who have sex with men attending GUM clinics – proportion (%) having a voluntary confidential HIV test at the clinic visit, England, Wales and Northern Ireland: 2003-2009	GUM-20
Men who have sex with men attending GUM clinics – proportion (%) of previously undiagnosed HIV infections remaining undiagnosed after the clinic visit, England, Wales and Northern Ireland: 2003-2009	GUM-21
Heterosexuals attending GUM clinics – proportion (%) having voluntary confidential HIV tests at the clinic visit, England, Wales and Northern Ireland: 2003-2009	GUM-22
Heterosexuals attending GUM clinics – proportion (%) of previously undiagnosed HIV infections remaining undiagnosed after the clinic visit, England, Wales and Northern Ireland: 2003-2009	GUM-23

Overall-1: Centres contributing specimens each year: 1990-2009

Survey	1990	1991	1992	1993	1994	1995	1996	1997	1998	1999	2000	2001	2002	2003	2004	2005	2006	2007	2008	2009 [†]
Genitourinary medicine clinics[†]	6	10	19	21	23	23	24	25	26	27	27	24	26	27	27	16	16	15	15	13
(London)	(2)	(2)	(5)	(6)	(7)	(7)	(7)	(7)	(7)	(7)	(7)	(7)	(7)	(8)	(8)	(7)	(8)	(7)	(7)	(6)
(Elsewhere in England, Wales and Northern Ireland)	(4)	(4)	(7)	(7)	(8)	(8)	(8)	(8)	(8)	(8)	(8)	(8)	(8)	(8)	(8)	(8)	(7)	(7)	(7)	(7)
(Scotland)	-	(4)	(7)	(8)	(8)	(8)	(9)	(10)	(11)	(12)	(12)	(9)	(11)	(11)	(11)	(1)	(1)	(1)	(1)	-

[†] Survey co-ordinated by CFI and HPS.

[‡] Study terminated in Scotland in 2008.

Overall-2: Total number of specimens: 1990-2009

Survey	Year															TOTAL
	1990-1995	1996	1997	1998	1999	2000	2001	2002	2003	2004	2005	2006	2007	2008	2009	
Genitourinary Medicine [†]	292682	77521	82234	79466	76633	79168	91908	100169	107998	112759	107999	105773	119422	123,896	82227	1639855

^{*} Does not include specimens tested without demographic data.

[‡] Survey collects data from sentinel GUM clinics across the UK. In 2009 it included data from six GUM clinics in London and seven elsewhere in the UK. One major centre in London did not participate in 2009. Survey terminated in Scotland in 2008

Overall-3: Number of HIV-1* positive specimens: 1990-2009

Survey	Year															TOTAL
	1990-1995	1996	1997	1998	1999	2000	2001	2002	2003	2004	2005	2006	2007	2008	2009	
Genitourinary Medicine ^{†‡}	4759	893	857	798	671	923	2080	3172	2334	2045	2038	2800	6,341	6,699	1,356	36410

^{*} Includes specimens that are positive for both HIV-1 and HIV-2:

(In the GUM survey there was 1 dual positive specimen per year in 1990, 1991, 1992, 1995, 1996, 2005, 2006 and 2009, 2 dual positive specimens per year in 1997, 1999, 2000, 2002, 2004 and 2007, 3 in 2001, 4 in 2003 and 6 in 2008).

[†] Does not include specimens tested without demographic data.

[‡] Survey collects data from sentinel GUM clinics across the UK. In 2009 it included data from six GUM clinics in London and seven elsewhere in the UK. One major centre in London did not participate in 2009. Survey terminated in Scotland in 2008

Overall-4: Number of HIV-2* positive specimens: 1990-2009

Survey	Year															TOTAL
	1990-1995	1996	1997	1998	1999	2000	2001	2002	2003	2004	2005	2006 [§]	2007	2008	2009	
Genitourinary Medicine ^{†‡}	11	2	5	2	4	6	8	6	8	7	4	8	9	8	8	96

^{*} Includes specimens that are positive for both HIV-1 and HIV-2:

(In the GUM survey there was 1 dual positive specimen per year in 1990, 1991, 1992, 1995, 1996, 2005, 2006 and 2009, 2 dual positive specimens per year in 1997, 1999, 2000, 2002, 2004 and 2007, 3 in 2001, 4 in 2003 and 6 in 2008).

[†] Does not include specimens tested without demographic data.

[‡] Survey collects data from sentinel GUM clinics across the UK. In 2009 it included data from six GUM clinics in London and seven elsewhere in the UK. One major centre in London did not participate in 2009. Survey terminated in Scotland in 2008

GUM-1a : All heterosexuals attending GUM clinics - prevalence* of previously undiagnosed† HIV infection, previously diagnosed‡ HIV infection and overall HIV infection

England, Wales and Northern Ireland: 2000-2009

Area	Year	Previously undiagnosed† HIV	Previously diagnosed‡ HIV	Overall HIV infection
Sex				
London				
Men	2000	0.63 (78 / 12389)	0.26 (32 / 12421)	0.89 (110 / 12421)
	2001	0.77 (116 / 15019)	0.58 (88 / 15107)	1.35 (204 / 15107)
	2002	1.02 (175 / 17203)	1.76 (309 / 17512)	2.76 (484 / 17512)
	2003	0.76 (126 / 16543)	1.03 (173 / 16716)	1.79 (299 / 16716)
	2004	0.80 (138 / 17160)	0.67 (115 / 17275)	1.46 (253 / 17275)
	2005	0.59 (102 / 17161)	0.45 (78 / 17239)	1.04 (180 / 17239)
	2006	0.57 (96 / 16892)	0.62 (106 / 16998)	1.19 (202 / 16998)
	2007	0.61 (114 / 18828)	1.97 (378 / 19206)	2.56 (492 / 19206)
	2008	0.56 (92 / 16415)	2.93 (495 / 16910)	3.47 (587 / 16910)
	2009	0.58 (72 / 12504)	0.47 (59 / 12563)	1.04 (131 / 12563)
Women	2000	0.61 (100 / 16327)	0.38 (62 / 16389)	0.99 (162 / 16389)
	2001	0.76 (161 / 21313)	0.61 (130 / 21443)	1.36 (291 / 21443)
	2002	0.71 (166 / 23346)	0.95 (224 / 23570)	1.65 (390 / 23570)
	2003	0.66 (159 / 24114)	0.84 (205 / 24319)	1.50 (364 / 24319)
	2004	0.72 (167 / 23298)	0.54 (127 / 23425)	1.26 (294 / 23425)
	2005	0.56 (137 / 24420)	0.49 (120 / 24540)	1.05 (257 / 24540)
	2006	0.57 (147 / 25608)	0.59 (152 / 25760)	1.16 (299 / 25760)
	2007	0.68 (198 / 29247)	1.95 (582 / 29829)	2.61 (780 / 29829)
	2008	0.67 (169 / 25382)	3.52 (926 / 26308)	4.16 (1095 / 26308)
	2009	0.33 (59 / 17960)	0.53 (95 / 18055)	0.85 (154 / 18055)
Outside London				
Men	2000	0.12 (20 / 16401)	0.04 (6 / 16407)	0.16 (26 / 16407)
	2001	0.12 (21 / 16849)	0.02 (4 / 16853)	0.15 (25 / 16853)
	2002	0.29 (50 / 17407)	0.07 (12 / 17419)	0.36 (62 / 17419)
	2003	0.32 (66 / 20852)	0.10 (20 / 20872)	0.41 (86 / 20872)
	2004	0.32 (73 / 22958)	0.13 (30 / 22988)	0.45 (103 / 22988)
	2005	0.19 (48 / 25133)	0.12 (30 / 25163)	0.31 (78 / 25163)
	2006	0.16 (39 / 23693)	0.18 (43 / 23736)	0.35 (82 / 23736)
	2007	0.14 (36 / 25941)	0.25 (64 / 26005)	0.38 (100 / 26005)
	2008	0.16 (42 / 26528)	0.29 (77 / 26605)	0.45 (119 / 26605)
	2009	0.12 (23 / 19983)	0.36 (72 / 20055)	0.47 (95 / 20055)
Women	2000	0.11 (18 / 15969)	0.02 (3 / 15972)	0.13 (21 / 15972)
	2001	0.17 (28 / 16687)	0.02 (3 / 16690)	0.19 (31 / 16690)
	2002	0.32 (57 / 17768)	0.14 (25 / 17793)	0.46 (82 / 17793)
	2003	0.37 (79 / 21082)	0.13 (27 / 21109)	0.50 (106 / 21109)
	2004	0.37 (86 / 23344)	0.15 (34 / 23378)	0.51 (120 / 23378)
	2005	0.33 (84 / 25430)	0.12 (31 / 25461)	0.45 (115 / 25461)
	2006	0.26 (62 / 23461)	0.32 (75 / 23536)	0.58 (137 / 23536)
	2007	0.18 (42 / 23704)	0.31 (74 / 23778)	0.49 (116 / 23778)
	2008	0.15 (40 / 27511)	0.29 (81 / 27592)	0.44 (121 / 27592)
	2009	0.13 (26 / 20522)	0.44 (90 / 20612)	0.56 (116 / 20612)

* HIV prevalence=number HIV-1 positive/total tested.

† Previously undiagnosed HIV infection includes those diagnosed at the clinic attendance and those remaining undiagnosed, but excludes those diagnosed earlier.

‡ Previously diagnosed HIV infection includes those whose HIV infection was diagnosed prior to the clinic attendance.

GUM-1b: All heterosexuals attending GUM clinics - prevalence(%)* of previously undiagnosed HIV infection, previously diagnosed[‡] HIV infection and overall HIV infection

Scotland§: 2000 to 2009

Year		Previously undiagnosed [†] HIV infection (%)	Previously diagnosed [‡] HIV infection (%)	Overall HIV infection (%)
Men	2000	0.14% (7 / 4909)	0.02% (1 / 4910)	0.16% (8 / 4910)
	2001	0.07% (4 / 5518)	0.00% (0 / 5518)	0.07% (4 / 5518)
	2002	0.13% (8 / 6083)	0.05% (3 / 6086)	0.18% (11 / 6086)
	2003	0.06% (4 / 6746)	0.04% (3 / 6749)	0.10% (7 / 6749)
	2004	0.15% (11 / 7397)	0.07% (5 / 7402)	0.22% (16 / 7402)
	2005	0.10% (2 / 2009)	0.10% (2 / 2011)	0.20% (4 / 2011)
	2006	0.16% (4 / 2453)	0.04% (1 / 2454)	0.20% (5 / 2454)
	2007	0.43% (9 / 2074)	0.00% (0 / 2074)	0.43% (9 / 2074)
	2008	0.16% (4 / 2554)	0.08% (2 / 2556)	0.23% (6 / 2556)
	2009	N/A	N/A	N/A
Women	2000	0.11% (4 / 3711)	0.05% (2 / 3713)	0.16% (6 / 3713)
	2001	0.11% (5 / 4427)	0.05% (2 / 4429)	0.16% (7 / 4429)
	2002	0.30% (14 / 4732)	0.06% (3 / 4735)	0.36% (17 / 4735)
	2003	0.17% (9 / 5204)	0.06% (3 / 5207)	0.23% (12 / 5207)
	2004	0.21% (12 / 5802)	0.12% (7 / 5809)	0.33% (19 / 5809)
	2005	0.19% (3 / 1545)	0.00% (0 / 1545)	0.13% (2 / 1545)
	2006	0.17% (3 / 1800)	0.11% (2 / 1802)	0.22% (4 / 1802)
	2007	0.16% (3 / 1849)	0.11% (2 / 1851)	0.27% (5 / 1851)
	2008	0.25% (6 / 2387)	0.00% (0 / 2387)	0.25% (6 / 2387)
	2009	N/A	N/A	N/A

* HIV prevalence (number HIV-1 positive/total tested) is given as a percentage.

† Previously undiagnosed HIV infection includes those diagnosed at the clinic attendance and those remaining undiagnosed, but excludes those diagnosed earlier.

‡ Previously diagnosed HIV infection includes those whose HIV infection was diagnosed prior to the clinic attendance

§ Between 2002 and 2004, clinic data from Edinburgh has been excluded. From 2005, data is derived from one clinic in Glasgow.

N/A Not available. Study terminated in Scotland in 2008.

GUM-2: All heterosexuals attending GUM clinics - prevalence* of previously undiagnosed HIV infection by world region

England, Wales and Northern Ireland: 2000-2009

Area Gender	Year	UK-born			Sub-Saharan Africa-born			Total heterosexual GUM clinic attendees [‡]		
London Men	2000	0.31	(21 / 6818)	2.61	(33 / 1265)	0.63	(78 / 12389)			
	2001	0.43	(35 / 8136)	3.41	(55 / 1613)	0.77	(116 / 15019)			
	2002	0.61	(55 / 9041)	3.27	(59 / 1805)	1.02	(175 / 17203)			
	2003	0.46	(41 / 9008)	2.83	(51 / 1799)	0.76	(126 / 16543)			
	2004	0.52	(49 / 9427)	2.12	(42 / 1981)	0.80	(138 / 17160)			
	2005	0.35	(33 / 9481)	2.10	(40 / 1905)	0.59	(102 / 17161)			
	2006	0.36	(33 / 9167)	1.61	(31 / 1923)	0.57	(96 / 16892)			
	2007	0.46	(46 / 9984)	1.43	(34 / 2370)	0.61	(114 / 18828)			
	2008	0.33	(28 / 8467)	1.65	(31 / 1877)	0.56	(92 / 16415)			
	2009	0.34	(24 / 7108)	1.93	(27 / 1396)	0.58	(72 / 12504)			
Women	2000	0.21	(18 / 8631)	4.68	(66 / 1409)	0.61	(100 / 16327)			
	2001	0.28	(31 / 10983)	5.04	(91 / 1804)	0.76	(161 / 21313)			
	2002	0.20	(24 / 11971)	5.24	(104 / 1985)	0.71	(166 / 23346)			
	2003	0.23	(29 / 12773)	4.67	(101 / 2165)	0.66	(159 / 24114)			
	2004	0.40	(49 / 12275)	3.11	(76 / 2442)	0.72	(167 / 23298)			
	2005	0.26	(34 / 12936)	2.86	(66 / 2304)	0.56	(137 / 24420)			
	2006	0.30	(39 / 13198)	2.60	(64 / 2464)	0.57	(147 / 25608)			
	2007	0.36	(54 / 14926)	2.76	(84 / 3041)	0.68	(198 / 29247)			
	2008	0.40	(50 / 12470)	2.31	(54 / 2337)	0.67	(169 / 25382)			
	2009	0.25	(23 / 9020)	0.83	(14 / 1695)	0.33	(59 / 17960)			
Outside London Men	2000	0.07	(10 / 14846)	2.47	(4 / 162)	0.12	(20 / 16401)			
	2001	0.07	(11 / 15073)	2.72	(7 / 257)	0.12	(21 / 16849)			
	2002	0.12	(18 / 15195)	6.93	(28 / 404)	0.29	(50 / 17407)			
	2003	0.14	(26 / 17982)	6.09	(33 / 542)	0.32	(66 / 20852)			
	2004	0.12	(24 / 19974)	5.81	(39 / 671)	0.32	(73 / 22958)			
	2005	0.09	(20 / 21660)	3.21	(24 / 747)	0.19	(48 / 25133)			
	2006	0.09	(19 / 20351)	1.66	(12 / 723)	0.16	(39 / 23693)			
	2007	0.08	(17 / 22041)	2.03	(16 / 789)	0.14	(36 / 25941)			
	2008	0.11	(25 / 22535)	1.57	(14 / 889)	0.16	(42 / 26528)			
	2009	0.09	(15 / 17600)	0.35	(2 / 576)	0.12	(23 / 19983)			
Women	2000	0.05	(7 / 14677)	7.23	(6 / 83)	0.11	(18 / 15969)			
	2001	0.07	(11 / 15410)	8.48	(14 / 165)	0.17	(28 / 16687)			
	2002	0.11	(17 / 16032)	9.50	(34 / 358)	0.32	(57 / 17768)			
	2003	0.10	(19 / 18828)	10.57	(50 / 473)	0.37	(79 / 21082)			
	2004	0.12	(26 / 20954)	8.31	(52 / 626)	0.37	(86 / 23344)			
	2005	0.10	(23 / 22521)	7.28	(52 / 714)	0.33	(84 / 25430)			
	2006	0.10	(21 / 20494)	6.39	(40 / 626)	0.26	(62 / 23461)			
	2007	0.06	(12 / 20767)	4.11	(26 / 632)	0.18	(42 / 23704)			
	2008	0.08	(20 / 24116)	2.45	(18 / 734)	0.15	(40 / 27511)			
	2009	0.07	(12 / 18455)	2.37	(11 / 465)	0.13	(26 / 20522)			

* HIV prevalence=number HIV-1 positive/total tested.

† Previously undiagnosed HIV infection includes those diagnosed at the clinic attendance and those remaining undiagnosed, but excludes those diagnosed earlier.

‡ Includes attendees for whom country of birth was not reported.

GUM-3a: Men who have sex with men attending GUM clinics - prevalence* of previously undiagnosed[†] HIV infection, previously diagnosed[‡] HIV infection and overall HIV infection by age group

England, Wales and Northern Ireland: 2000-2009

Area Age Group	Year	Previously undiagnosed [†] HIV infection		Previously diagnosed [‡] HIV infection		Overall HIV infection	
London							
< 25	2000	3.0	(15 / 498)	1.8	(9 / 507)	4.7	(24 / 507)
	2001	4.0	(24 / 595)	3.1	(19 / 614)	7.0	(43 / 614)
	2002	4.0	(27 / 673)	5.2	(37 / 710)	9.0	(64 / 710)
	2003	2.9	(22 / 758)	4.1	(32 / 790)	6.8	(54 / 790)
	2004	2.9	(20 / 685)	2.7	(19 / 704)	5.5	(39 / 704)
	2005	1.6	(10 / 609)	3.6	(23 / 632)	5.2	(33 / 632)
	2006	2.6	(19 / 733)	3.9	(30 / 763)	6.4	(49 / 763)
	2007	2.1	(17 / 825)	6.1	(54 / 879)	8.1	(71 / 879)
	2008	2.5	(19 / 771)	9.3	(79 / 850)	11.5	(98 / 850)
	2009	3.6	(9 / 249)	2.4	(6 / 255)	5.9	(15 / 255)
All ages	2000	4.8	(192 / 3984)	6.2	(262 / 4246)	10.7	(454 / 4246)
	2001	5.2	(255 / 4898)	10.9	(597 / 5495)	15.5	(852 / 5495)
	2002	5.4	(284 / 5245)	21.9	(1469 / 6714)	26.1	(1753 / 6714)
	2003	5.2	(269 / 5182)	15.8	(974 / 6156)	20.2	(1243 / 6156)
	2004	4.7	(207 / 4437)	14.8	(769 / 5206)	18.7	(976 / 5206)
	2005	3.8	(168 / 4474)	17.3	(939 / 5413)	20.5	(1107 / 5413)
	2006	4.5	(236 / 5298)	19.7	(1299 / 6597)	23.3	(1535 / 6597)
	2007	4.2	(254 / 6078)	38.5	(3802 / 9880)	41.1	(4056 / 9880)
	2008	3.8	(213 / 5658)	38.5	(3541 / 9199)	40.8	(3754 / 9199)
	2009	3.3	(73 / 2236)	8.9	(219 / 2455)	11.9	(292 / 2455)
Outside London							
< 25	2000	0.4	(2 / 496)	0.2	(1 / 497)	0.6	(3 / 497)
	2001	0.9	(5 / 562)	0.2	(1 / 563)	1.1	(6 / 563)
	2002	0.8	(5 / 633)	0.5	(3 / 636)	1.3	(8 / 636)
	2003	1.6	(13 / 813)	0.1	(1 / 814)	1.7	(14 / 814)
	2004	1.2	(12 / 988)	1.2	(12 / 1000)	2.4	(24 / 1000)
	2005	1.4	(14 / 1033)	0.6	(6 / 1039)	1.9	(20 / 1039)
	2006	1.8	(19 / 1074)	1.6	(17 / 1091)	3.3	(36 / 1091)
	2007	1.4	(17 / 1234)	1.6	(20 / 1254)	3.0	(37 / 1254)
	2008	0.9	(11 / 1212)	1.5	(19 / 1231)	2.4	(30 / 1231)
	2009	0.6	(5 / 842)	1.4	(12 / 854)	2.0	(17 / 854)
All ages	2000	1.8	(32 / 1799)	0.7	(12 / 1811)	2.4	(44 / 1811)
	2001	1.8	(35 / 1973)	0.9	(17 / 1990)	2.6	(52 / 1990)
	2002	2.4	(53 / 2190)	1.4	(30 / 2220)	3.7	(83 / 2220)
	2003	2.1	(56 / 2669)	1.6	(43 / 2712)	3.7	(99 / 2712)
	2004	2.5	(77 / 3028)	2.2	(68 / 3096)	4.7	(145 / 3096)
	2005	2.6	(83 / 3229)	3.3	(111 / 3340)	5.8	(194 / 3340)
	2006	3.2	(106 / 3302)	7.2	(255 / 3557)	10.1	(361 / 3557)
	2007	2.4	(87 / 3605)	8.8	(350 / 3955)	11.0	(437 / 3955)
	2008	1.8	(64 / 3463)	9.7	(373 / 3836)	11.4	(437 / 3836)
	2009	1.7	(46 / 2689)	11.5	(350 / 3039)	13.0	(396 / 3039)

* HIV prevalence (number HIV-1 positive/total tested) is given as a percentage.

[†] Previously undiagnosed HIV infection includes those diagnosed at the clinic attendance and those remaining undiagnosed, but excludes those diagnosed earlier.

[‡] Previously diagnosed HIV infection includes those whose HIV infection was diagnosed prior to the clinic attendance.

GUM-3b: All Men who have sex with men attending GUM clinics - prevalence* of previously undiagnosed[†] HIV infection, previously diagnosed HIV infection and overall HIV prevalence by age group

Scotland[§] - 2000 to 2009

Age Group	Year	Previously undiagnosed [†] HIV infection (%)	Previously diagnosed [‡] HIV infection (%)	Overall HIV infection (%)
<25	2000	0.00 (0 / 213)	1.84 (4 / 217)	1.84 (4 / 217)
	2001	0.39 (1 / 258)	0.77 (2 / 260)	1.15 (3 / 260)
	2002	0.70 (2 / 286)	0.69 (2 / 288)	1.39 (4 / 288)
	2003	0.85 (3 / 353)	0.00 (0 / 353)	0.85 (3 / 353)
	2004	0.69 (3 / 435)	0.46 (2 / 437)	1.14 (5 / 437)
	2005	1.22 (2 / 164)	0.61 (1 / 165)	0.02 (3 / 165)
	2006	1.08 (2 / 185)	0.00 (0 / 185)	0.01 (2 / 185)
	2007	2.07 (3 / 145)	1.36 (2 / 147)	0.03 (5 / 147)
	2008	0.90 (2 / 221)	0.45 (1 / 222)	1.35 (3 / 222)
	2009	N/A	N/A	N/A
All ages	2000	1.53 (13 / 850)	1.39 (12 / 862)	2.90 (25 / 862)
	2001	1.64 (16 / 978)	0.91 (9 / 987)	2.53 (25 / 987)
	2002	1.47 (16 / 1090)	1.09 (12 / 1102)	2.54 (28 / 1102)
	2003	1.84 (24 / 1303)	1.59 (21 / 1324)	3.40 (45 / 1324)
	2004	2.46 (37 / 1505)	1.83 (28 / 1533)	4.24 (65 / 1533)
	2005	3.54 (19 / 537)	1.26 (7 / 554)	4.69 (26 / 554)
	2006	2.92 (20 / 684)	2.01 (14 / 698)	4.87 (34 / 698)
	2007	2.23 (13 / 583)	2.19 (13 / 593)	4.38 (26 / 593)
	2008	2.33 (17 / 730)	2.14 (16 / 746)	4.42 (33 / 746)
	2009	N/A	N/A	N/A

* HIV prevalence (number HIV-1 positive/total tested) is given as a percentage.

† Previously undiagnosed HIV infection includes those diagnosed at the clinic attendance and those remaining undiagnosed, but excludes those diagnosed earlier.

‡ Previously diagnosed HIV infection includes those whose HIV infection was diagnosed prior to the clinic attendance.

§ Between 2002 and 2004, clinic data from Edinburgh has been excluded. From 2005, data is derived from one clinic in Glasgow.

N/A Not available. Study terminated in Scotland in 2008.

GUM-4: Men who have sex with men attending GUM clinics - previously undiagnosed HIV infection* by age group

England, Wales and Northern Ireland: 2000-2009

Area	Year	Age Group						All ages [†]
		<20	20-24	25-34	35-44	45+		
London	2000	3.7 (3 / 82)	2.9 (12 / 416)	4.9 (91 / 1846)	6.1 (64 / 1042)	3.6 (16 / 446)	4.9 (186 / 3832)	
	2001	1.6 (1 / 62)	4.3 (23 / 533)	4.2 (94 / 2262)	7.3 (102 / 1397)	5.6 (34 / 605)	5.2 (254 / 4859)	
	2002	3.9 (3 / 77)	4.0 (24 / 596)	4.1 (93 / 2269)	7.8 (124 / 1592)	5.2 (34 / 657)	5.4 (278 / 5191)	
	2003	2.3 (2 / 87)	3.0 (20 / 671)	4.9 (109 / 2205)	7.4 (115 / 1564)	3.4 (21 / 611)	5.2 (267 / 5138)	
	2004	4.5 (4 / 89)	2.7 (16 / 596)	4.3 (78 / 1805)	6.2 (80 / 1282)	4.5 (28 / 629)	4.7 (206 / 4401)	
	2005	1.3 (1 / 79)	1.7 (9 / 530)	2.9 (55 / 1900)	5.6 (75 / 1332)	4.1 (25 / 603)	3.7 (165 / 4444)	
	2006	3.6 (3 / 84)	2.5 (16 / 649)	3.9 (88 / 2265)	5.7 (87 / 1530)	4.5 (34 / 750)	4.3 (228 / 5278)	
	2007	2.5 (3 / 122)	2.0 (14 / 703)	3.4 (92 / 2693)	6.2 (103 / 1669)	4.6 (39 / 856)	4.2 (251 / 6043)	
	2008	7.1 (8 / 112)	1.7 (11 / 659)	3.9 (106 / 2730)	4.5 (61 / 1357)	3.0 (23 / 760)	3.7 (209 / 5618)	
	2009	3.4 (1 / 29)	3.6 (8 / 220)	2.0 (28 / 1407)	5.9 (21 / 357)	6.3 (13 / 205)	3.2 (71 / 2218)	
Outside London	2000	0.0 (0 / 149)	0.6 (2 / 347)	2.3 (15 / 648)	2.7 (11 / 409)	1.7 (4 / 236)	1.8 (32 / 1789)	
	2001	1.1 (2 / 177)	0.8 (3 / 385)	2.5 (17 / 688)	2.3 (10 / 440)	1.1 (3 / 276)	1.8 (35 / 1966)	
	2002	1.2 (2 / 165)	0.6 (3 / 468)	2.6 (19 / 740)	4.2 (21 / 496)	2.6 (8 / 310)	2.4 (53 / 2179)	
	2003	1.4 (3 / 216)	1.7 (10 / 597)	2.4 (21 / 858)	3.0 (18 / 607)	1.1 (4 / 369)	2.1 (56 / 2647)	
	2004	0.0 (0 / 254)	1.6 (12 / 734)	1.9 (18 / 926)	5.5 (36 / 651)	2.5 (11 / 447)	2.6 (77 / 3012)	
	2005	0.3 (1 / 288)	1.7 (13 / 745)	3.0 (31 / 1021)	3.5 (25 / 706)	2.7 (12 / 447)	2.6 (82 / 3207)	
	2006	1.2 (4 / 331)	2.0 (15 / 743)	3.8 (41 / 1069)	4.8 (33 / 681)	2.7 (12 / 450)	3.2 (105 / 3274)	
	2007	0.5 (2 / 389)	1.8 (15 / 845)	2.3 (26 / 1119)	3.8 (27 / 711)	3.2 (16 / 506)	2.4 (86 / 3570)	
	2008	0.5 (2 / 367)	1.1 (9 / 845)	2.2 (23 / 1051)	2.2 (14 / 648)	2.8 (15 / 535)	1.8 (63 / 3446)	
	2009	0.4 (1 / 229)	0.7 (4 / 613)	1.9 (18 / 931)	3.9 (19 / 492)	1.0 (4 / 399)	1.7 (46 / 2664)	

* Previously undiagnosed HIV infection includes those diagnosed at the clinic attendance and those remaining undiagnosed, but excludes those diagnosed earlier.

[†] Excludes those with age not reported.

GUM-4b: Men who have sex with men attending GUM clinics - previously undiagnosed HIV infection* by age group

Scotland: 1999-2008

Area	Year	Age Group					
		<20	20-24	25-34	35-44	45+	All ages [†]
Scotland	2000	0.0 (0 / 75)	0.0 (0 / 138)	1.3 (4 / 301)	3.7 (8 / 214)	0.9 (1 / 108)	1.6 (13 / 836)
	2001	0.0 (0 / 80)	0.6 (1 / 178)	2.5 (9 / 362)	1.7 (4 / 234)	1.8 (2 / 109)	1.7 (16 / 963)
	2002	0.0 (0 / 79)	1.0 (2 / 207)	0.8 (3 / 382)	2.6 (7 / 273)	2.9 (4 / 137)	1.5 (16 / 1078)
	2003	1.9 (2 / 103)	0.4 (1 / 250)	2.7 (12 / 442)	2.5 (8 / 323)	0.6 (1 / 156)	1.9 (24 / 1274)
	2004	0.0 (0 / 72)	1.2 (3 / 250)	3.8 (14 / 364)	4.1 (14 / 339)	2.4 (4 / 169)	2.9 (35 / 1194)
	2005	0.0 (0 / 41)	1.6 (2 / 123)	3.9 (6 / 153)	6.5 (9 / 138)	1.2 (1 / 84)	3.3 (18 / 539)
	2006	0.0 (0 / 42)	1.4 (2 / 143)	3.2 (7 / 219)	5.1 (9 / 175)	2.0 (2 / 100)	2.9 (20 / 679)
	2007	0.0 (0 / 42)	2.9 (3 / 103)	4.1 (8 / 194)	1.2 (2 / 161)	0.0 (0 / 80)	2.2 (13 / 580)
	2008	0.0 (0 / 52)	1.2 (2 / 169)	2.8 (7 / 246)	3.4 (5 / 145)	2.6 (3 / 115)	2.3 (17 / 727)
	2009	N/A	N/A	N/A	N/A	N/A	N/A

* Previously undiagnosed HIV infection includes those diagnosed at the clinic attendance and those remaining undiagnosed, but excludes those diagnosed earlier. A small proportion of specimens have insufficient sera to be included in the unlinked anonymous testing. This means that if the GUM Anon survey detects no individuals with undiagnosed HIV during a particular year, it is not possible to conclude that none of the individuals attending the GUM clinics during the year in question had an undiagnosed HIV infection.

[†]Excludes those with age not reported.

N/A Not available. Study terminated in Scotland in 2008.

GUM-5a: GUM clinic attendees - HIV infection by diagnosis status

England, Wales and Northern Ireland: 2000-2009

Area Exposure category		HIV infections					
		Previously diagnosed (%) [*]		New diagnosis at that visit (%) [†]		Undiagnosed after clinic visit (%) [‡]	
London							
MSM	2000	58	(262 / 454)	33	(64 / 192)	67	(128 / 192)
	2001	70	(597 / 852)	41	(104 / 255)	59	(151 / 255)
	2002	84	(1469 / 1753)	38	(108 / 284)	62	(176 / 284)
	2003	78	(974 / 1243)	46	(124 / 269)	54	(145 / 269)
	2004	79	(769 / 976)	54	(111 / 207)	46	(96 / 207)
	2005	85	(939 / 1107)	51	(85 / 168)	49	(83 / 168)
	2006	85	(1299 / 1535)	47	(110 / 236)	53	(126 / 236)
	2007	94	(3802 / 4056)	60	(153 / 254)	40	(101 / 254)
	2008	94	(3541 / 3754)	62	(133 / 213)	38	(80 / 213)
2009	75	(219 / 292)	56	(41 / 73)	44	(32 / 73)	
Heterosexual men	2000	29	(32 / 110)	54	(42 / 78)	46	(36 / 78)
	2001	43	(88 / 204)	51	(59 / 116)	49	(57 / 116)
	2002	64	(309 / 484)	55	(96 / 175)	45	(79 / 175)
	2003	58	(173 / 299)	53	(67 / 126)	47	(59 / 126)
	2004	45	(115 / 253)	59	(82 / 138)	41	(56 / 138)
	2005	43	(78 / 180)	68	(69 / 102)	32	(33 / 102)
	2006	52	(106 / 202)	76	(73 / 96)	24	(23 / 96)
	2007	77	(378 / 492)	72	(82 / 114)	28	(32 / 114)
	2008	84	(495 / 587)	91	(84 / 92)	9	(8 / 92)
2009	45	(59 / 131)	75	(54 / 72)	25	(18 / 72)	
Heterosexual women	2000	38	(62 / 162)	46	(46 / 100)	54	(54 / 100)
	2001	45	(130 / 291)	54	(87 / 161)	46	(74 / 161)
	2002	57	(224 / 390)	55	(92 / 166)	45	(74 / 166)
	2003	56	(205 / 364)	61	(97 / 159)	39	(62 / 159)
	2004	43	(127 / 294)	63	(105 / 167)	37	(62 / 167)
	2005	47	(120 / 257)	69	(95 / 137)	31	(42 / 137)
	2006	51	(152 / 299)	69	(101 / 147)	31	(46 / 147)
	2007	75	(582 / 780)	74	(147 / 198)	26	(51 / 198)
	2008	85	(926 / 1095)	82	(139 / 169)	18	(30 / 169)
2009	62	(95 / 154)	75	(44 / 59)	25	(15 / 59)	
Outside London							
MSM	2000	27	(12 / 44)	59	(19 / 32)	41	(13 / 32)
	2001	33	(17 / 52)	71	(25 / 35)	29	(10 / 35)
	2002	36	(30 / 83)	62	(33 / 53)	38	(20 / 53)
	2003	43	(43 / 99)	68	(38 / 56)	32	(18 / 56)
	2004	47	(68 / 145)	65	(50 / 77)	35	(27 / 77)
	2005	57	(111 / 194)	65	(54 / 83)	35	(29 / 83)
	2006	71	(255 / 361)	64	(68 / 106)	36	(38 / 106)
	2007	80	(350 / 437)	77	(67 / 87)	23	(20 / 87)
	2008	85	(373 / 437)	77	(49 / 64)	23	(15 / 64)
2009	88	(350 / 396)	87	(40 / 46)	13	(6 / 46)	
Heterosexual men	2000	23	(6 / 26)	35	(7 / 20)	65	(13 / 20)
	2001	16	(4 / 25)	38	(8 / 21)	62	(13 / 21)
	2002	19	(12 / 62)	48	(24 / 50)	52	(26 / 50)
	2003	23	(20 / 86)	55	(36 / 66)	45	(30 / 66)
	2004	29	(30 / 103)	78	(57 / 73)	22	(16 / 73)
	2005	38	(30 / 78)	79	(38 / 48)	21	(10 / 48)
	2006	52	(43 / 82)	90	(35 / 39)	10	(4 / 39)
	2007	64	(64 / 100)	75	(27 / 36)	25	(9 / 36)
	2008	65	(77 / 119)	83	(35 / 42)	17	(7 / 42)
2009	76	(72 / 95)	78	(18 / 23)	22	(5 / 23)	
Heterosexual women	2000	14	(3 / 21)	67	(12 / 18)	33	(6 / 18)
	2001	10	(3 / 31)	71	(20 / 28)	29	(8 / 28)
	2002	30	(25 / 82)	75	(43 / 57)	25	(14 / 57)
	2003	25	(27 / 106)	75	(59 / 79)	25	(20 / 79)
	2004	28	(34 / 120)	70	(60 / 86)	30	(26 / 86)
	2005	27	(31 / 115)	82	(69 / 84)	18	(15 / 84)
	2006	55	(75 / 137)	68	(42 / 62)	32	(20 / 62)
	2007	64	(74 / 116)	83	(35 / 42)	17	(7 / 42)
	2008	67	(81 / 121)	88	(35 / 40)	13	(5 / 40)
2009	78	(90 / 116)	85	(22 / 26)	15	(4 / 26)	

* % = Number previously diagnosed / total HIV positive.

† % = Number diagnosed at the visit / (total HIV positive - previously diagnosed).

‡ % = Number remaining undiagnosed after clinic visit / (total HIV positive - previously diagnosed)

GUM-5b: GUM clinic attendees - HIV infection status (unlinked anonymous testing) and HIV diagnosis (VCT) after clinic attendance

Scotland[§]: 1999-2009

Area Exposure category	Number of infections diagnosed		
	Previously diagnosed (%) [*]	New diagnosis at that visit (%) [†]	Undiagnosed after clinic visit (%) [‡]
Scotland MSM			
2000	48 (12 / 25)	31 (4 / 13)	69 (9 / 13)
2001	36 (9 / 25)	50 (8 / 16)	50 (8 / 16)
2002	43 (12 / 28)	38 (6 / 16)	63 (10 / 16)
2003	47 (21 / 45)	50 (12 / 24)	50 (12 / 24)
2004	43 (28 / 65)	51 (19 / 37)	49 (18 / 37)
2005	27 (7 / 26)	79 (15 / 19)	21 (4 / 19)
2006	41 (14 / 34)	70 (14 / 20)	30 (6 / 20)
2007	43 (10 / 23)	92 (12 / 13)	8 (1 / 13)
2008	48 (16 / 33)	59 (10 / 17)	41 (7 / 17)
2009	N/A	N/A	N/A
Heterosexual men			
2000	13 (1 / 8)	14 (1 / 7)	86 (6 / 7)
2001	0 (0 / 4)	25 (1 / 4)	75 (3 / 4)
2002	27 (3 / 11)	50 (4 / 8)	50 (4 / 8)
2003	43 (3 / 7)	0 (0 / 4)	100 (4 / 4)
2004	31 (5 / 16)	64 (7 / 11)	36 (4 / 11)
2005	50 (2 / 4)	50 (1 / 2)	50 (1 / 2)
2006	20 (1 / 5)	50 (2 / 4)	50 (2 / 4)
2007	0 (0 / 9)	44 (4 / 9)	56 (5 / 9)
2008	33 (2 / 6)	75 (3 / 4)	25 (1 / 4)
2009	N/A	N/A	N/A
Heterosexual women			
2000	33 (2 / 6)	25 (1 / 4)	75 (3 / 4)
2001	29 (2 / 7)	0 (0 / 5)	100 (5 / 5)
2002	18 (3 / 17)	50 (7 / 14)	50 (7 / 14)
2003	25 (3 / 12)	78 (7 / 9)	22 (2 / 9)
2004	37 (7 / 19)	58 (7 / 12)	42 (5 / 12)
2005	0 (0 / 3)	100 (3 / 3)	0 (0 / 3)
2006	40 (2 / 5)	67 (2 / 3)	33 (1 / 3)
2007	40 (2 / 5)	33 (1 / 3)	67 (2 / 3)
2008	0 (0 / 6)	100 (6 / 6)	0 (0 / 6)
2009	N/A	N/A	N/A

* This proportion (number previously diagnosed / total HIV positive) is given as a percentage.

† This proportion (Number diagnosed at the visit / (total HIV positive - previously diagnosed)) is given as a percentage.

‡ This proportion (Number remaining undiagnosed after clinic visit / (total HIV positive - previously diagnosed)) is given as a percentage. A small proportion of specimens have insufficient sera to be included in the unlinked anonymous testing. This means that if the GUM Anon survey detects no individuals with undiagnosed HIV during a particular year, it is not possible to conclude that none of the individuals attending the GUM clinics during the year in question had an undiagnosed HIV infection.

§ Between 2002 and 2004, clinic data from Edinburgh has been excluded. From 2005, data is derived from one clinic in Glasgow

N/A Not available. Study terminated in Scotland in 2008.

GUM-6: GUM clinic attendees - rate (%) of previously undiagnosed HIV infection* by category of STI diagnoses at clinic attendance (acute STI† or other‡)

England, Wales, Northern Ireland: 2000-2009

Exposure Category	MSM		Heterosexual males		Heterosexual females	
	Acute STI†	Other	Acute STI†	Other	Acute STI†	Other
London						
2000	5.8 (80 / 1377)	4.3 (112 / 2607)	0.56 (30 / 5336)	0.68 (48 / 7053)	0.68 (24 / 3515)	0.59 (76 / 12812)
2001	6.1 (105 / 1726)	4.7 (150 / 3172)	0.52 (32 / 6152)	0.95 (84 / 8867)	0.65 (29 / 4445)	0.78 (132 / 16868)
2002	6.4 (98 / 1520)	5.0 (186 / 3725)	0.81 (52 / 6424)	1.14 (123 / 10779)	0.94 (42 / 4461)	0.66 (124 / 18885)
2003	7.0 (103 / 1481)	4.5 (166 / 3701)	0.68 (39 / 5762)	0.81 (87 / 10781)	0.75 (32 / 4246)	0.64 (127 / 19868)
2004	6.7 (87 / 1289)	3.8 (120 / 3148)	0.87 (51 / 5894)	0.77 (87 / 11266)	0.88 (34 / 3880)	0.68 (133 / 19418)
2005	6.0 (72 / 1202)	2.9 (96 / 3272)	0.49 (27 / 5567)	0.65 (75 / 11594)	0.57 (21 / 3685)	0.56 (116 / 20735)
2006	6.4 (94 / 1463)	3.7 (142 / 3835)	0.61 (34 / 5584)	0.55 (62 / 11308)	0.65 (25 / 3857)	0.56 (122 / 21751)
2007	5.6 (71 / 1258)	3.8 (183 / 4820)	0.59 (30 / 5053)	0.61 (84 / 13775)	0.89 (33 / 3725)	0.65 (165 / 25522)
2008	7.5 (74 / 983)	3.0 (139 / 4675)	0.45 (16 / 3525)	0.59 (76 / 12890)	0.65 (20 / 3077)	0.67 (149 / 22305)
2009	2.8 (11 / 396)	3.4 (62 / 1840)	0.74 (20 / 2700)	0.53 (52 / 9804)	0.41 (9 / 2187)	0.32 (50 / 15773)
Outside London						
2000	1.2 (8 / 643)	2.1 (24 / 1156)	0.12 (9 / 7453)	0.12 (11 / 8948)	0.10 (5 / 5144)	0.12 (13 / 10825)
2001	2.1 (14 / 673)	1.6 (21 / 1300)	0.07 (5 / 7167)	0.17 (16 / 9682)	0.14 (7 / 5081)	0.18 (21 / 11606)
2002	3.6 (26 / 731)	1.9 (27 / 1459)	0.31 (22 / 7095)	0.27 (28 / 10312)	0.23 (12 / 5303)	0.36 (45 / 12465)
2003	2.8 (25 / 884)	1.7 (31 / 1785)	0.30 (25 / 8379)	0.33 (41 / 12473)	0.35 (21 / 6031)	0.39 (58 / 15051)
2004	2.8 (29 / 1028)	2.4 (48 / 2000)	0.27 (25 / 9410)	0.35 (48 / 13548)	0.45 (30 / 6605)	0.33 (56 / 16739)
2005	3.9 (42 / 1074)	1.9 (41 / 2155)	0.18 (17 / 9334)	0.20 (31 / 15799)	0.28 (18 / 6487)	0.35 (66 / 18943)
2006	4.5 (44 / 976)	2.7 (62 / 2326)	0.14 (11 / 8059)	0.18 (28 / 15634)	0.24 (14 / 5817)	0.27 (48 / 17644)
2007	3.4 (35 / 1029)	2.0 (52 / 2576)	0.08 (7 / 8480)	0.17 (29 / 17461)	0.09 (5 / 5633)	0.20 (37 / 18071)
2008	2.8 (28 / 1016)	1.5 (36 / 2447)	0.14 (12 / 8338)	0.16 (30 / 18190)	0.14 (9 / 6243)	0.15 (31 / 21268)
2009	2.7 (24 / 884)	1.2 (22 / 1805)	0.12 (8 / 6696)	0.11 (15 / 13287)	0.09 (4 / 4465)	0.14 (22 / 16057)

* Previously undiagnosed HIV infection includes those diagnosed at the clinic attendance and those remaining undiagnosed, but excludes those diagnosed earlier.

† Acute STI defined as presenting with one of the following diagnoses: infectious syphilis, gonorrhoea, chancroid/donovanosis/LGV, Chlamydia, NSU, trichomoniasis, scabies/pediculosis, HSV & HPV first attack or *Molluscum contagiosum*.

‡ Includes those with a non-acute STI and with no STI diagnosed.

GUM-7: GUM clinic attendees - rate (%) of overall HIV infection by category of STI diagnoses at clinic attendance (acute STI* or other‡)

United Kingdom: 2000-2009

Exposure Category	MSM		Heterosexual males		Heterosexual females							
	Area	Acute STI*	Other	Acute STI*	Other	Acute STI*	Other					
London												
2000	10.9	(159 / 1456)	10.6	(295 / 2790)	0.6	(33 / 5339)	1.1	(77 / 7082)	0.8	(29 / 3520)	1.0	(133 / 12869)
2001	13.9	(262 / 1883)	16.3	(590 / 3612)	0.6	(40 / 6160)	1.8	(164 / 8947)	0.8	(34 / 4450)	1.5	(257 / 16993)
2002	15.9	(269 / 1691)	29.5	(1484 / 5023)	1.4	(89 / 6461)	3.6	(395 / 11051)	1.1	(48 / 4467)	1.8	(342 / 19103)
2003	16.9	(280 / 1658)	21.4	(963 / 4498)	1.0	(59 / 5782)	2.2	(240 / 10934)	0.9	(40 / 4254)	1.6	(324 / 20065)
2004	18.0	(263 / 1465)	19.1	(713 / 3741)	1.0	(58 / 5901)	1.7	(195 / 11374)	1.1	(44 / 3890)	1.3	(250 / 19535)
2005	21.0	(301 / 1431)	20.2	(806 / 3982)	0.7	(37 / 5577)	1.2	(143 / 11662)	0.7	(25 / 3689)	1.1	(232 / 20851)
2006	21.5	(374 / 1743)	23.9	(1161 / 4854)	0.8	(44 / 5594)	1.4	(158 / 11404)	0.8	(30 / 3862)	1.2	(269 / 21898)
2007	22.3	(340 / 1527)	44.5	(3716 / 8353)	0.8	(39 / 5062)	3.2	(453 / 14144)	1.2	(43 / 3735)	2.8	(737 / 26094)
2008	26.2	(323 / 1232)	43.1	(3431 / 7967)	0.8	(27 / 3536)	4.2	(560 / 13374)	1.0	(31 / 3088)	4.6	(1064 / 23220)
2009	11.3	(49 / 434)	12.0	(243 / 2021)	0.9	(24 / 2704)	1.1	(107 / 9859)	0.5	(12 / 2190)	0.9	(142 / 15865)
Elsewhere in E, W and NI												
2000	2.2	(14 / 649)	2.6	(30 / 1162)	0.1	(10 / 7454)	0.2	(16 / 8953)	0.1	(5 / 5144)	0.1	(16 / 10828)
2001	3.1	(21 / 680)	2.4	(31 / 1310)	0.1	(5 / 7167)	0.2	(20 / 9686)	0.1	(7 / 5081)	0.2	(24 / 11609)
2002	4.7	(35 / 740)	3.2	(48 / 1480)	0.4	(26 / 7099)	0.3	(36 / 10320)	0.4	(20 / 5311)	0.5	(62 / 12482)
2003	4.2	(38 / 897)	3.4	(61 / 1815)	0.3	(29 / 8383)	0.5	(57 / 12489)	0.4	(24 / 6034)	0.5	(82 / 15075)
2004	3.8	(40 / 1039)	5.1	(105 / 2057)	0.3	(28 / 9413)	0.6	(75 / 13575)	0.5	(32 / 6607)	0.5	(88 / 16771)
2005	5.4	(59 / 1091)	6.0	(135 / 2249)	0.2	(23 / 9340)	0.3	(55 / 15823)	0.3	(18 / 6487)	0.5	(97 / 18974)
2006	7.0	(70 / 1002)	11.4	(291 / 2555)	0.2	(15 / 8063)	0.4	(67 / 15673)	0.4	(23 / 5826)	0.6	(114 / 17710)
2007	5.7	(60 / 1054)	13.0	(377 / 2901)	0.1	(9 / 8482)	0.5	(91 / 17523)	0.1	(6 / 5634)	0.6	(110 / 18144)
2008	5.5	(58 / 1046)	13.6	(379 / 2790)	0.2	(19 / 8345)	0.5	(100 / 18260)	0.2	(11 / 6245)	0.5	(110 / 21347)
2009	5.4	(49 / 909)	16.3	(347 / 2130)	0.2	(11 / 6699)	0.6	(84 / 13356)	0.2	(7 / 4468)	0.7	(109 / 16144)
Scotland[§]												
2000	2.8	(8 / 285)	2.9	(17 / 577)	0.1	(3 / 2061)	0.2	(5 / 2849)	0.3	(5 / 1727)	0.1	(1 / 1986)
2001	3.7	(12 / 326)	2.0	(13 / 661)	0.1	(2 / 2271)	0.1	(2 / 3247)	0.2	(4 / 2020)	0.1	(3 / 2409)
2002	3.0	(10 / 337)	2.4	(18 / 765)	0.2	(4 / 2393)	0.2	(7 / 3693)	0.3	(6 / 1822)	0.4	(11 / 2913)
2003	3.2	(12 / 380)	3.5	(33 / 944)	0.1	(3 / 2493)	0.1	(4 / 4256)	0.2	(4 / 1807)	0.2	(8 / 3400)
2004	6.2	(28 / 452)	3.4	(37 / 1081)	0.2	(5 / 2467)	0.2	(11 / 4935)	0.2	(4 / 1944)	0.4	(15 / 3865)
2005	7.8	(9 / 115)	3.9	(17 / 439)	0.5	(3 / 650)	0.1	(1 / 1361)	0.4	(2 / 472)	0.1	(1 / 1073)
2006	6.0	(12 / 199)	4.4	(22 / 499)	0.4	(3 / 780)	0.1	(2 / 1674)	0.0	(0 / 490)	0.4	(5 / 1312)
2007	7.1	(11 / 155)	2.7	(12 / 438)	0.5	(3 / 596)	0.4	(6 / 1478)	0.0	(0 / 481)	0.4	(5 / 1370)
2008	6.3	(9 / 144)	4.0	(24 / 602)	0.1	(1 / 688)	0.3	(5 / 1868)	0.0	(0 / 564)	0.3	(6 / 1823)
2009	N/A		N/A		N/A		N/A		N/A		N/A	

* Acute STI is defined as presenting with one of the following diagnoses: infectious syphilis, gonorrhoea, chancroid/donovanosis/LGV, Chlamydia, NSU, trichomoniasis, scabies/pediculosis, HSV & HPV first attack or *Molluscum contagiosum*.

‡ Includes those with a non-acute STI and with no STI diagnosed.

§ Between 2002 and 2004, clinic data from Edinburgh has been excluded. From 2005, data is derived from one clinic in Glasgow

N/A Not available. Study terminated in Scotland in 2008.

GUM-8: GUM clinic attendees - knowledge of HIV status among HIV-infected persons with an acute STI*† by exposure category

England, Wales and Northern Ireland: 2000-2009

Area	MSM		Heterosexual men		Heterosexual women	
	Percent of previously undiagnosed‡ HIV-infected with acute STI	Percent of previously diagnosed§ HIV-infected with acute STI	Percent of previously undiagnosed‡ HIV-infected with acute STI	Percent of previously diagnosed§ HIV-infected with acute STI	Percent of previously undiagnosed‡ HIV-infected with acute STI	Percent of previously diagnosed§ HIV-infected with acute STI
2000	39 (88 / 224)	31 (85 / 274)	40 (39 / 98)	11 (4 / 38)	25 (29 / 118)	8 (5 / 65)
2001	41 (119 / 290)	27 (164 / 614)	27 (37 / 137)	9 (8 / 92)	19 (36 / 189)	4 (5 / 133)
2002	37 (124 / 337)	12 (180 / 1499)	33 (74 / 225)	13 (41 / 321)	24 (54 / 223)	6 (14 / 249)
2003	39 (128 / 325)	19 (190 / 1017)	33 (64 / 192)	12 (24 / 193)	22 (53 / 238)	5 (11 / 232)
2004	41 (116 / 284)	22 (187 / 837)	36 (76 / 211)	7 (10 / 145)	25 (64 / 253)	7 (12 / 161)
2005	45 (114 / 251)	23 (246 / 1050)	29 (44 / 150)	15 (16 / 108)	18 (39 / 221)	3 (4 / 151)
2006	40 (138 / 342)	20 (306 / 1554)	33 (45 / 135)	9 (14 / 149)	19 (39 / 209)	6 (14 / 227)
2007	31 (106 / 341)	7 (294 / 4152)	25 (37 / 150)	2 (11 / 442)	16 (38 / 240)	2 (11 / 656)
2008	37 (102 / 277)	7 (279 / 3914)	21 (28 / 134)	3 (18 / 572)	14 (29 / 209)	1 (13 / 1007)
2009	29 (35 / 119)	11 (63 / 569)	29 (28 / 95)	5 (7 / 131)	15 (13 / 85)	3 (6 / 185)

*Acute STI proportion = Number with an acute STI / number HIV positive.

†Acute STI defined as presenting with one of the following diagnoses: infectious syphilis, gonorrhoea, chancroid/ Donovanosis/LGV, Chlamydia, NSU, Trichomoniasis, Scabies/Pediculosis, HSV & HPV first attack or Molluscum contagiosum.

‡ Previously undiagnosed HIV infection includes those diagnosed at the clinic attendance and those remaining undiagnosed but excludes those diagnosed earlier.

§ Previously diagnosed HIV infection includes those whose HIV infection was diagnosed prior to the clinic attendance.

GUM-9a: GUM clinic attendees - proportion of previously undiagnosed* HIV-infected persons who remain undiagnosed, ratio of tests per new HIV diagnosis and number of further tests necessary to detect undiagnosed infections, in individuals with or without an acute STI†

England, Wales and Northern Ireland: 2000-2009

Exposure category	Acute STI†				Other			
	% undiagnosed after clinic visit	Number of tests done for each new HIV diagnosis	Number of tests needed to detect an undiagnosed (a) HIV Infection	% undiagnosed after clinic visit	Number of tests done for each new HIV diagnosis	Number of tests needed to detect an undiagnosed (a) HIV Infection		
	% (a) / (b)	n (c) / (d)	(e) / (a)	(a) / (b)	(c) / (d)	(e) / (a)		
MSM								
2000	84 (74 / 88)	61 (854 / 14)	17 (1247 / 74)	49 (67 / 136)	32 (2232 / 69)	25 (1654 / 67)		
2001	69 (82 / 119)	33 (1221 / 37)	16 (1288 / 82)	46 (79 / 171)	31 (2876 / 92)	22 (1737 / 79)		
2002	65 (81 / 124)	30 (1311 / 43)	13 (1057 / 81)	54 (115 / 213)	36 (3534 / 98)	16 (1837 / 115)		
2003	56 (72 / 128)	25 (1407 / 56)	15 (1078 / 72)	46 (91 / 197)	36 (3783 / 106)	20 (1863 / 91)		
2004	53 (61 / 116)	33 (1812 / 55)	10 (607 / 61)	37 (62 / 168)	39 (4182 / 106)	17 (1064 / 62)		
2005	48 (55 / 114)	29 (1729 / 59)	12 (645 / 55)	42 (57 / 137)	57 (4551 / 80)	17 (956 / 57)		
2006	57 (79 / 138)	34 (2030 / 59)	7 (528 / 79)	42 (85 / 204)	44 (5279 / 119)	12 (979 / 85)		
2007	42 (44 / 106)	31 (1950 / 62)	10 (436 / 44)	33 (77 / 235)	41 (6426 / 158)	15 (1145 / 77)		
2008	46 (47 / 102)	33 (1825 / 55)	6 (272 / 47)	27 (48 / 175)	50 (6376 / 127)	18 (885 / 48)		
2009	31 (11 / 35)	50 (1192 / 24)	11 (118 / 11)	32 (27 / 084)	59 (3368 / 57)	13 (338 / 27)		
Heterosexuals								
2000	62 (42 / 68)	173 (4510 / 26)	405 (16998 / 42)	45 (67 / 148)	176 (14269 / 81)	25 (25502 / 67)		
2001	67 (49 / 73)	270 (6476 / 24)	335 (16432 / 49)	41 (103 / 253)	138 (20758 / 150)	257 (26475 / 103)		
2002	56 (72 / 128)	192 (10749 / 56)	176 (12655 / 72)	38 (121 / 320)	154 (30624 / 199)	183 (22093 / 121)		
2003	50 (58 / 117)	210 (12416 / 59)	209 (12102 / 58)	36 (113 / 313)	168 (33515 / 200)	220 (24910 / 113)		
2004	43 (60 / 140)	229 (18359 / 80)	126 (7558 / 60)	31 (100 / 324)	210 (47143 / 224)	141 (14102 / 100)		
2005	34 (28 / 83)	362 (19887 / 55)	188 (5256 / 28)	25 (72 / 288)	258 (55708 / 216)	161 (11600 / 72)		
2006	27 (23 / 84)	333 (20332 / 61)	133 (3057 / 23)	27 (70 / 260)	309 (58753 / 190)	112 (7812 / 70)		
2007	35 (26 / 75)	421 (20605 / 49)	90 (2348 / 26)	23 (73 / 315)	280 (67650 / 242)	102 (7425 / 73)		
2008	30 (17 / 57)	494 (19753 / 40)	87 (1482 / 17)	12 (33 / 286)	276 (69933 / 253)	150 (4952 / 33)		
2009	22 (9 / 41)	484 (15479 / 32)	67 (604 / 9)	24 (33 / 139)	492 (52163 / 106)	87 (2861 / 33)		

* Previously undiagnosed HIV infection includes those diagnosed at the clinic attendance and those remaining undiagnosed, but excludes those diagnosed earlier.

† Acute STI defined as presenting with one of the following diagnoses: infectious syphilis, gonorrhoea, chancroid/ Donovanosis/LGV, Chlamydia, NSU, Trichomoniasis, Scabies/Pediculosis, HSV & HPV first attack or Molluscum contagiosum.

a number of HIV-infected persons remaining undiagnosed after the clinic visit

b total number of previously undiagnosed HIV infections (includes those diagnosed at the clinic visit and those remaining undiagnosed)

c number of persons that accepted a voluntary confidential HIV test

d number of previously undiagnosed HIV-infected persons who were diagnosed at the clinic visit

e number of persons that did not accept a voluntary confidential HIV test

GUM-9b: GUM clinic attendees - uptake of voluntary confidential HIV tests among persons with or without an acute STI* by HIV status

England, Wales and Northern Ireland: 2000-2009

Exposure category	Acute STI [†]		Other	
	VCT uptake (%) among those with a previously undiagnosed [†] HIV infection	VCT uptake (%) among those who are HIV negative	VCT uptake (%) among those with a previously undiagnosed [†] HIV infection	VCT uptake (%) among those who are HIV negative
MSM				
2000	16 (14 / 88)	40 (766 / 1925)	51 (69 / 136)	58 (2096 / 3614)
2001	31 (37 / 119)	49 (1102 / 2271)	54 (92 / 171)	63 (2705 / 4271)
2002	35 (43 / 124)	56 (1187 / 2120)	46 (98 / 213)	67 (3321 / 4945)
2003	44 (56 / 128)	57 (1279 / 2229)	54 (106 / 197)	68 (3586 / 5252)
2004	47 (55 / 116)	78 (1696 / 2187)	63 (106 / 168)	82 (4014 / 4910)
2005	52 (59 / 114)	75 (1615 / 2146)	58 (80 / 137)	84 (4414 / 5233)
2006	43 (59 / 138)	83 (1892 / 2282)	58 (119 / 204)	87 (5075 / 5850)
2007	58 (62 / 106)	85 (1844 / 2174)	67 (158 / 235)	87 (6191 / 7101)
2008	54 (55 / 102)	91 (1723 / 1893)	73 (127 / 175)	90 (6201 / 6911)
2009	69 (24 / 35)	93 (1157 / 1240)	68 (57 / 84)	93 (3284 / 3538)
Heterosexuals				
2000	38 (26 / 68)	21 (4442 / 21372)	55 (81 / 148)	36 (14121 / 39475)
2001	33 (24 / 73)	28 (6403 / 22762)	59 (150 / 253)	44 (20505 / 46727)
2002	44 (56 / 128)	46 (10621 / 23148)	62 (199 / 320)	58 (30304 / 52077)
2003	50 (59 / 117)	51 (12299 / 24284)	64 (200 / 313)	57 (33202 / 57799)
2004	57 (80 / 140)	71 (18219 / 25637)	69 (224 / 324)	77 (46819 / 60597)
2005	66 (55 / 83)	79 (19804 / 24977)	75 (216 / 288)	83 (55420 / 66732)
2006	73 (61 / 84)	87 (20248 / 23221)	73 (190 / 260)	89 (58493 / 66045)
2007	65 (49 / 75)	90 (20530 / 22803)	77 (242 / 315)	90 (67335 / 74445)
2008	70 (40 / 57)	93 (19696 / 21121)	88 (253 / 286)	94 (69647 / 74313)
2009	78 (32 / 41)	96 (15438 / 16001)	76 (106 / 139)	95 (52024 / 54746)

* Acute STI defined as presenting with one of the following diagnoses: infectious syphilis, gonorrhoea, chancroid/ Donovanosis/LGV, Chlamydia, NSU, Trichomoniasis, Scabies/Pediculosis, HSV & HPV first attack or *Molluscum contagiosum*.

[†] Previously undiagnosed HIV infection includes those diagnosed at the clinic attendance and those remaining undiagnosed, but excludes those diagnosed earlier.

GUM-9c: GUM clinic attendees - uptake of voluntary confidential HIV tests among persons with or without an acute STI* by HIV status

Scotland: 2004-2009

Exposure category	Acute STI†		Other	
	VCT uptake (%) among those with a previously undiagnosed† HIV infection	VCT uptake (%) among those who are HIV negative	VCT uptake (%) among those with a previously undiagnosed† HIV infection	VCT uptake (%) among those who are HIV negative
MSM				
2004	58 (7 / 12)	79 (251 / 317)	83 (15 / 18)	86 (636 / 739)
2005	80 (4 / 5)	83 (85 / 102)	83 (10 / 12)	84 (329 / 394)
2006	71 (5 / 7)	84 (156 / 186)	91 (10 / 11)	91 (406 / 447)
2007	100 (6 / 6)	94 (133 / 142)	100 (7 / 7)	93 (385 / 412)
2008	67 (2 / 3)	94 (125 / 133)	100 (11 / 11)	97 (478 / 494)
2009	N/A	N/A	N/A	N/A
Heterosexuals				
2004	60 (3 / 5)	89 (1994 / 2249)	73 (8 / 11)	88 (3967 / 4486)
2005	75 (3 / 4)	91 (1012 / 1107)	100 (1 / 1)	92 (2186 / 2385)
2006	50 (1 / 2)	94 (1170 / 1251)	80 (4 / 5)	95 (2761 / 2919)
2007	33 (1 / 3)	98 (1036 / 1058)	89 (8 / 9)	98 (2701 / 2763)
2008	100 (1 / 1)	99 (1231 / 1243)	100 (9 / 9)	99 (3365 / 3392)
2009	N/A	N/A	N/A	N/A

* Acute STI defined as presenting with one of the following diagnoses: infectious syphilis, gonorrhoea, chancroid/ Donovanosis/LGV, Chlamydia, NSU, Trichomoniasis, Scabies/Pediculosis, HSV & HPV first attack or *Molluscum contagiosum*.

† Previously undiagnosed HIV infection includes those diagnosed at the clinic attendance and those remaining undiagnosed, but excludes those diagnosed earlier.

N/A Not available. Study terminated in Scotland in 2008.

GUM-10 : Heterosexuals attending GUM clinics - HIV diagnosis status of those attending with previously undiagnosed* HIV infection by country of birth

England, Wales and Northern Ireland: 2000-2009

Country of birth	Year	Men % (x/n)		Women % (x/n)	
		Diagnosed at the clinic visit	Remained undiagnosed after clinic visit	Diagnosed at the clinic visit	Remained undiagnosed after clinic visit
UK	2000	45 (14 / 31)	55 (17 / 31)	36 (9 / 25)	64 (16 / 25)
	2001	39 (18 / 46)	61 (28 / 46)	38 (16 / 42)	62 (26 / 42)
	2002	37 (27 / 73)	63 (46 / 73)	61 (25 / 41)	39 (16 / 41)
	2003	46 (31 / 67)	54 (36 / 67)	63 (30 / 48)	38 (18 / 48)
	2004	67 (49 / 73)	33 (24 / 73)	65 (49 / 75)	35 (26 / 75)
	2005	70 (37 / 53)	30 (16 / 53)	75 (43 / 57)	25 (14 / 57)
	2006	73 (38 / 52)	27 (14 / 52)	77 (46 / 60)	23 (14 / 60)
	2007	71 (45 / 63)	29 (18 / 63)	79 (52 / 66)	21 (14 / 66)
	2008	91 (48 / 53)	9 (5 / 53)	86 (60 / 70)	14 (10 / 70)
	2009	77 (30 / 39)	23 (9 / 39)	80 (28 / 35)	20 (7 / 35)
Sub-Saharan Africa	2000	57 (21 / 37)	43 (16 / 37)	54 (39 / 72)	46 (33 / 72)
	2001	56 (35 / 62)	44 (27 / 62)	67 (70 / 105)	33 (35 / 105)
	2002	67 (58 / 87)	33 (29 / 87)	62 (85 / 138)	38 (53 / 138)
	2003	63 (53 / 84)	37 (31 / 84)	66 (99 / 151)	34 (52 / 151)
	2004	70 (57 / 81)	30 (24 / 81)	63 (81 / 128)	37 (47 / 128)
	2005	78 (50 / 64)	22 (14 / 64)	73 (86 / 118)	27 (32 / 118)
	2006	88 (38 / 43)	12 (5 / 43)	59 (61 / 104)	41 (43 / 104)
	2007	74 (37 / 50)	26 (13 / 50)	68 (75 / 110)	32 (35 / 110)
	2008	87 (39 / 45)	13 (6 / 45)	76 (55 / 72)	24 (17 / 72)
	2009	79 (23 / 29)	21 (6 / 29)	60 (15 / 25)	40 (10 / 25)
Total heterosexuals†	2000	50 (49 / 98)	50 (49 / 98)	49 (58 / 118)	51 (60 / 118)
	2001	49 (67 / 137)	51 (70 / 137)	57 (107 / 189)	43 (82 / 189)
	2002	53 (120 / 225)	47 (105 / 225)	61 (135 / 223)	39 (88 / 223)
	2003	54 (103 / 192)	46 (89 / 192)	66 (156 / 238)	34 (82 / 238)
	2004	66 (139 / 211)	34 (72 / 211)	65 (165 / 253)	35 (88 / 253)
	2005	71 (107 / 150)	29 (43 / 150)	74 (164 / 221)	26 (57 / 221)
	2006	80 (108 / 135)	20 (27 / 135)	68 (143 / 209)	32 (66 / 209)
	2007	73 (109 / 150)	27 (41 / 150)	76 (182 / 240)	24 (58 / 240)
	2008	89 (119 / 134)	11 (15 / 134)	83 (174 / 209)	17 (35 / 209)
	2009	76 (72 / 95)	24 (23 / 95)	78 (66 / 85)	22 (19 / 85)

*Previously undiagnosed HIV infection includes those diagnosed at the clinic attendance and those remaining undiagnosed, but excludes those diagnosed earlier.

† Includes attendees for whom country of birth was not reported.

GUM-11: Men who have sex with men attending GUM clinics - overall HIV prevalence* by age group

United Kingdom: 2000-2009

Area	Age Group					
	<20	20-24	25-34	35-44	45+	All ages [†]
London						
1999	1.4 (1 / 69)	2.9 (14 / 484)	6.8 (144 / 2109)	10.6 (118 / 1112)	3.8 (19 / 495)	6.9 (296 / 4269)
2000	3.7 (3 / 82)	4.9 (21 / 425)	9.7 (188 / 1943)	15.7 (182 / 1160)	9.7 (46 / 476)	10.8 (440 / 4086)
2001	3.2 (2 / 63)	7.4 (41 / 551)	12.3 (303 / 2471)	22.6 (378 / 1673)	17.8 (124 / 695)	15.6 (848 / 5453)
2002	3.9 (3 / 77)	9.6 (61 / 633)	20.9 (576 / 2752)	36.1 (829 / 2297)	30.6 (275 / 898)	26.2 (1744 / 6657)
2003	2.3 (2 / 87)	7.4 (52 / 703)	16.3 (409 / 2505)	28.1 (566 / 2015)	26.4 (212 / 802)	20.3 (1241 / 6112)
2004	6.6 (6 / 91)	5.4 (33 / 613)	14.9 (303 / 2030)	27.5 (455 / 1657)	22.5 (174 / 775)	18.8 (971 / 5166)
2005	2.5 (2 / 80)	5.6 (31 / 552)	14.8 (320 / 2165)	29.4 (523 / 1780)	28.1 (226 / 804)	20.5 (1102 / 5381)
2006	5.8 (5 / 86)	6.4 (43 / 676)	16.7 (437 / 2614)	33.6 (731 / 2175)	30.1 (309 / 1025)	23.2 (1525 / 6576)
2007	5.5 (7 / 128)	8.4 (64 / 759)	25.7 (904 / 3524)	55.5 (1977 / 3564)	57.3 (1106 / 1930)	41.0 (4058 / 9905)
2008	11.9 (14 / 118)	11.4 (83 / 728)	23.7 (806 / 3408)	56.5 (1663 / 2945)	61.0 (1144 / 1874)	40.9 (3710 / 9073)
Elsewhere in E, W and NI						
2000	0.0 (0 / 149)	0.9 (3 / 348)	3.2 (21 / 654)	3.6 (15 / 413)	2.1 (5 / 237)	2.4 (44 / 1801)
2001	1.1 (2 / 177)	1.0 (4 / 386)	3.5 (24 / 695)	4.0 (18 / 448)	1.4 (4 / 277)	2.6 (52 / 1983)
2002	1.2 (2 / 165)	1.3 (6 / 471)	3.7 (28 / 749)	6.3 (32 / 507)	4.7 (15 / 317)	3.8 (83 / 2209)
2003	1.4 (3 / 216)	1.8 (11 / 598)	4.0 (35 / 872)	5.5 (34 / 623)	4.2 (16 / 381)	3.7 (99 / 2690)
2004	1.2 (3 / 257)	2.8 (21 / 743)	4.4 (42 / 950)	8.9 (60 / 675)	4.2 (19 / 455)	4.7 (145 / 3080)
2005	0.7 (2 / 289)	2.4 (18 / 750)	7.1 (76 / 1066)	8.7 (65 / 746)	6.0 (28 / 463)	5.7 (189 / 3314)
2006	1.8 (6 / 333)	4.0 (30 / 758)	12.1 (142 / 1170)	14.2 (107 / 755)	14.5 (74 / 512)	10.2 (359 / 3528)
2007	0.8 (3 / 395)	3.9 (34 / 868)	8.4 (102 / 1208)	21.1 (186 / 881)	17.3 (104 / 602)	10.8 (429 / 3954)
2008	1.2 (4 / 337)	3.2 (25 / 784)	10.7 (110 / 1031)	20.9 (149 / 712)	18.1 (106 / 585)	11.4 (394 / 3449)
2009	N/A	N/A	N/A	N/A	N/A	N/A
Scotland[§]						
2000	0.0 (0 / 75)	2.8 (4 / 142)	2.3 (7 / 304)	5.5 (12 / 218)	1.8 (2 / 109)	2.9 (25 / 848)
2001	0.0 (0 / 80)	1.7 (3 / 180)	3.6 (13 / 366)	3.0 (7 / 237)	1.8 (2 / 109)	2.6 (25 / 972)
2002	0.0 (0 / 79)	1.9 (4 / 209)	1.8 (7 / 386)	4.3 (12 / 278)	3.6 (5 / 138)	2.6 (28 / 1090)
2003	1.9 (2 / 103)	0.4 (1 / 250)	4.2 (19 / 449)	5.7 (19 / 334)	1.9 (3 / 158)	3.4 (44 / 1294)
2004	0.0 (0 / 114)	1.5 (5 / 323)	3.8 (17 / 447)	7.6 (31 / 408)	5.2 (11 / 211)	4.3 (64 / 1503)
2005	0.0 (0 / 41)	2.4 (3 / 124)	4.5 (7 / 154)	7.9 (11 / 140)	3.5 (3 / 86)	4.4 (24 / 545)
2006	0.0 (0 / 42)	1.4 (2 / 143)	4.9 (11 / 223)	8.3 (15 / 181)	4.9 (5 / 103)	4.8 (33 / 692)
2007	0.0 (0 / 42)	4.8 (5 / 105)	5.1 (10 / 196)	2.5 (4 / 163)	4.8 (4 / 84)	3.9 (23 / 590)
2008	0.0 (0 / 52)	1.8 (3 / 170)	5.2 (13 / 252)	8.5 (13 / 153)	3.4 (4 / 116)	4.4 (33 / 743)
2009	N/A	N/A	N/A	N/A	N/A	N/A

* HIV prevalence (number HIV-1 positive/total tested) is given as a percentage. A small proportion of specimens have insufficient sera to be included in the unlinked anonymous testing. This means that if the GUM Anon survey detects no individuals with undiagnosed HIV during a particular year, it is not possible to conclude that none of the individuals attending the GUM clinics during the year in question had an undiagnosed HIV infection.

[†] Excludes those with age not reported.

[§] Between 2002 and 2004, clinic data from Edinburgh has been excluded. From 2005, data is derived from one clinic in Glasgow

N/A Not available. Study terminated in Scotland in 2008.

GUM-12: Heterosexuals attending GUM clinics - overall HIV prevalence* by age group

London: 2000-2009

Gender	Age Group					
	<20	20-24	25-34	35-44	45+	All ages [†]
Males						
2000	0.14 (1 / 734)	0.33 (8 / 2427)	0.75 (42 / 5607)	1.72 (41 / 2378)	1.39 (14 / 1009)	0.87 (106 / 12155)
2001	0.33 (3 / 899)	0.42 (12 / 2875)	1.29 (87 / 6753)	2.23 (69 / 3096)	2.08 (26 / 1250)	1.32 (197 / 14873)
2002	0.42 (4 / 950)	1.03 (35 / 3407)	1.98 (158 / 7960)	5.86 (206 / 3515)	5.46 (79 / 1448)	2.79 (482 / 17280)
2003	0.45 (5 / 1115)	0.57 (19 / 3362)	1.38 (104 / 7535)	4.36 (137 / 3139)	2.46 (33 / 1339)	1.81 (298 / 16490)
2004	0.68 (9 / 1314)	0.52 (20 / 3840)	1.21 (90 / 7432)	3.08 (96 / 3117)	2.43 (32 / 1317)	1.45 (247 / 17020)
2005	0.25 (3 / 1211)	0.21 (8 / 3756)	0.79 (61 / 7690)	2.47 (74 / 3002)	2.49 (33 / 1326)	1.05 (179 / 16985)
2006	0.18 (2 / 1126)	0.42 (15 / 3571)	0.73 (57 / 7775)	2.98 (89 / 2990)	2.76 (38 / 1377)	1.19 (201 / 16839)
2007	0.87 (11 / 1262)	0.55 (21 / 3829)	1.05 (92 / 8776)	6.06 (204 / 3368)	9.68 (161 / 1663)	2.59 (489 / 18898)
2008	1.17 (10 / 852)	1.07 (34 / 3189)	1.22 (101 / 8290)	7.60 (213 / 2802)	13.19 (197 / 1494)	3.34 (555 / 16627)
2009	0.33 (2 / 600)	0.53 (12 / 2260)	0.54 (37 / 6834)	2.81 (49 / 1742)	2.64 (24 / 909)	1.00 (124 / 12345)
Females						
2000	0.18 (3 / 1675)	0.45 (19 / 4186)	1.21 (87 / 7169)	1.66 (38 / 2293)	1.31 (9 / 686)	0.97 (156 / 16009)
2001	0.64 (13 / 2025)	0.58 (31 / 5379)	1.61 (153 / 9503)	2.23 (72 / 3235)	1.92 (18 / 938)	1.36 (287 / 21080)
2002	0.36 (8 / 2223)	0.60 (38 / 6337)	1.74 (181 / 10389)	3.99 (132 / 3311)	3.06 (28 / 915)	1.67 (387 / 23175)
2003	0.33 (9 / 2711)	0.45 (30 / 6679)	1.58 (163 / 10346)	4.00 (130 / 3249)	2.96 (28 / 947)	1.50 (360 / 23932)
2004	0.35 (10 / 2854)	0.83 (54 / 6498)	1.35 (132 / 9790)	2.11 (64 / 3030)	3.17 (29 / 915)	1.25 (289 / 23087)
2005	0.25 (7 / 2791)	0.58 (39 / 6760)	1.09 (116 / 10682)	2.29 (70 / 3058)	2.34 (21 / 897)	1.05 (253 / 24188)
2006	0.56 (17 / 3020)	0.52 (37 / 7067)	1.02 (113 / 11027)	2.81 (92 / 3278)	3.06 (34 / 1111)	1.15 (293 / 25503)
2007	0.90 (31 / 3441)	0.87 (69 / 7940)	2.09 (263 / 12569)	7.23 (292 / 4039)	8.41 (121 / 1439)	2.64 (776 / 29428)
2008	1.06 (28 / 2632)	1.15 (80 / 6939)	2.51 (287 / 11412)	12.65 (454 / 3590)	13.97 (178 / 1274)	3.97 (1027 / 25847)
2009	0.15 (3 / 2026)	0.33 (16 / 4779)	0.67 (50 / 7422)	2.59 (63 / 2433)	1.57 (16 / 1016)	0.84 (148 / 17676)

* HIV prevalence (number HIV-1 positive/total tested) is given as a percentage.

[†] Excludes those with age not reported.

GUM-13: Heterosexuals attending GUM clinics - overall HIV prevalence* by age group

England, Wales and Northern Ireland excluding London: 2000-2009

Gender	Age Group						All ages [†]
	<20	20-24	25-34	35-44	45+		
Males							
2000	0.00 (0 / 1483)	0.07 (3 / 4520)	0.15 (9 / 6144)	0.45 (12 / 2686)	0.14 (2 / 1478)	0.16 (26 / 16311)	
2001	0.00 (0 / 1603)	0.06 (3 / 4788)	0.15 (9 / 6076)	0.39 (11 / 2797)	0.13 (2 / 1531)	0.15 (25 / 16795)	
2002	0.16 (3 / 1834)	0.15 (8 / 5220)	0.47 (28 / 6012)	0.54 (15 / 2780)	0.54 (8 / 1469)	0.36 (62 / 17315)	
2003	0.13 (3 / 2364)	0.12 (8 / 6507)	0.54 (38 / 6992)	0.87 (28 / 3218)	0.42 (7 / 1676)	0.40 (84 / 20757)	
2004	0.10 (3 / 2892)	0.15 (11 / 7574)	0.45 (34 / 7514)	1.24 (40 / 3219)	0.76 (13 / 1717)	0.44 (101 / 22916)	
2005	0.06 (2 / 3216)	0.06 (5 / 8341)	0.41 (34 / 8231)	0.81 (28 / 3438)	0.49 (9 / 1830)	0.31 (78 / 25056)	
2006	0.06 (2 / 3141)	0.12 (9 / 7714)	0.41 (32 / 7758)	0.92 (29 / 3148)	0.51 (9 / 1778)	0.34 (81 / 23539)	
2007	0.09 (3 / 3324)	0.05 (4 / 8225)	0.27 (24 / 8783)	1.31 (45 / 3432)	1.15 (22 / 1920)	0.38 (98 / 25684)	
2008	0.12 (4 / 3263)	0.08 (7 / 8731)	0.35 (32 / 9107)	1.29 (42 / 3267)	1.53 (32 / 2095)	0.44 (117 / 26463)	
2009	0.09 (2 / 2332)	0.02 (1 / 6587)	0.41 (29 / 7070)	1.46 (35 / 2402)	1.77 (28 / 1578)	0.48 (95 / 19969)	
Females							
2000	0.00 (0 / 3101)	0.06 (3 / 4967)	0.16 (8 / 5011)	0.25 (5 / 2030)	0.52 (4 / 762)	0.13 (20 / 15871)	
2001	0.09 (3 / 3479)	0.02 (1 / 5355)	0.32 (16 / 4987)	0.35 (7 / 1980)	0.37 (3 / 808)	0.18 (30 / 16609)	
2002	0.05 (2 / 3852)	0.18 (11 / 5977)	0.76 (38 / 4977)	1.10 (23 / 2098)	1.01 (8 / 796)	0.46 (82 / 17700)	
2003	0.08 (4 / 4867)	0.25 (18 / 7251)	0.97 (55 / 5654)	0.78 (18 / 2307)	1.13 (10 / 888)	0.50 (105 / 20967)	
2004	0.20 (11 / 5396)	0.29 (24 / 8269)	0.77 (48 / 6232)	1.22 (30 / 2465)	0.75 (7 / 932)	0.52 (120 / 23294)	
2005	0.10 (6 / 5856)	0.22 (20 / 9116)	0.73 (50 / 6843)	0.99 (25 / 2536)	1.22 (12 / 986)	0.45 (113 / 25337)	
2006	0.11 (6 / 5461)	0.20 (17 / 8344)	1.08 (68 / 6298)	1.41 (32 / 2269)	1.48 (14 / 943)	0.59 (137 / 23315)	
2007	0.11 (6 / 5286)	0.12 (10 / 8346)	0.68 (45 / 6588)	1.34 (30 / 2243)	1.90 (20 / 1053)	0.47 (111 / 23516)	
2008	0.10 (6 / 5957)	0.12 (12 / 10041)	0.59 (46 / 7796)	1.60 (38 / 2374)	1.26 (16 / 1268)	0.43 (118 / 27436)	
2009	0.12 (5 / 4223)	0.12 (9 / 7655)	0.63 (37 / 5841)	2.85 (52 / 1827)	1.23 (12 / 975)	0.56 (115 / 20521)	

* HIV prevalence (number HIV-1 positive/total tested) is given as a percentage.

† Excludes those with age not reported.

GUM-14: Heterosexuals attending GUM clinics - overall HIV prevalence* by age group

Scotland[§]:2000-2009

Gender	Age Group					
	<20	20-24	25-34	35-44	45+	All ages [†]
Men						
2000	0.0 (0 / 385)	0.0 (0 / 1205)	0.2 (3 / 1769)	0.3 (3 / 1019)	0.4 (2 / 487)	0.2 (8 / 4865)
2001	0.0 (0 / 466)	0.1 (1 / 1432)	0.1 (2 / 1988)	0.1 (1 / 1066)	0.0 (0 / 513)	0.1 (4 / 5465)
2002	0.0 (0 / 548)	0.2 (4 / 1663)	0.1 (3 / 2165)	0.1 (1 / 1104)	0.6 (3 / 543)	0.2 (11 / 6023)
2003	0.0 (0 / 637)	0.1 (1 / 1963)	0.1 (2 / 2235)	0.2 (2 / 1089)	0.2 (1 / 581)	0.1 (6 / 6505)
2004	0.0 (0 / 675)	0.0 (1 / 2420)	0.2 (4 / 2491)	0.6 (3 / 525)	1.2 (8 / 644)	0.2 (16 / 7305)
2005	0.0 (0 / 202)	0.0 (0 / 677)	0.1 (1 / 675)	1.0 (3 / 297)	0.0 (0 / 135)	0.2 (4 / 1986)
2006	0.0 (0 / 241)	0.0 (0 / 866)	0.5 (4 / 850)	0.3 (1 / 307)	0.0 (0 / 172)	0.2 (5 / 2436)
2007	0.0 (0 / 186)	0.0 (0 / 702)	0.3 (3 / 863)	1.5 (4 / 265)	1.3 (2 / 149)	0.4 (9 / 2165)
2008	0.3 (1 / 296)	0.0 (0 / 821)	0.2 (2 / 952)	0.6 (2 / 308)	0.6 (1 / 175)	0.2 (6 / 2552)
2009	N/A	N/A	N/A	N/A	N/A	N/A
Women						
2000	0.0 (0 / 678)	0.2 (2 / 1170)	0.3 (3 / 1173)	0.2 (1 / 491)	0.0 (0 / 161)	0.2 (6 / 3673)
2001	0.0 (0 / 808)	0.1 (1 / 1409)	0.3 (4 / 1420)	0.4 (2 / 569)	0.0 (0 / 201)	0.2 (7 / 4407)
2002	0.2 (2 / 872)	0.2 (3 / 1590)	0.4 (6 / 1467)	0.9 (5 / 577)	0.0 (0 / 186)	0.3 (16 / 4692)
2003	0.0 (0 / 974)	0.2 (3 / 1785)	0.3 (4 / 1580)	0.7 (4 / 541)	0.0 (0 / 223)	0.2 (11 / 5103)
2004	0.1 (1 / 1179)	0.2 (5 / 2061)	0.4 (7 / 1643)	0.5 (3 / 612)	1.1 (3 / 268)	0.3 (19 / 5763)
2005	0.0 (0 / 264)	0.0 (0 / 602)	0.7 (3 / 455)	0.0 (0 / 168)	0.0 (0 / 44)	0.2 (3 / 1533)
2006	0.0 (0 / 286)	0.3 (2 / 685)	0.3 (2 / 585)	0.6 (1 / 174)	0.0 (0 / 64)	0.3 (5 / 1794)
2007	0.0 (0 / 302)	0.1 (1 / 667)	0.2 (1 / 635)	1.8 (3 / 171)	0.0 (0 / 69)	0.3 (5 / 1844)
2008	0.0 (0 / 430)	0.1 (1 / 850)	0.6 (5 / 777)	0.0 (0 / 228)	0.0 (0 / 99)	0.3 (6 / 2384)
2009	N/A	N/A	N/A	N/A	N/A	N/A

* HIV prevalence (number HIV-1 positive/total tested) is given as a percentage.

† Excludes those with age not reported.

§ Between 2002 and 2004, clinic data from Edinburgh has been excluded. From 2005, data is derived from one clinic in Glasgow.

N/A Not available. Study terminated in Scotland in 2008.

GUM-15: GUM clinic attendees - overall HIV prevalence* by world region of birth

England, Wales and Northern Ireland: 2008 and 2009 combined

Region of Birth	MSM [†]	Male heterosexuals [†]	Female heterosexuals [†]	All exposure categories ^{†‡}
UK	21.6 (2533 / 11754)	0.5 (259 / 55877)	0.4 (264 / 64220)	2.3 (3056 / 131851)
Rest of Europe	28.7 (671 / 2334)	1.4 (65 / 4637)	1.1 (95 / 8985)	5.2 (831 / 15956)
North America	20.3 (42 / 207)	0.0 (0 / 383)	0.5 (4 / 747)	3.4 (46 / 1337)
Central & South America	36.6 (266 / 727)	1.7 (13 / 761)	1.4 (26 / 1859)	9.1 (305 / 3347)
Caribbean	43.5 (64 / 147)	1.5 (37 / 2470)	1.1 (38 / 3566)	2.2 (139 / 6183)
North Africa & Middle East	9.7 (28 / 288)	0.8 (21 / 2715)	0.5 (8 / 1482)	1.3 (57 / 4485)
Sub-Saharan Africa	28.5 (137 / 481)	7.4 (374 / 5039)	12.8 (753 / 5889)	11.1 (1264 / 11409)
South Asia	11.2 (21 / 187)	0.5 (7 / 1350)	0.3 (2 / 711)	1.3 (30 / 2248)
East & South East Asia	23.0 (78 / 339)	2.0 (11 / 547)	1.3 (22 / 1735)	4.2 (111 / 2621)
Australasia	24.4 (91 / 373)	0.1 (1 / 782)	0.3 (3 / 1109)	4.2 (95 / 2264)
Total[‡]	23.3 (3931 / 16837)	1.1 (788 / 74561)	1.3 (1215 / 90303)	3.3 (5934 / 181701)

* HIV prevalence (number HIV-1 positive/total tested) is given as a percentage.

[†] Excludes Injecting Drug Users.

[‡] Excludes specimens where country of birth was not recorded.

GUM-16: GUM clinic attendees - overall HIV prevalence* by nationality

Scotland (Glasgow clinics only): 2007 and 2008[‡] combined

Nationality	Male heterosexuals [†]		Female heterosexuals [†]		All exposure categories [†]	
UK	0.16%	(7 / 4261)	0.00%	(0 / 3856)	0.59%	(57 / 9591)
Rest of Europe	0.00%	(0 / 123)	0.00%	(0 / 155)	0.90%	(3 / 334)
Americas	0.00%	(0 / 21)	0.00%	(0 / 40)	2.78%	(2 / 72)
Africa	6.60%	(7 / 106)	9.73%	(11 / 113)	7.66%	(18 / 235)
Asia	0.00%	(0 / 67)	0.00%	(0 / 28)	0.89%	(1 / 112)
Oceania	0.00%	(0 / 17)	0.00%	(0 / 12)	2.86%	(1 / 35)
Total	0.30%	(14 / 4595)	0.26%	(11 / 4204)	0.79%	(82 / 10379)

* HIV prevalence (number HIV-1 positive/total tested) is given as a percentage. A small proportion of specimens have insufficient sera to be included in the unlinked anonymous testing. This means that if the GUM Anon survey detects no individuals with undiagnosed HIV during a particular year, it is not possible to conclude that none of the individuals attending the GUM clinics during the year in question had an undiagnosed HIV infection.

[†] Excludes specimens where Nationality was not recorded.

[‡] Study terminated in Scotland in 2008.

GUM-17: Injecting drug users* attending GUM clinics - overall HIV prevalence[†]

United Kingdom: 2000-2009

Area	Males		Females	
London				
2000	8.5	(12 / 141)	1.8	(2 / 109)
2001	12.5	(18 / 144)	1.1	(1 / 88)
2002	9.5	(16 / 169)	4.8	(6 / 126)
2003	8.3	(12 / 145)	1.7	(2 / 119)
2004	4.5	(5 / 111)	2.3	(2 / 88)
2005	6.6	(6 / 91)	4.5	(4 / 89)
2006	13.0	(19 / 146)	9.5	(9 / 95)
2007	22.3	(37 / 166)	13.5	(14 / 104)
2008	15.2	(15 / 99)	7.4	(7 / 95)
2009	8.9	(4 / 45)	6.4	(3 / 47)
Rest of E, W, and NI				
2000	1.3	(3 / 238)	0.0	(0 / 101)
2001	1.5	(3 / 206)	0.0	(0 / 86)
2002	1.9	(4 / 216)	0.0	(0 / 89)
2003	0.9	(2 / 227)	0.0	(0 / 103)
2004	0.9	(2 / 214)	0.0	(0 / 93)
2005	1.1	(2 / 179)	0.0	(0 / 78)
2006	3.6	(7 / 194)	2.3	(2 / 88)
2007	3.9	(10 / 255)	1.1	(1 / 90)
2008	4.3	(7 / 162)	1.3	(1 / 80)
2009	3.1	(4 / 127)	1.9	(1 / 54)
Scotland[§]				
2000	1.2	(2 / 170)	0.0	(0 / 75)
2001	0.0	(0 / 116)	1.4	(1 / 72)
2002	0.0	(0 / 131)	0.0	(0 / 58)
2003	0.7	(1 / 152)	0.0	(0 / 73)
2004	0.6	(1 / 154)	0.0	(0 / 64)
2005	0.0	(0 / 33)	0.0	(0 / 15)
2006	2.6	(1 / 39)	0.0	(0 / 14)
2007	0.0	(0 / 18)	0.0	(0 / 13)
2008	0.0	(0 / 37)	0.0	(0 / 17)
2009	N/A		N/A	

* Injecting drug users who are also MSM are not included since their risk of acquiring HIV is more consistent with that of sex between men than through injecting drug use.

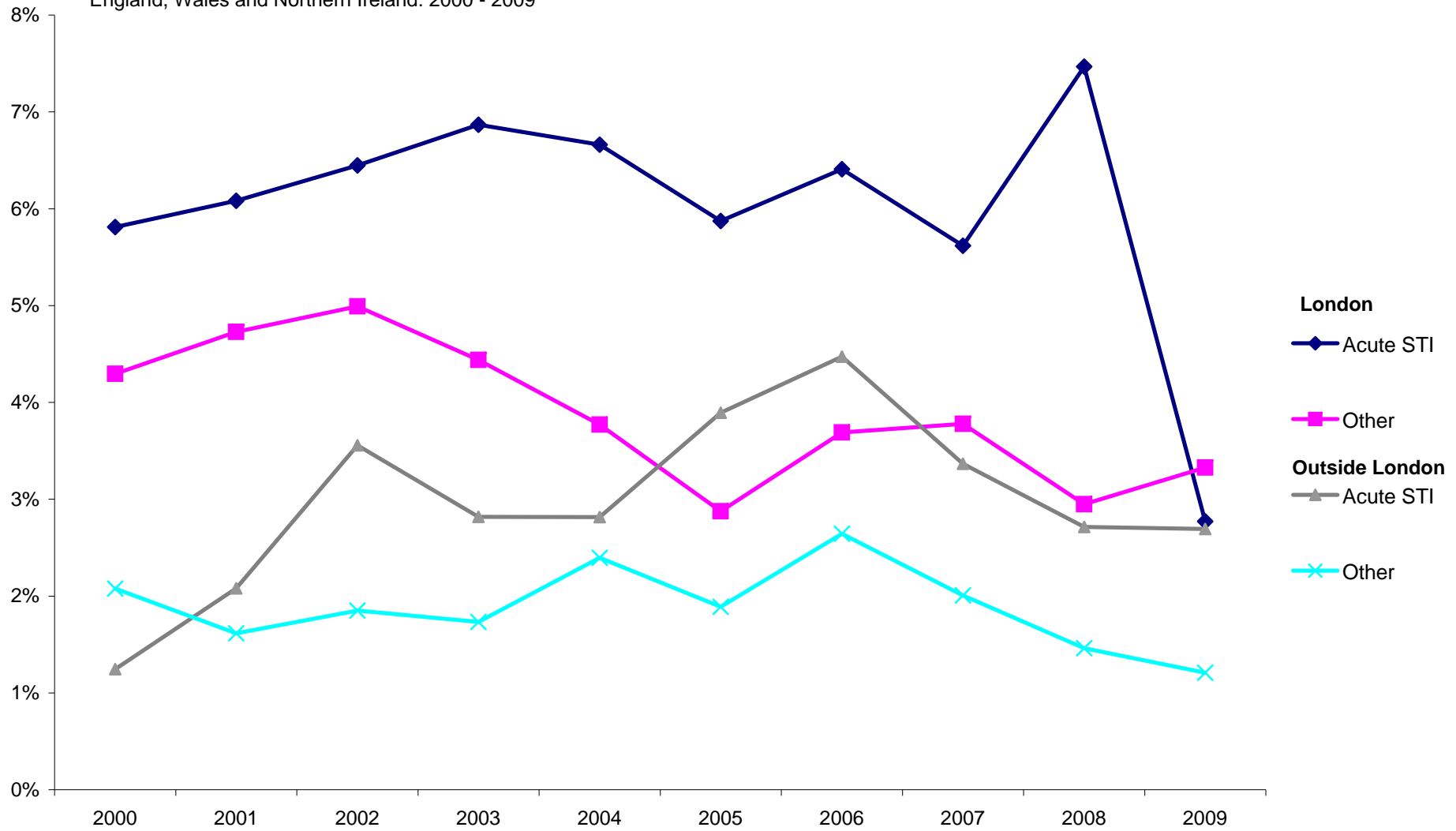
[†] HIV prevalence (number HIV-1 positive/total tested) is given as a percentage.

[§] Between 2002 and 2004, clinic data from Edinburgh has been excluded. From 2005, data is derived from one clinic in Glasgow

N/A Not available. Study terminated in Scotland in 2008.

Gum-18: Men who have sex with men attending GUM clinics - previously undiagnosed* HIV prevalence by clinical diagnosis

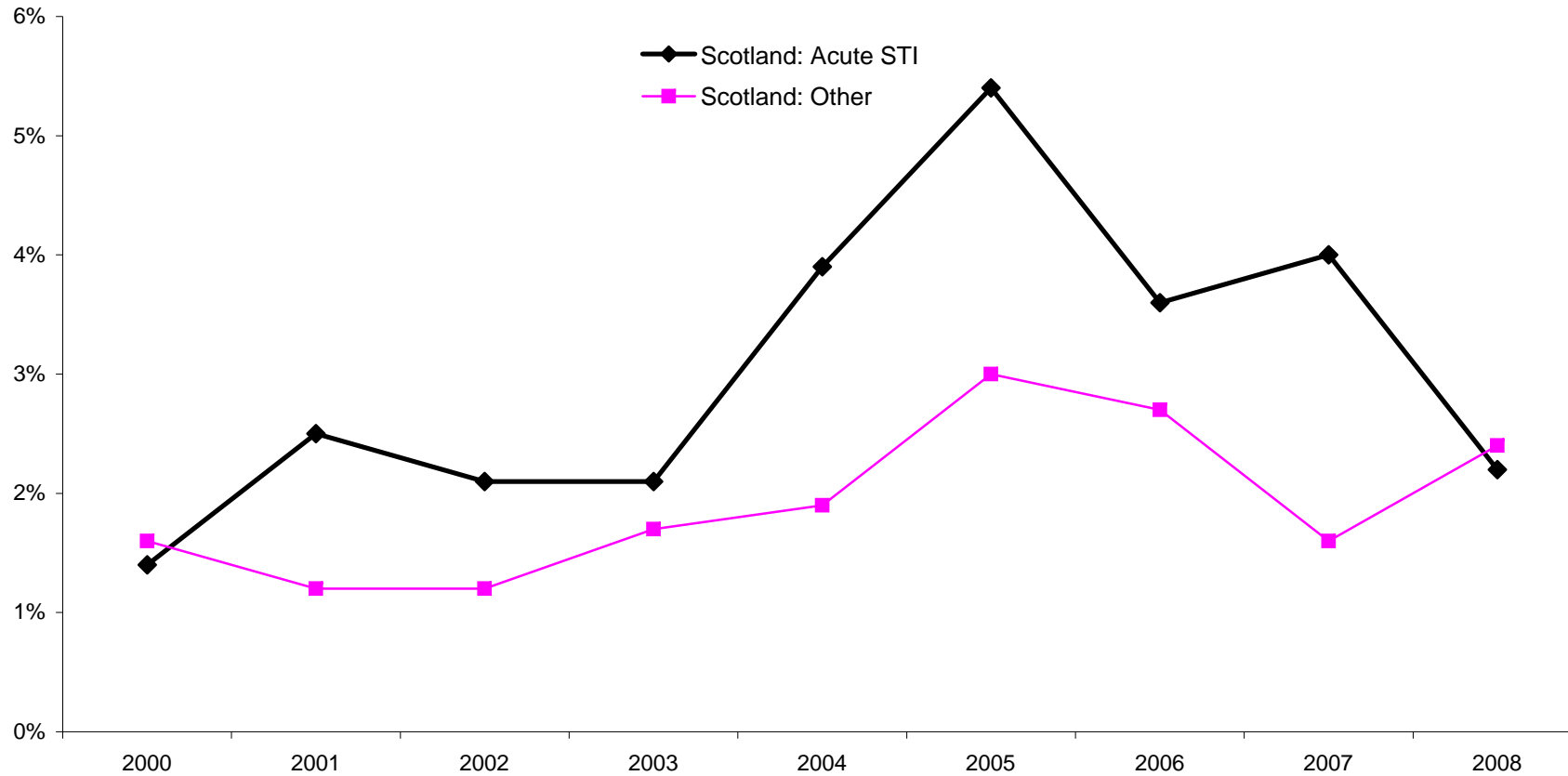
England, Wales and Northern Ireland: 2000 - 2009



* Previously undiagnosed HIV infection includes those diagnosed at the clinic attendance and those remaining undiagnosed but excludes those diagnosed earlier.

GUM-19: Men who have sex with men attending GUM clinics - prevalence of previously undiagnosed* HIV infection by clinical diagnosis

Scotland[§]: 2000-2008[‡]



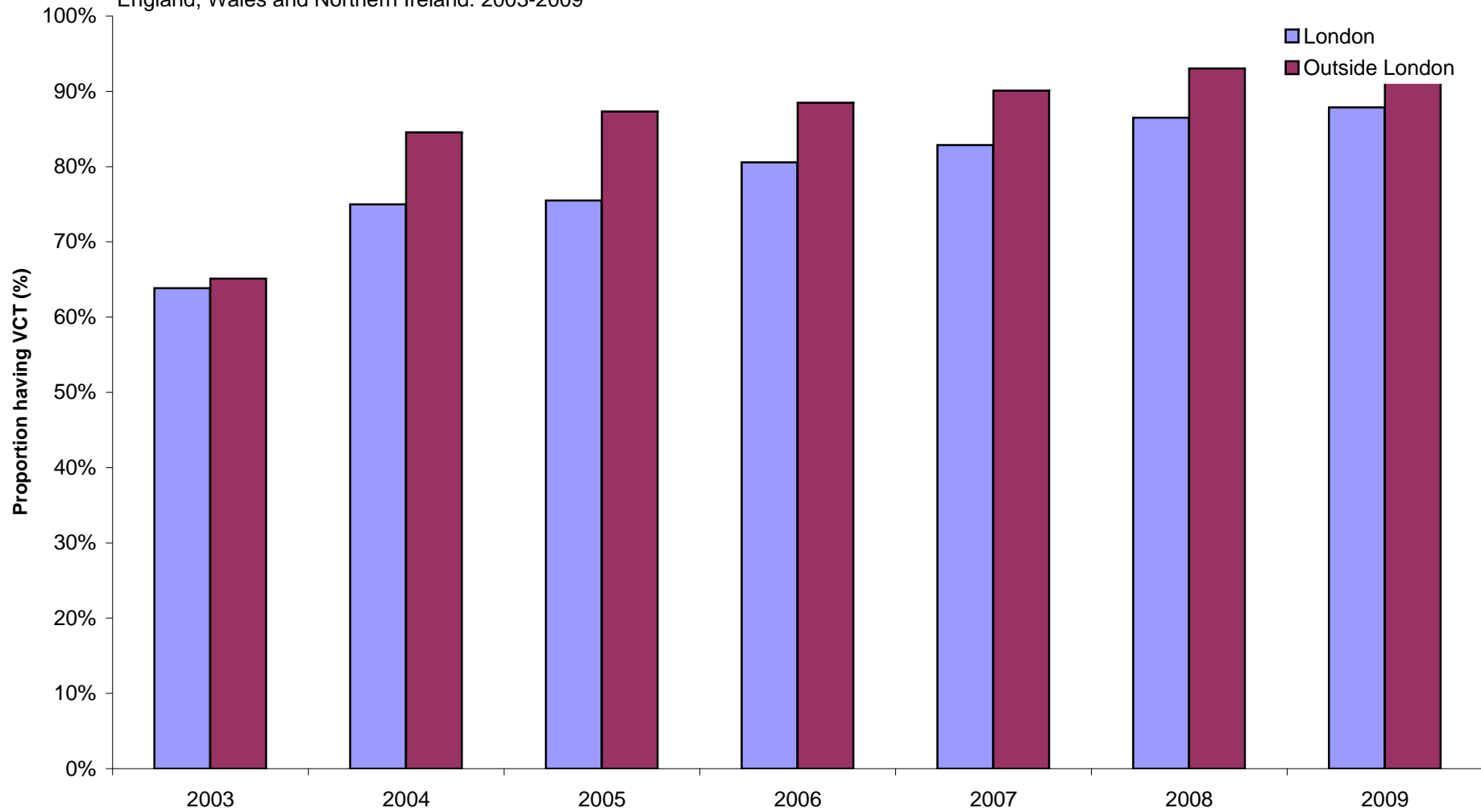
* Previously undiagnosed HIV infection includes those diagnosed at the clinic attendance and those remaining undiagnosed but excludes those diagnosed earlier.

[§] Between 2002 and 2004, clinic data from Edinburgh has been excluded. From 2005, data is derived from one clinic in Glasgow

[‡] Study terminated in Scotland in 2008

GUM-20: Men who have sex with men attending GUM clinics - proportion (%) having a voluntary confidential HIV test* at the clinic visit

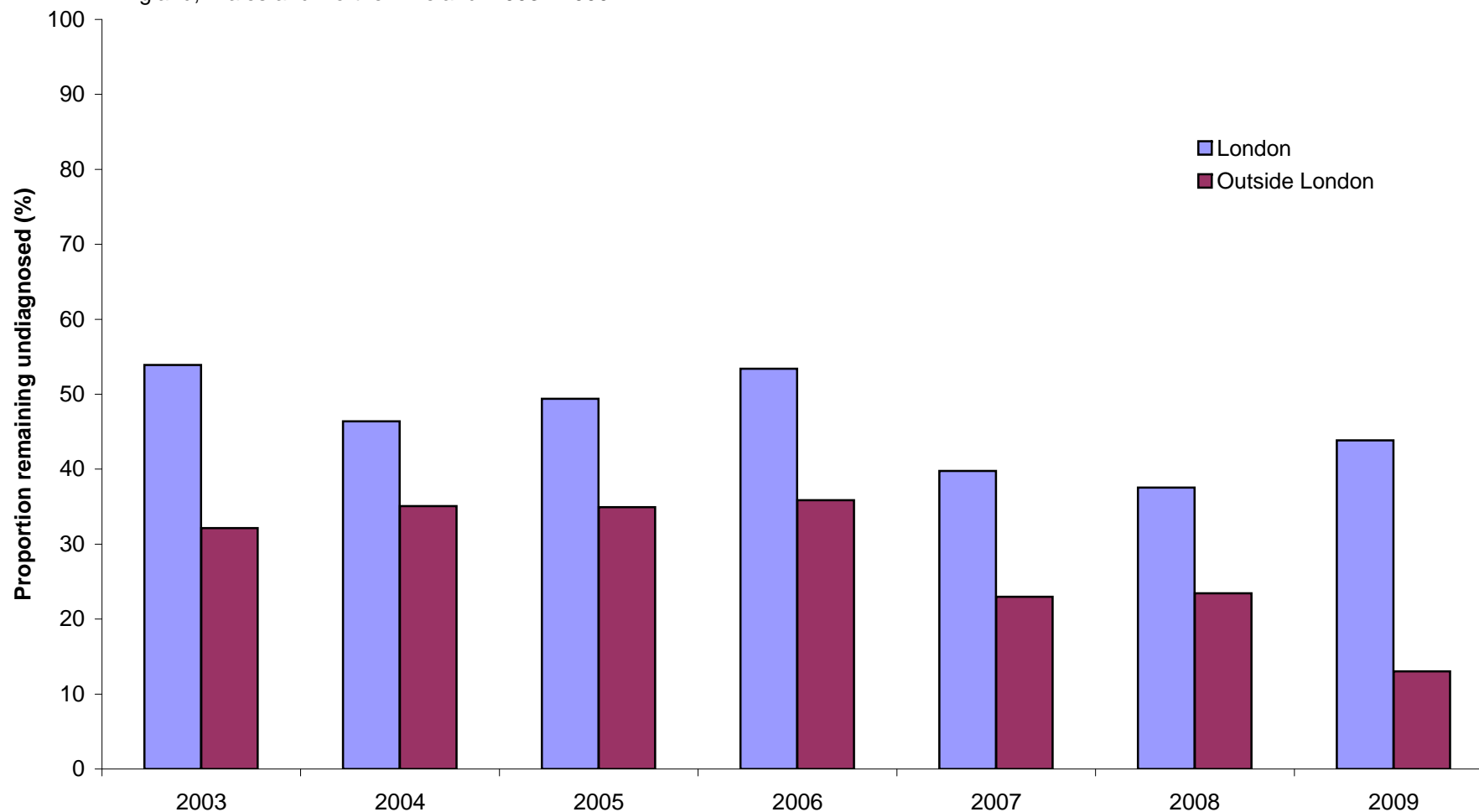
England, Wales and Northern Ireland: 2003-2009



*Excludes those that were previously diagnosed. Patients for whom conflicting information on HIV testing was collected were excluded.

GUM-21: Men who have sex with men attending GUM clinics - proportion (%) of previously undiagnosed* HIV infections remaining undiagnosed after the clinic visit

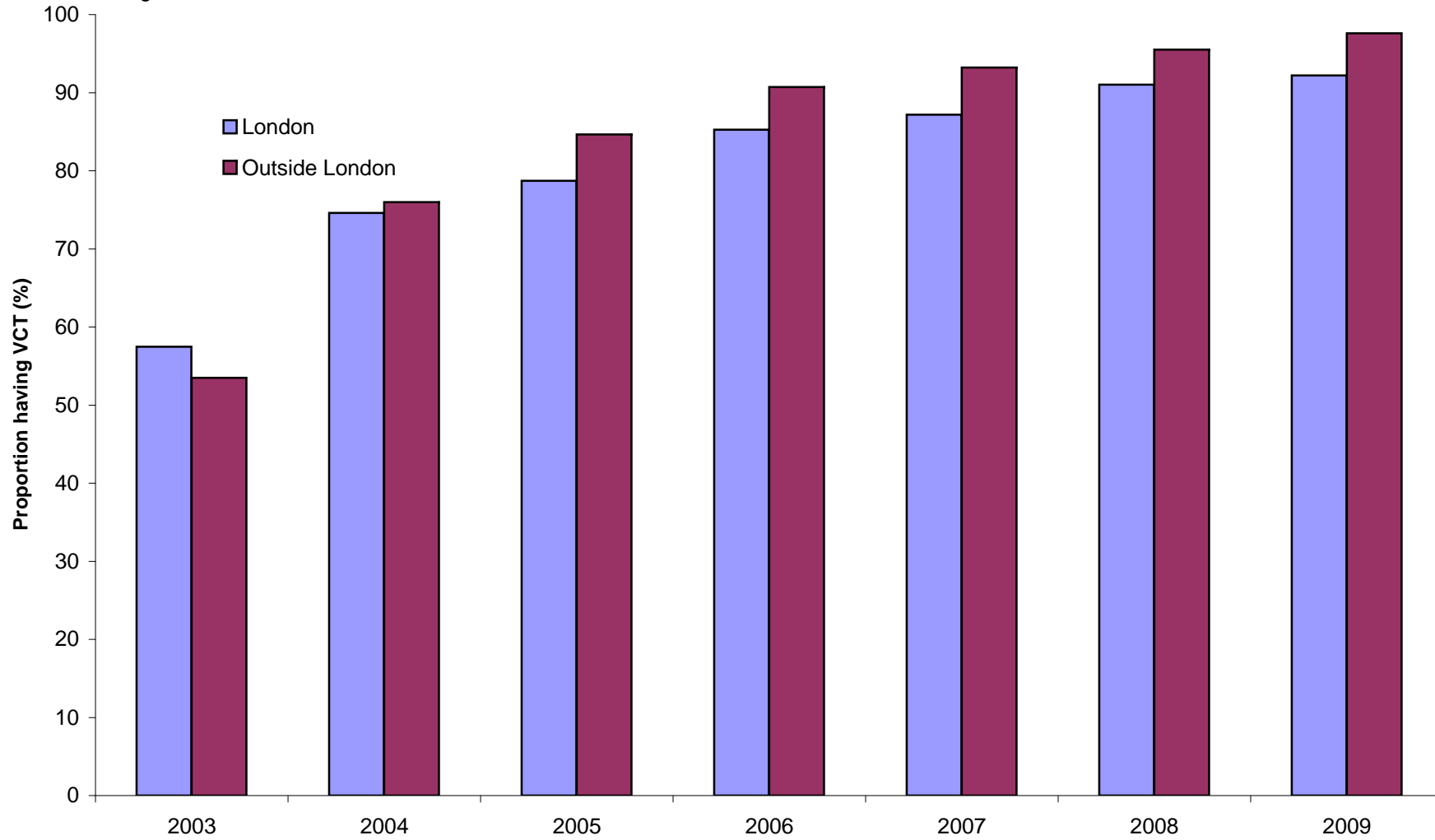
England, Wales and Northern Ireland: 2003 - 2009



*Previously undiagnosed HIV infection includes those diagnosed at the clinic attendance and those remaining undiagnosed but excludes those diagnosed earlier. Patients for whom conflicting information on HIV testing was collected were excluded.

GUM-22: Heterosexuals attending GUM clinics - proportion (%) having a voluntary confidential HIV test* at the clinic visit

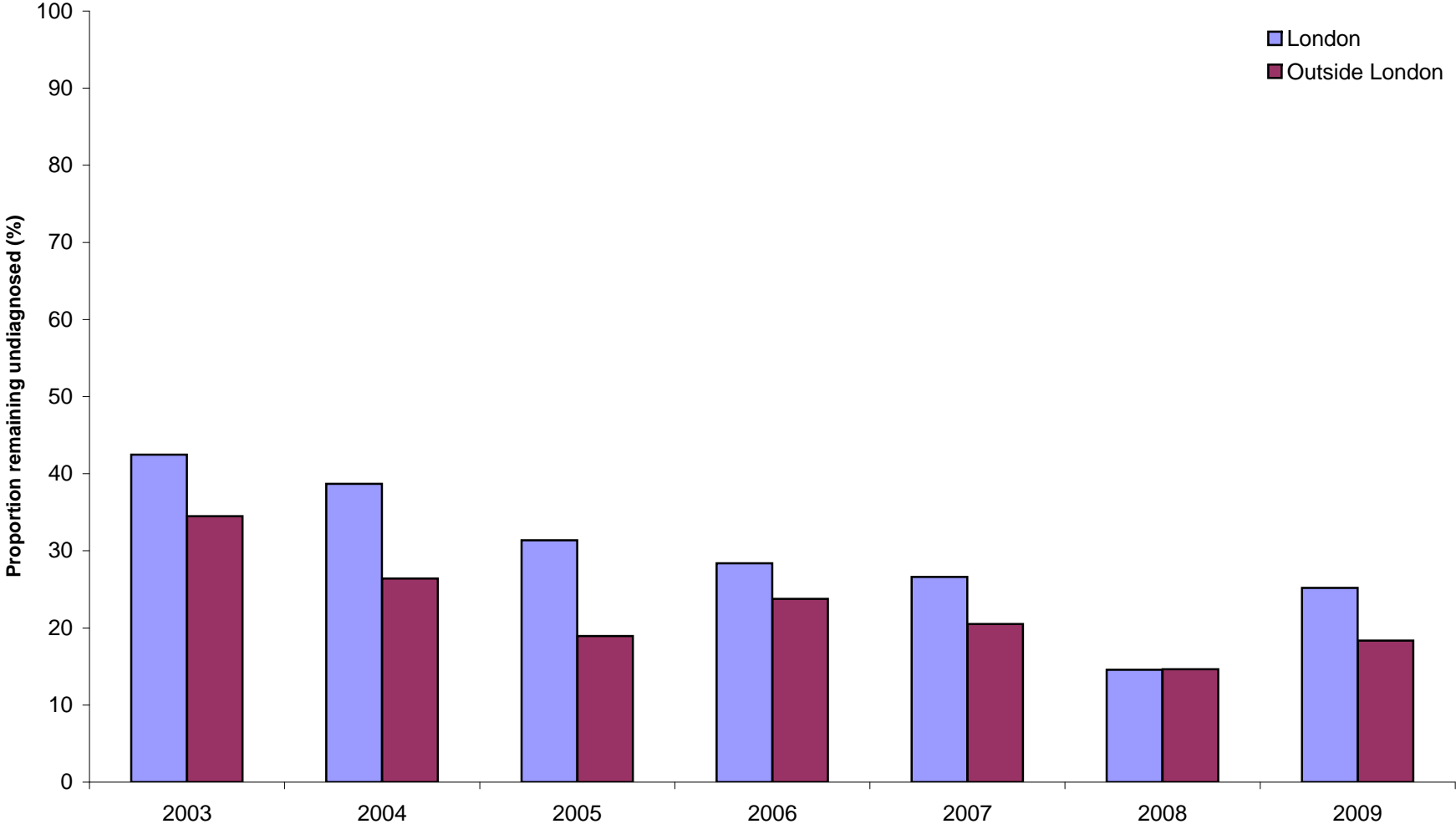
England, Wales and Northern Ireland: 2003 - 2009



*Excludes those that were previously diagnosed and those for whom conflicting information on HIV testing was collected.

GUM-23: Heterosexuals attending GUM clinic - proportion (%) of previously undiagnosed* HIV infections remaining undiagnosed after the clinic visit

England, Wales and Northern Ireland: 2003 - 2009



*Previously undiagnosed HIV infection includes those diagnosed at the clinic attendance and those remaining undiagnosed but excludes those diagnosed earlier. Patients for whom conflicting information on HIV testing was collected were excluded.