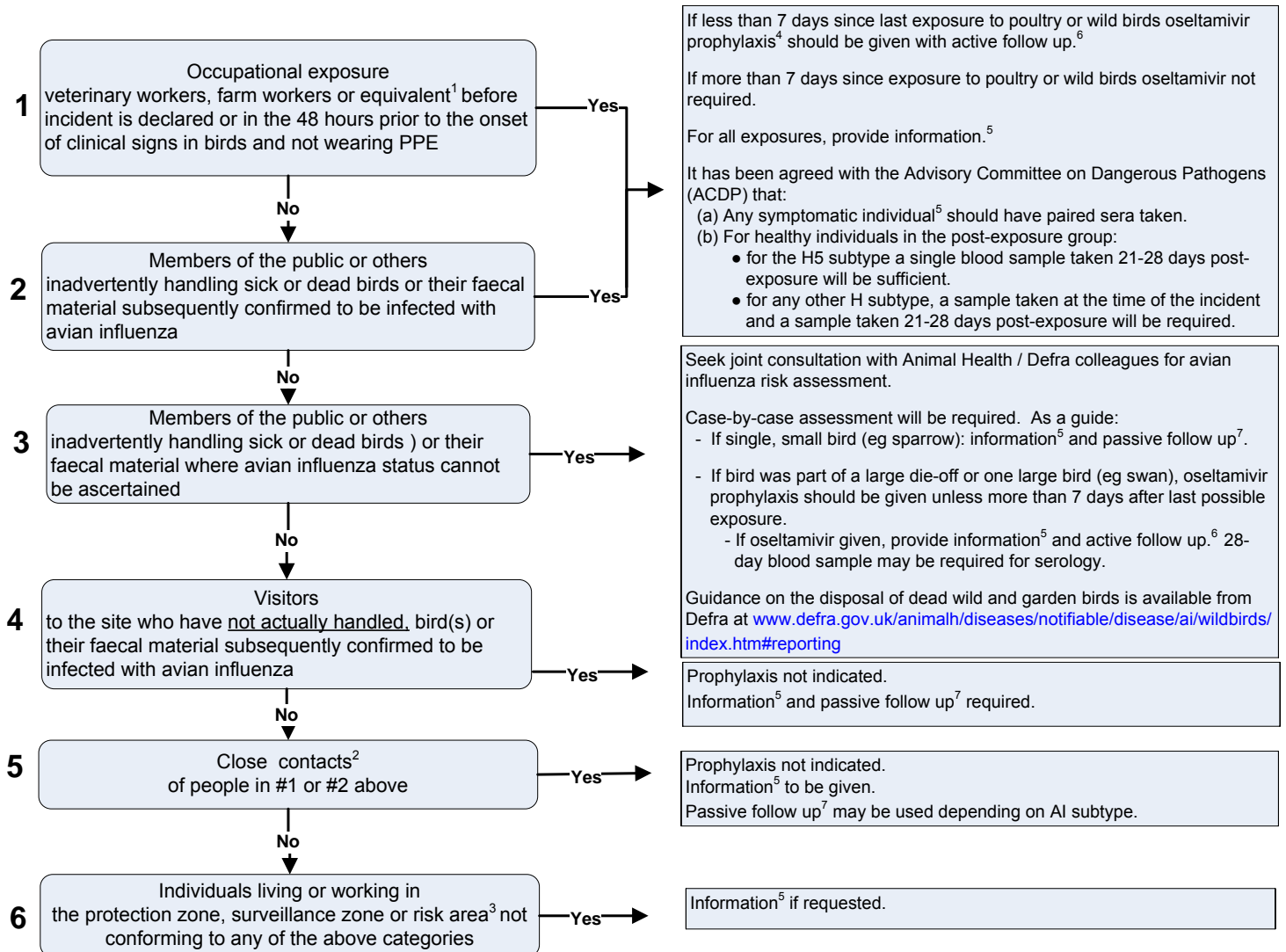


# Exposure without Personal Protective Equipment (PPE): Management of people exposed to birds where avian influenza infection is suspected/confirmed and who have not used PPE at time of exposure



1 January 2009. Please check for updates at:

[http://www.hpa.org.uk/webw/HPAweb&HPAwebStandard/HPAweb\\_C/1195733851442?p=1160495617107](http://www.hpa.org.uk/webw/HPAweb&HPAwebStandard/HPAweb_C/1195733851442?p=1160495617107)



**If a close contact or exposed individual becomes unwell, the local HPU should liaise with the Pandemic Influenza Office in the first instance. If unavailable, contact the consultant in the Respiratory & Systemic Infections Department or the Virus Reference Laboratory at Cfl to discuss next steps.**

#### Footnotes:

1 People who live or work on the affected poultry premises or those working for voluntary organisations, local authorities and whose job involves handling wild birds.

2 A close contact is defined as an individual sharing a household with, or remaining unprotected whilst within speaking distance (<1 metre) of or caring for a patient with confirmed or strongly suspected H5N1 infection. (WHO Rapid Advice Guidelines on pharmacological management of humans infected with avian influenza A(H5N1) virus, May 2006 [www.who.int/csr/disease/avian\\_influenza/guidelines/pharmamanagement/en/index.html](http://www.who.int/csr/disease/avian_influenza/guidelines/pharmamanagement/en/index.html) )

3 Protection zone, surveillance zone, restricted zone, control area, surveillance area or risk area, as defined by Defra. ([www.defra.gov.uk](http://www.defra.gov.uk))

4 Refer to dosing schedule for oseltamivir prophylaxis (<http://www.bnf.org/bnf/bnf/current/119743.htm>).

5 See Department of Health [www.dh.gov.uk](http://www.dh.gov.uk); HPA [www.hpa.org.uk](http://www.hpa.org.uk); Defra [www.defra.gov.uk](http://www.defra.gov.uk)

6 HPU to coordinate active follow up: daily assessments for up to 7 days after last contact.

7 Passive follow up: provision of information to individual (or responsible carer) and the provision of contact details with the request that any febrile respiratory or other unexplained illness within 7 days of last contact be reported (24 hour telephone reporting).

**In case of uncertainty, discuss with local Health Protection Unit.**