

Supplementary Data Tables, Annual Report from the NHS Blood and Transplant/Health Protection Agency Epidemiology Unit 2008.

Summary

This document contains supplementary data to those presented in the NHS Blood and Transplant (NHSBT)/Health Protection Agency (HPA) Epidemiology Unit Annual Report 2008, for the following surveillance schemes:

(i)	Surveillance of Infections in Blood Donors	Page 2
(ii)	Surveillance of Infections in Tissue and Cell Donors	Page 13
(iii)	Surveillance of Transfusion Transmitted Infections	Page 14

The document is designed to be read in conjunction with the Annual Report and also the 'Data Sources and Methods' document which provides more detailed information on how the data are collected and processed.

We are happy for data contained in this document to be used. Please use the suggested citation below and acknowledge the NHSBT/HPA Epidemiology Unit. A slide set of the tables featured in both this document and the main report is also available under 'References and Publications' at the following link: http://www.hpa.org.uk/infections/topics_az/BIBD

Suggested Citation:

Safe Supplies: Testing the Nation. Annual Report from the NHS Blood and Transplant/Health Protection Agency Centre for Infections Epidemiology Unit, 2008. London, October 2009.
http://www.hpa.org.uk/infections/topics_az/BIBD/publications.htm

1. BLOOD DONOR SURVEILLANCE

Table 1.1: Characteristics and probable exposure history of HBV infected blood donors by sex, UK (excl Scotland) and Republic of Ireland: 2008.

Characteristics of infected donors	Newly tested ¹				Previously tested ¹				All	
	Male	Female	Total	%	Male	Female	Total	%	Total	%
Number (seroconverters)	63	15	78	<i>100</i>	1(1)	2(2)	3	<i>100</i>	81	<i>100</i>
Prevalence per 100 000 donors	61.6	11.5	34.2		0.1	0.1	0.1		3.4	
Mean age	32	27	30		23	33	29		30	
Ethnic group										
White	16	6	22	<i>28</i>	1	2	3	<i>100</i>	25	<i>31</i>
Black-Caribbean	0	0	0	<i>0</i>	0	0	0	<i>0</i>	0	<i>0</i>
Black-African	18	1	19	<i>24</i>	0	0	0	<i>0</i>	19	<i>23</i>
Black-other	1	0	1	<i>1</i>	0	0	0	<i>0</i>	1	<i>1</i>
Indian/Pakistani/Bangladeshi	12	2	14	<i>18</i>	0	0	0	<i>0</i>	14	<i>17</i>
Chinese	4	3	7	<i>9</i>	0	0	0	<i>0</i>	7	<i>9</i>
Asian other	6	1	7	<i>9</i>	0	0	0	<i>0</i>	7	<i>9</i>
Mixed and other	0	1	1	<i>1</i>	0	0	0	<i>0</i>	1	<i>1</i>
Not known	6	1	7	<i>9</i>	0	0	0	<i>0</i>	7	<i>9</i>
Area of birth										
UK	3	3	6	<i>8</i>	0	1	1	<i>33</i>	7	<i>9</i>
Europe excl UK	12	5	17	<i>22</i>	1	1	2	<i>67</i>	19	<i>23</i>
Africa	20	1	21	<i>27</i>	0	0	0	<i>0</i>	21	<i>26</i>
Asia	20	5	25	<i>32</i>	0	0	0	<i>0</i>	25	<i>31</i>
North America	0	0	0	<i>0</i>	0	0	0	<i>0</i>	0	<i>0</i>
Latin America and Caribbean	1	0	1	<i>1</i>	0	0	0	<i>0</i>	1	<i>1</i>
Australasia	1	0	1	<i>1</i>	0	0	0	<i>0</i>	1	<i>1</i>
Not known	6	1	7	<i>9</i>	0	0	0	<i>0</i>	7	<i>9</i>
Probable exposure category										
Injecting drug use	0	0	0	<i>0</i>	0	0	0	<i>0</i>	0	<i>0</i>
Non IDU	0	0	0	<i>0</i>	0	0	0	<i>0</i>	0	<i>0</i>
Sex between men	0	0	0	<i>0</i>	0	0	0	<i>0</i>	0	<i>0</i>
Sex between men and women	5	0	5	<i>6</i>	1	2	3	<i>100</i>	8	<i>10</i>
Blood/tissue transfer, blood product treatment	1	0	1	<i>1</i>	0	0	0	<i>0</i>	1	<i>1</i>
Blood contact possible (inc piercing)	7	2	9	<i>12</i>	0	0	0	<i>0</i>	9	<i>11</i>
Blood contact documented	0	0	0	<i>0</i>	0	0	0	<i>0</i>	0	<i>0</i>
Mother to infant ²	2	3	5	<i>6</i>	0	0	0	<i>0</i>	5	<i>6</i>
Family/household contact	0	0	0	<i>0</i>	0	0	0	<i>0</i>	0	<i>0</i>
Born in an endemic country ³	40	7	47	<i>60</i>	0	0	0	<i>0</i>	47	<i>58</i>
No identified exposure ⁴	2	2	4	<i>5</i>	0	0	0	<i>0</i>	4	<i>5</i>
Incomplete follow up	6	1	7	<i>9</i>	0	0	0	<i>0</i>	7	<i>9</i>

¹ As classified according to evidence supplied to the NHSBT/HPA Epidemiology Unit

² Born to a hepatitis B infected mother or sibling known to be positive

³ Probable risk in the absence of any other information

⁴ No identified exposure despite interview

Table 1.2: Characteristics and probable exposure history of HCV infected blood donors by sex, UK (excl Scotland) and Republic of Ireland: 2008.

Characteristics of infected donors	Newly tested ¹				Previously tested ¹				All	
	Male	Female	Total	%	Male	Female	Total	%	Total	%
Number (seroconverters)	33	36	69	100	4(4)	0	4	100	73	100
Prevalence per 100 000 donors	32.2	27.7	30.3		0.2	0.0	0.1		4.6	
Mean age	40	37	38		39	0	39		38	
Ethnic group										
White	22	27	49	71	4	0	4	100	53	73
Black-Caribbean	0	0	0	0	0	0	0	0	0	0
Black-African	1	1	2	3	0	0	0	0	2	3
Black-other	0	0	0	0	0	0	0	0	0	0
Indian/Pakistani/Bangladeshi	4	4	8	12	0	0	0	0	8	11
Chinese	0	0	0	0	0	0	0	0	0	0
Asian other	1	1	2	3	0	0	0	0	2	3
Mixed and other	1	1	2	3	0	0	0	0	2	3
Not known	4	2	6	9	0	0	0	0	6	8
Area of birth										
UK	14	18	32	46	2	0	2	50	34	47
Europe excl UK	5	8	13	19	0	0	0	0	13	18
Africa	2	0	2	3	0	0	0	0	2	3
Asia	7	6	13	19	0	0	0	0	13	18
North America	0	0	0	0	0	0	0	0	0	0
Latin America and Caribbean	1	1	2	3	0	0	0	0	2	3
Australasia	0	0	0	0	0	0	0	0	0	0
Not known	4	3	7	10	2	0	2	50	9	12
Probable exposure category										
Injecting drug use	7	7	14	20	1	0	1	25	15	21
Non IDU	2	1	3	4	1	0	1	25	4	5
Sex between men	2	0	2	3	0	0	0	0	2	3
Sex between men and women	0	3	3	4	1	0	1	25	4	5
Blood/tissue transfer, blood product treatment	2	2	4	6	0	0	0	0	4	5
Blood contact possible (inc piercing)	7	10	17	25	0	0	0	0	17	23
Blood contact documented	0	0	0	0	0	0	0	0	0	0
Mother to infant ²	0	0	0	0	0	0	0	0	0	0
Family/household contact	0	1	1	1	1	0	1	25	2	3
Born in an endemic country ³	4	4	8	12	0	0	0	0	8	11
No identified exposure ⁴	2	7	9	13	0	0	0	0	9	12
Incomplete follow up	7	1	8	12	0	0	0	0	8	11

¹ As classified according to evidence supplied to the NHSBT/HPA Epidemiology Unit

² Born to a hepatitis C infected mother or sibling known to be positive

³ Probable risk in the absence of any other information

⁴ No identified exposure despite interview

Table 1.3: Characteristics and probable exposure history of HIV infected blood donors by sex, UK (excl Scotland) and Republic of Ireland: 2008.

Characteristics of infected donors	Male	Female	Total	%	Male	Female	Total	%	Total	%
Number (seroconverters)	8	7	15	100	8(7)	5(5)	13	100	28	100
Prevalence per 100 000 donors	7.8	5.4	6.6		0.5	0.2	0.4		1.8	
Mean age	33	32	33		38	37	38		35	
Ethnic group										
White	3	3	6	40	6	3	9	69	15	54
Black-Caribbean	0	0	0	0	0	0	0	0	0	0
Black-African	3	2	5	33	0	0	0	0	5	18
Black-other	0	1	1	7	0	0	0	0	1	4
Indian/Pakistani/Bangladeshi	1	0	1	7	0	1	1	8	2	7
Chinese	0	0	0	0	0	0	0	0	0	0
Asian other	1	0	1	7	0	0	0	0	1	4
Mixed and other	0	1	1	7	0	1	1	8	2	7
Not known	0	0	0	0	2	0	2	15	2	7
Area of birth										
UK	1	4	5	33	7	4	11	85	16	57
Europe excl UK	2	0	2	13	0	0	0	0	2	7
Africa	3	3	6	40	0	0	0	0	6	21
Asia	2	0	2	13	0	0	0	0	2	7
North America	0	0	0	0	0	0	0	0	0	0
Latin America and Caribbean	0	0	0	0	0	0	0	0	0	0
Australasia	0	0	0	0	0	0	0	0	0	0
Not known	0	0	0	0	1	1	2	15	2	7
Probable exposure category										
Injecting drug use	0	0	0	0	0	0	0	0	0	0
Non IDU	0	0	0	0	0	0	0	0	0	0
Sex between men	3	0	3	20	1	0	1	8	4	14
Sex between men and women	3	5	8	53	4	5	9	69	17	61
Food/tissue transfer, blood product treatment	0	0	0	0	0	0	0	0	0	0
Blood contact possible (inc piercing)	1	0	1	7	1	0	1	8	2	7
Blood contact documented	1	0	1	7	0	0	0	0	1	4
Mother to infant ²	0	0	0	0	0	0	0	0	0	0
Family/household contact	0	0	0	0	0	0	0	0	0	0
Born in an endemic country ³	0	0	0	0	0	0	0	0	0	0
No identified exposure ⁴	0	1	1	7	1	0	1	8	2	7
Incomplete follow up	0	1	1	7	1	0	1	8	2	7

¹ As classified according to evidence supplied to the NHSBT/HPA Epidemiology Unit

² Born to a HIV infected mother or sibling known to be positive

³ Probable risk in the absence of any other information

⁴ No identified exposure despite interview

Table 1.4: Characteristics and probable exposure history of HTLV infected blood donors by sex, UK (excl Scotland) and Republic of Ireland: 2008.

Characteristics of infected donors	Newly tested ¹				Previously tested ¹				All		
	Male	Female	Total	%	Male	Female	Total	%	Total	%	
Number (seroconverters)	4	9	13	100	0	1(1)	1	100	14	100	
Prevalence per 100 000 donors	3.9	6.9	5.7		0.0	0.0	0.0		0.9		
Mean age	32	46	39		0	28	28		34		
Ethnic group											
White	1	5	6	46	Information not disclosed due to low number						
Black-Caribbean	0	4	4	31							
Black-African	0	0	0	0							
Black-other	0	0	0	0							
Indian/Pakistani/Bangladeshi	1	0	1	8							
Chinese	0	0	0	0							
Asian other	0	0	0	0							
Mixed and other	1	0	1	8							
Not known	1	0	1	8							
Area of birth	100										
UK	1	5	6	46	Information not disclosed due to low number						
Europe excl UK	0	2	2	15							
Africa	0	0	0	0							
Asia	1	0	1	8							
North America	0	0	0	0							
Latin America and Caribbean	1	1	2	15							
Australasia	0	0	0	0							
Not known	1	1	2	15							
Probable exposure category											
Injecting drug use	1	0	1	8	0	0	0	0	1	7	
Non IDU	0	0	0	0	0	0	0	0	0	0	
Sex between men	0	0	0	0	0	0	0	0	0	0	
Sex between men and women	0	5	5	38	0	1	1	100	6	43	
Blood/tissue transfer, blood product treatment	0	0	0	0	0	0	0	0	0	0	
Blood contact possible (inc piercing)	0	0	0	0	0	0	0	0	0	0	
Blood contact documented	0	0	0	0	0	0	0	0	0	0	
Mother to infant ²	0	3	3	23	0	0	0	0	3	21	
Family/household contact	0	0	0	0	0	0	0	0	0	0	
Born in an endemic country ³	2	1	3	23	0	0	0	0	3	21	
No identified exposure ⁴	0	0	0	0	0	0	0	0	0	0	
Incomplete follow up	1	0	1	8	0	0	0	0	1	7	

¹ As classified according to evidence supplied to the NHSBT/HPA Epidemiology Unit

² Born to an HTLV infected mother or sibling known to be positive

³ Probable risk in the absence of any other information

⁴ No identified exposure despite interview

Table 1.5: Characteristics and probable exposure history of treponema infected blood donors by sex, UK (excl Scotland) and Republic of Ireland: 2008.

Characteristics of infected donors	Newly tested ¹				Previously tested ¹				All	
	Male	Female	Total	%	Male	Female	Total	%	Total	%
Number (IgM positive)	41 (7)	22 (3)	63	100	19 (10)	8 (1)	27	100	90	100
Prevalence per 100 000 donors	40.1	16.9	27.6		1.2	0.4	0.7		3.8	
Mean age	37	43	39		41	44	42		40	
Ethnic group										
White	20	16	36	57	17	6	23	85	59	66
Black-Caribbean	1	1	2	3	0	1	1	4	3	3
Black-African	7	0	7	11	0	1	1	4	8	9
Black-other	1	0	1	2	0	0	0	0	1	1
Indian/Pakistani/Bangladeshi	3	2	5	8	0	0	0	0	5	6
Chinese	1	0	1	2	0	0	0	0	1	1
Asian other	2	0	2	3	0	0	0	0	2	2
Mixed and other	0	0	0	0	0	0	0	0	0	0
Not known	6	3	9	14	2	0	2	7	11	12
Area of birth										
UK	15	13	28	44	9	5	14	52	42	47
Europe excl UK	6	1	7	11	2	0	2	7	9	10
Africa	8	2	10	16	0	1	1	4	11	12
Asia	6	2	8	13	0	0	0	0	8	9
North America	0	0	0	0	0	0	0	0	0	0
Latin America and Caribbean	1	2	3	5	0	1	1	4	4	4
Australasia	0	0	0	0	0	0	0	0	0	0
Not known	5	2	7	11	8	1	9	33	16	18
Probable exposure category										
Injecting drug use	0	0	0	0	0	0	0	0	0	0
Non IDU	0	0	0	0	0	0	0	0	0	0
Sex between men	0	0	0	0	1	0	1	4	1	1
Sex between men and women	15	11	26	41	7	5	12	44	38	42
Blood/tissue transfer, blood product treatment	1	0	1	2	0	0	0	0	1	1
Blood contact possible (inc piercing)	0	0	0	0	0	0	0	0	0	0
Blood contact documented	0	0	0	0	0	0	0	0	0	0
Mother to infant ²	0	0	0	0	0	0	0	0	0	0
Family/household contact	0	0	0	0	0	0	0	0	0	0
Born in an endemic country ³	2	1	3	5	0	0	0	0	3	3
No identified exposure ⁴	12	8	20	32	4	2	6	22	26	29
Incomplete follow up	11	2	13	21	7	1	8	30	21	23

¹ As classified according to evidence supplied to the NHSBT/HPA Epidemiology Unit

² Born to a syphilis infected mother or sibling known to be positive

³ Probable risk in the absence of any other information

⁴ No identified exposure despite interview

Table 1.6: Characteristics and reason for referral of donors with donations positive for anti-HBc and negative or <100 mIU/ml anti-HBs, England and north Wales: 2008.

	Newly tested ¹ for mandatory markers				Previously tested ¹ for mandatory markers				All donors			
	Male	Female	Total	%	Male	Female	Total	%	Male	Female	Total	%
Number	12	12	24	100	2	4	6	100	14	16	30	100
Mean age	37.7	38.8	38.3		45.5	49.7	48.3		38.8	41.6	40.3	
Ethnic group												
White British	2	4	6	25	1	2	3	50	3	6	9	30
White other	1	0	1	4	1	1	2	33	2	1	3	10
Black African	1	0	1	4	0	0	0	0	1	0	1	3
Black other	1	0	1	4	0	0	0	0	1	0	1	3
Pakistani/Indian/Bangladeshi	4	2	6	25	0	0	0	0	4	2	6	20
Asian other	0	1	1	4	0	0	0	0	0	1	1	3
Chinese	1	0	1	4	0	0	0	0	1	0	1	3
Mixed/other	0	1	1	4	0	0	0	0	0	1	1	3
Not known	2	4	6	25	0	1	1	17	2	5	7	23
Referral Reason												
Piercing ²	3	2	5	21	1	4	5	83	4	6	10	33
Jaundice history ³	7	9	16	67	1	0	1	17	8	9	17	57
Family/household contact	0	1	1	4	0	0	0	0	0	1	1	3
Not known	2	0	2	8	0	0	0	0	2	0	2	7

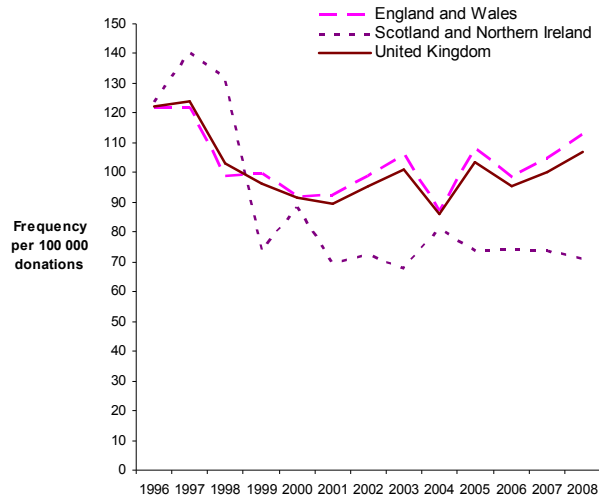
¹ As classified according to evidence supplied to the NHSBT/HPA Epidemiology Unit

² Includes tattooing and acupuncture

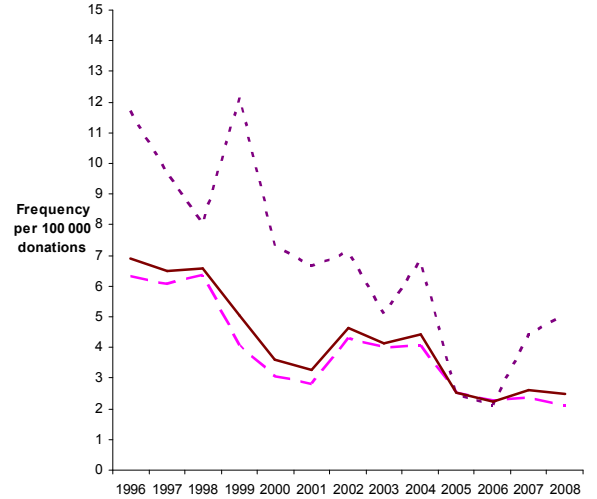
³ History of jaundice/hepatitis

Figure 1.1-1.6 (a and b): The frequency of markers of HBV, HCV, HIV, HTLV and treponemes in blood donations from new and repeat donors collected by blood centres, UK, England and Wales, Scotland and Northern Ireland: 1996-2008. Note differences in scale for new and repeat donors, and for HCV/All Infections versus other markers.

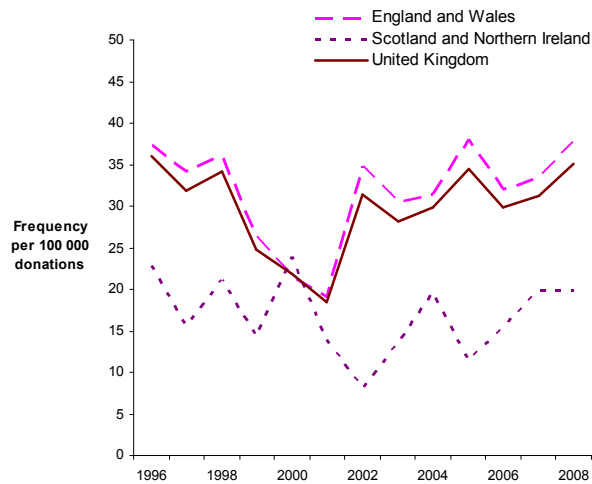
1.1a ALL infectious markers -new (higher scale)



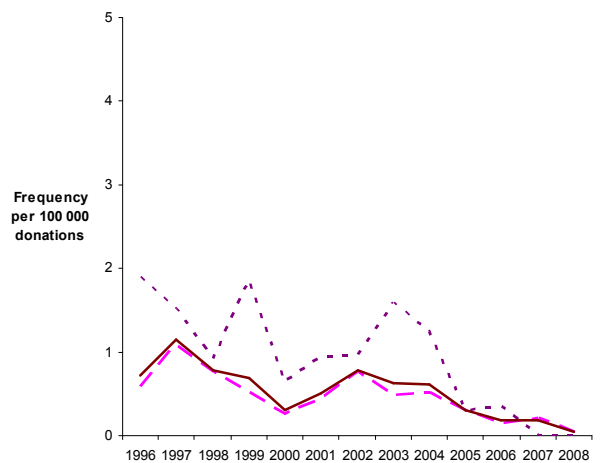
1.1b ALL infectious markers - repeat



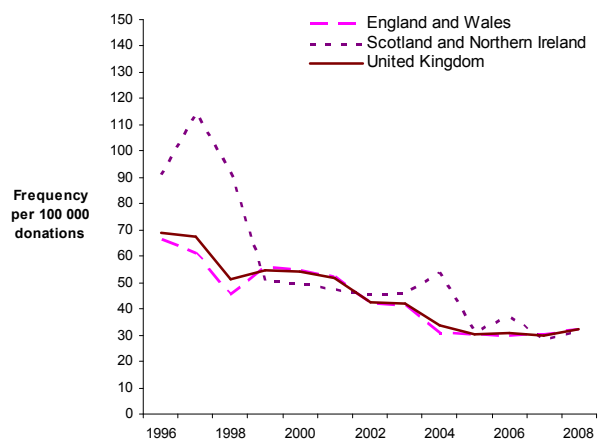
1.2a HBsAg - new



1.2b HBsAg - repeat



1.3a HCV - new (higher scale)



1.3b HCV - repeat

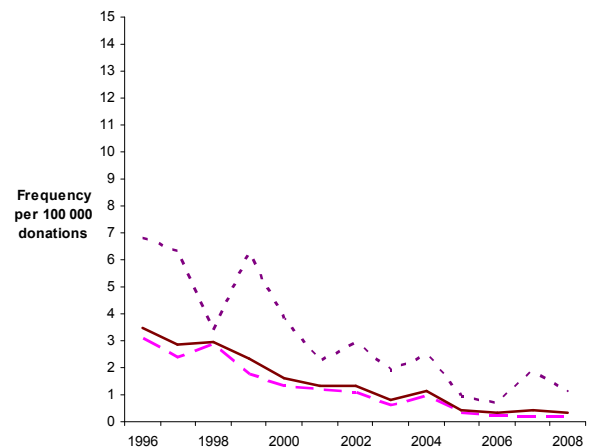
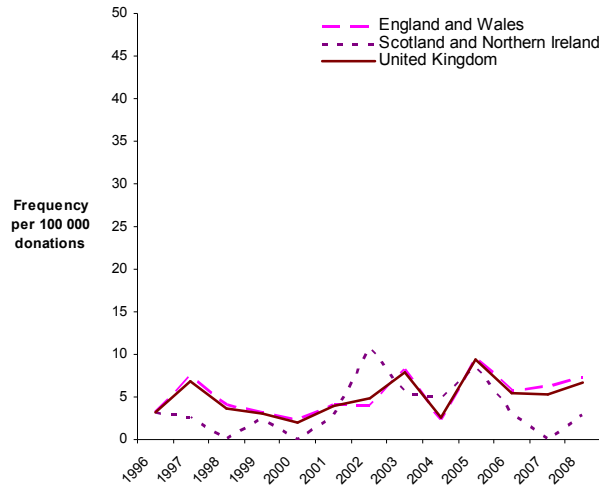
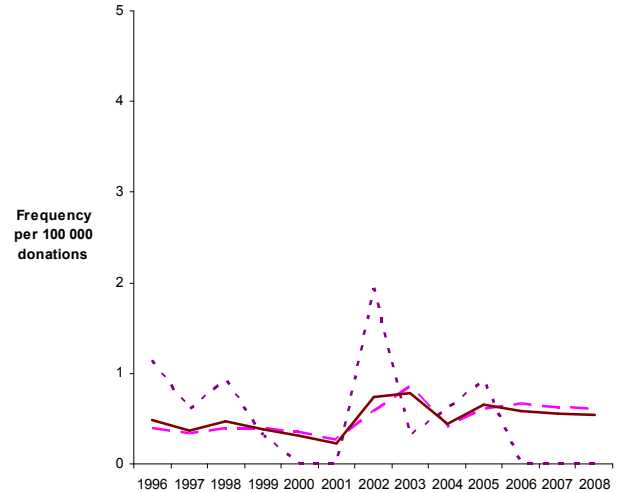


Figure 1.1-1.6 (a and b): The frequency of markers of HBV, HCV, HIV, HTLV and treponemes in blood donations from new and repeat donors collected by blood centres, UK, England and Wales, Scotland and Northern Ireland: 1996-2008. Note differences in scale for new and repeat donors, and for HCV/All Infections versus other markers.

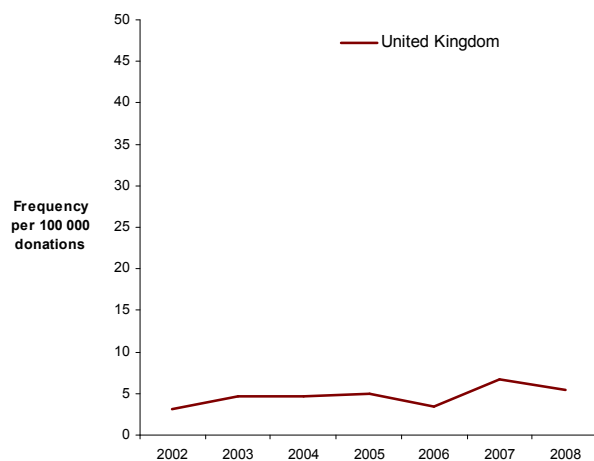
1.4a HIV - new



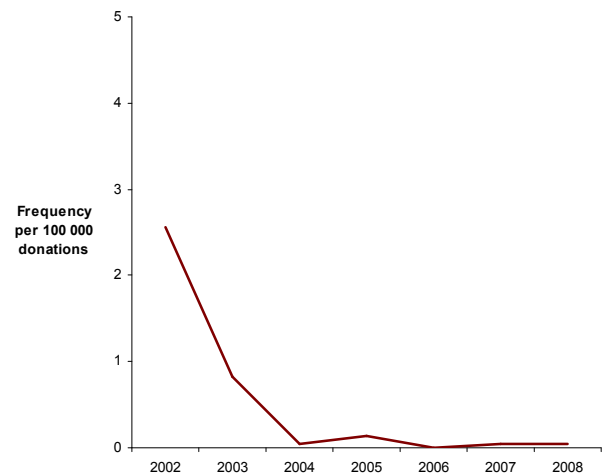
1.4b HIV - repeat



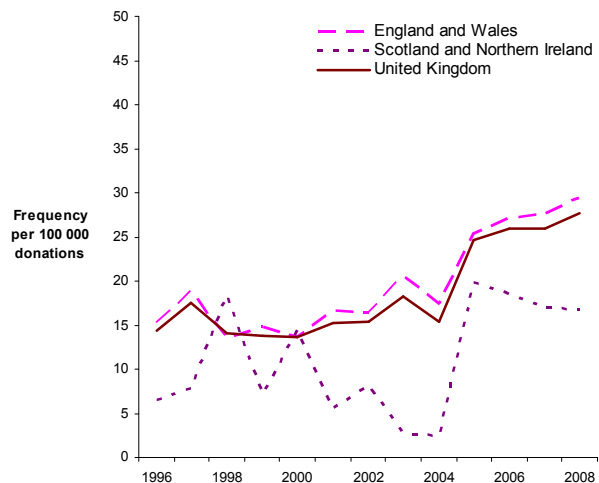
1.5a HTLV - new



1.5b HTLV - repeat



1.6a Treponemes - new



1.6b Treponemes - repeat

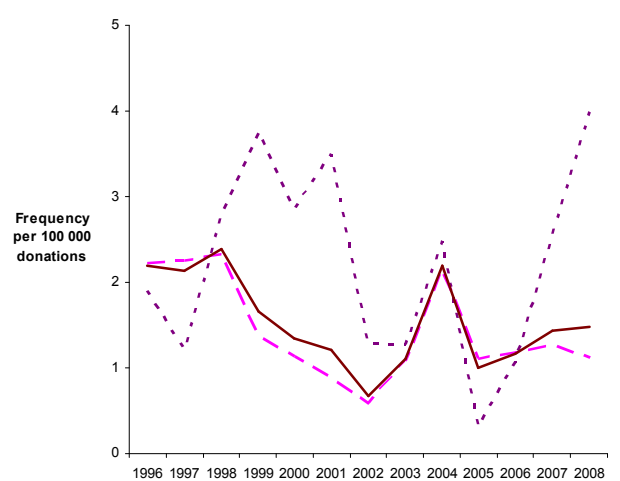


Figure 1.7: The frequency of markers of HBV in blood donations made by new and repeat donors by sex of donor, UK (excl. Scotland) and the Republic of Ireland: 1996 – 2008. Note difference in scale for new and repeat donors.

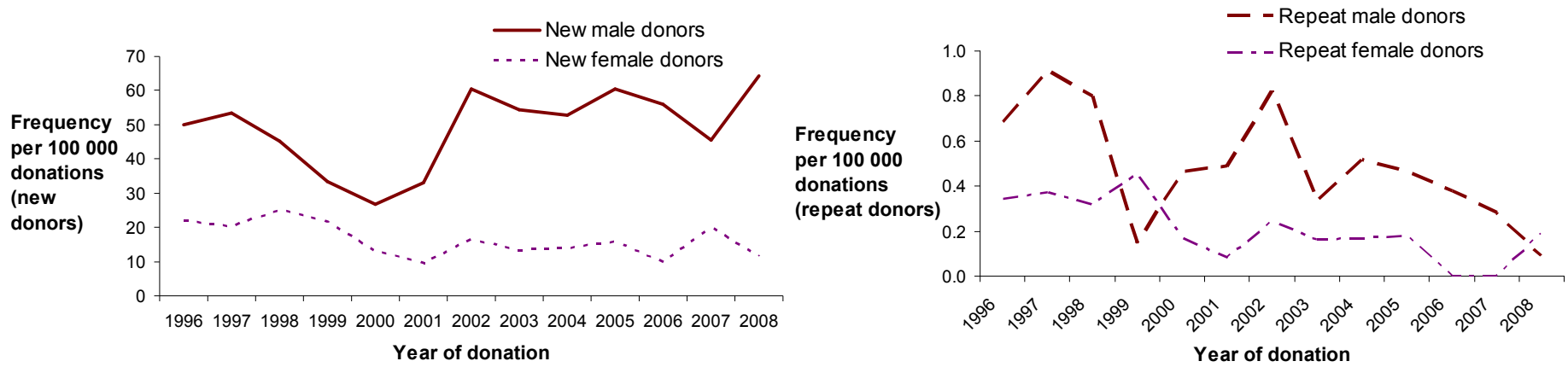


Figure 1.8: The frequency of markers of HCV in blood donations made by new and repeat donors by sex of donor, UK (excl. Scotland) and the Republic of Ireland: 1996 – 2008. Note difference in scale for new and repeat donors.

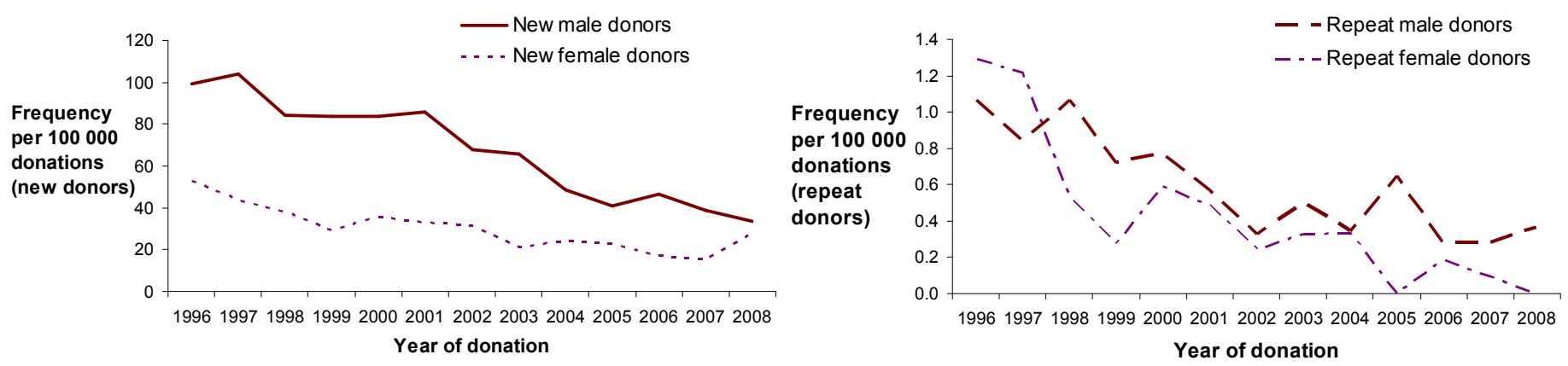


Figure 1.9: The frequency of markers of HIV in blood donations made by new and repeat donors by sex of donor, UK (excl. Scotland) and the Republic of Ireland: 1996 - 2008. Note difference in scale for new and repeat donors.

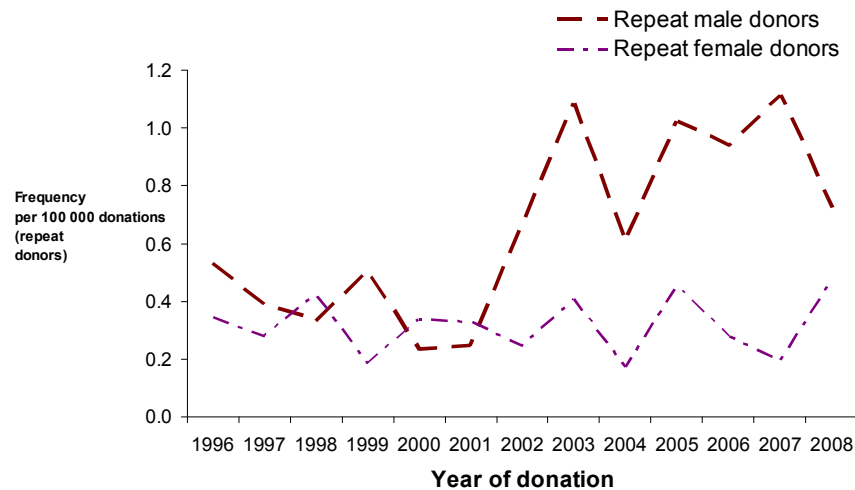
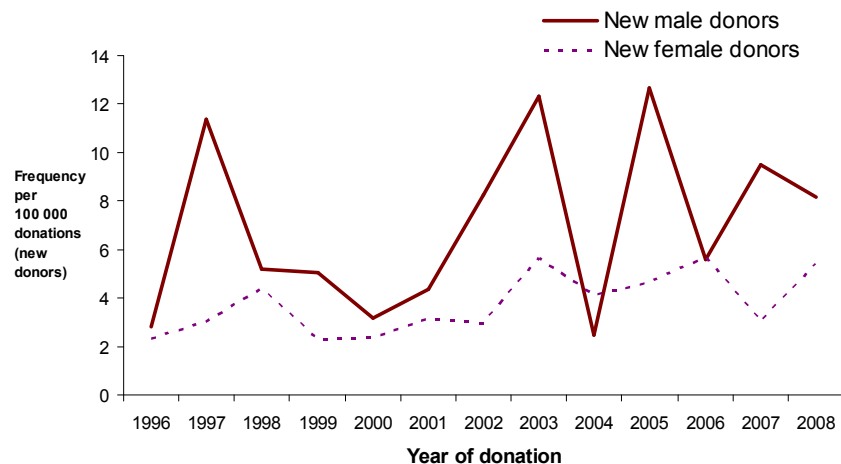


Figure 1.10: The frequency of markers of treponemes in blood donations made by new and repeat donors by sex of donor, UK (excl. Scotland) and the Republic of Ireland: 1996 - 2008. Note difference in scale for new and repeat donors.

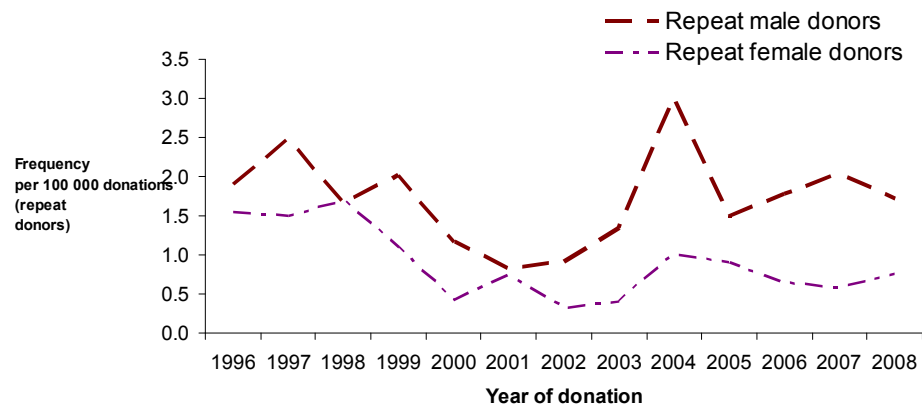
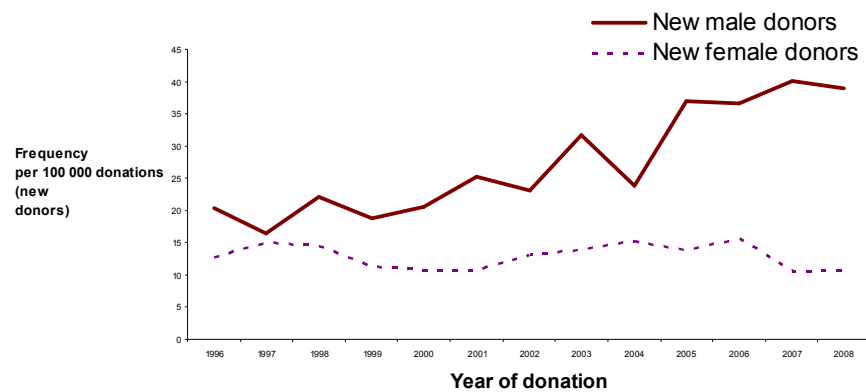
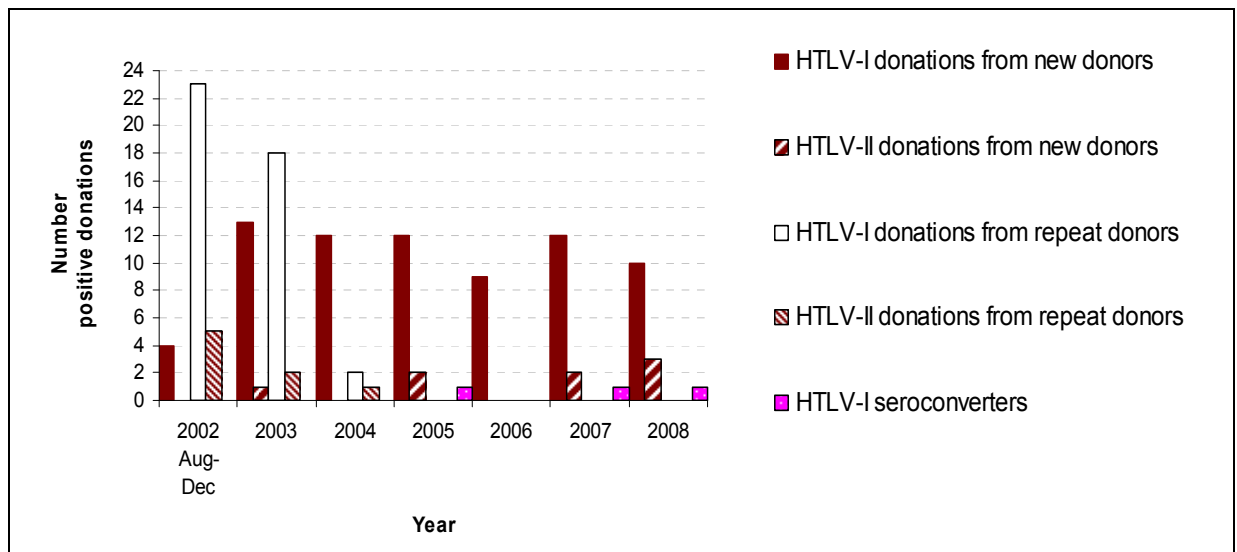


Figure 1.11: The number of anti-HTLV positive blood donations by new and repeat donors, UK (excl. Scotland) and Republic of Ireland: August 2002 – December 2008.



2. TISSUE AND CELL DONOR SURVEILLANCE

Note: Data tables for England are presented in the main Annual Report.

Table 2.1: The number (and frequency) of tissue and cell donors positive for HCV, HIV, HTLV, syphilis and HBsAg, SNBTS and NIBTS 2008

	TOTAL		HBV	HCV	HIV	HTLV	Syphilis
	Number tested	Number positive	Number positive	Number positive	Number positive	Number positive	Number positive
SNBTS¹							
Samples	2406	1	1	0	0	0	0
Donors	1,294	1	1	0	0	0	0
<i>Per 100,000 donors</i>		77.3	77.3	0.0	0.0	0.0	0.0
NIBTS							
Surgical Bone							
Samples	170	0	0	0	0	0	0
Donors ²	102	0	0	0	0	0	0
<i>Per 100,000 donors</i>		0.0	0.0	0.0	0.0	0.0	0.0
Cord Blood							
Samples	426	0	0	0	0	0	0
Donors ²	256	0	0	0	0	0	0
<i>Per 100,000 donors</i>		0.0	0.0	0.0	0.0	0.0	0.0

¹ Mainly surgical bone donors but samples from deceased, amnion and stem cell donors may also be included

² Number of donors tested estimated as 60% of all samples tested (B. Webb, personal communication)

Table 2.2: The cumulative number (and frequency) of tissue and cell donors positive for HCV, HIV, HTLV, syphilis and HBsAg, SNBTS (2005-2008) and NIBTS (2007-2008)

	TOTAL		HBV	HCV	HIV	HTLV	Syphilis
	Number tested	Number positive	Number positive	Number positive	Number positive	Number positive	Number positive
SNBTS¹							
Samples	11270	8	1	0	0	0	7
Donors	5,598	8	1	0	0	0	7
<i>Per 100,000 donors</i>		142.9	17.9	0.0	0.0	0.0	125.0
NIBTS²							
Surgical Bone							
Samples	432	2	0	1	0	0	1
Donors ³	259	2	0	1	0	0	1
<i>Per 100,000 donors</i>		771.6	0.0	385.8	0.0	0.0	385.8
Cord Blood							
Samples	1007	0	0	0	0	0	0
Donors ³	604	0	0	0	0	0	0
<i>Per 100,000 donors</i>		0.0	0.0	0.0	0.0	0.0	0.0

¹ Donors tested between 2005-2008. Mainly surgical bone donors but samples from deceased, amnion and stem cell donors may also be included

² Donors tested between 2007-2008

³ Number of donors tested estimated as 60% of all samples tested (B. Webb, personal communication)

3. TRANSFUSION TRANSMITTED INFECTIONS

Table 3.1: Cumulative total of reports of TTI's made to NHSBT/HPA Infection Surveillance Programme between 1/10/1995-31/12/2008 by year of transfusion and infection. The number of incidents is shown with the total number of identified infected recipients in brackets*

Year of transfusion Infection	Pre 1997	1997	1998	1999	2000	2001	2002	2003	2004	2005	2006	2007	2008	Total	Deaths
HAV	1 (1)	-	-	-	1 (1)	-	-	-	-	1 (1)	-	-	-	3	-
HBV	3 (3)	1 (1)	1 (1)	2 (3)	1 (1)	-	1 (1)	1 (1)	-	1 (1)	-	-	-	11	-
HCV	1 (1)	1 (1)	-	-	-	-	-	-	-	-	-	-	-	2	-
HIV	1 (3)	-	-	-	-	-	1 (1) [†]	-	-	-	-	-	-	2	-
HEV	-	-	-	-	-	-	-	-	1 (1)	-	-	-	-	1	-
HTLV I	2 (2)	-	-	-	-	-	-	-	-	-	-	-	-	2	-
Bacteria	2 (2)	3 (3)	4 (4)	4 (4)	7 (7)	5 (5)	1 (1)	3 (3)	&	2 (2)	2 (2)	3 (3)	4 (6)	40	10
Malaria	-	1 (1)	-	-	-	-	-	1 (1)	-	-	-	-	-	2	1
vCJD/prion	1 (1)	2 (2)	-	1 (1)	-	-	-	-	-	-	-	-	-	4	3 [‡]
Total	11 (13)	8 (8)	5 (5)	7 (8)	9 (9)	5 (5)	3 (3)	5 (5)	1 (1)	4 (4)	2 (2)	3 (3)	4 (6)	67	12

* This report includes data from the beginning of the NHSBT/HPA Infection Surveillance Programme in October 1995 to 31 December 2008. Data presented in the SHOT Annual Report 2008 is from October 1996 only. Therefore, the numbers shown in this table do not match those presented in the SHOT 2008 report.

[†] One investigation not included in this table. In 2003 an anti-HIV negative donation (donated in 2002) was found to be HIV RNA positive on retrospective PCR testing of a seroconverting donor. Red cells from the seronegative unit had been transfused into an elderly patient during surgery for a fractured femur in 2002. The recipient died soon after surgery and her HIV status was not determined. This case was classified as a near miss.

[&] One investigation not included in this table. In 2004 there was an incident involving contamination of a pooled platelet pack with *Staphylococcus epidermidis*, which did not meet the TTI definition because transmission to the recipient was not confirmed, but it would seem likely. This case was classified as 'not transfusion transmitted'.

[‡] A further prion case died but transfusion was NOT implicated as the cause of death.

Table 3.2: Reported transfusion transmitted bacterial contaminations by species, component type and age, UK 01/10/1995 to 31/12/2008.

	Platelets								Red cells
	Age (in days) at use								All
	1	2	3	4	5	6	NK		
All species	0	2	7	9	11	0	4	33	6
<i>Bacillus cereus</i>				4			1	5	
<i>Coagulase negative Staphylococci</i>					1			1	1 (23 days)
<i>Enterobacter aerogenes</i>			1					1	
<i>Enterobacter cloacae</i>			1					1	1 (21 days)
<i>Escherichia coli</i>		1	1				1	3	
<i>Group B Streptococcus</i>			1	1			1	3	
<i>Group G Streptococcus</i>				1	1			2	
<i>Klebsiella pneumoniae</i>			2					2	
<i>Morganella morganii</i>					1			1	
<i>Pseudomonas putida</i>									1 (17 days)
<i>Serratia liquifaciens</i>									1 (21 days)
<i>Staphylococcus aureus</i>				1	1		1	3	
<i>Staphylococcus epidermidis</i>		1		2	7	1*		10	1 (32 days)
<i>Streptococcus bovis</i>			1					1	
<i>Yersinia enterocolitica</i>									1 (33 days)

Unit was part of a shelf-life extension study

Figure 3.1: Reports of possible TTI's made to the NHSBT/HPA Infection Surveillance Programme, UK 01/10/1995 to 31/12/2008 (Scotland included from October 1998).

